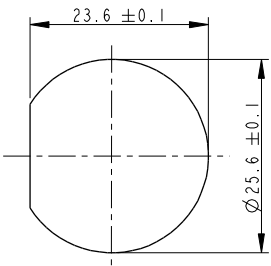
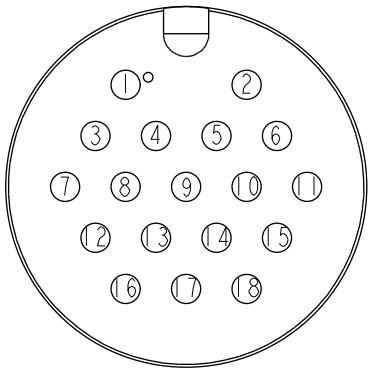
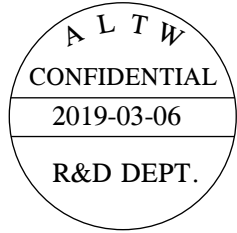
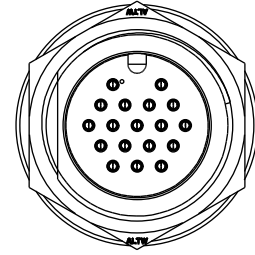
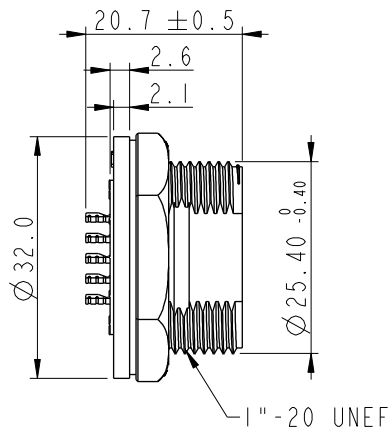
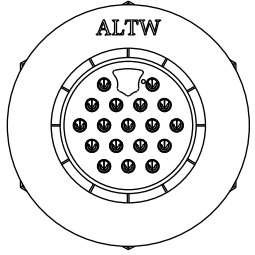


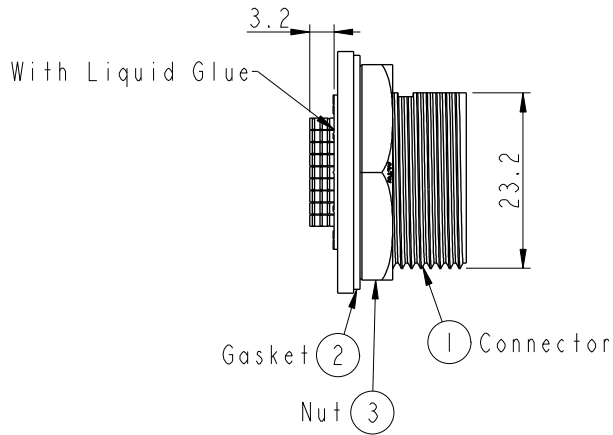
REV.	ECN NO.	DATE	SIGN	DESCRIPTION
B	C190347	2019/03/06	Vicky	Change Note



Recommended Panel Cut-Out



Pin Assignments Front View



- Note:**
- * CC Important Dimension To Check.
 - * Waterproof Rate: IP67, Unmated.
 - * Housing: Thermoplastic, Black.
 - * Pin: Copper Alloy, Gold Plated.
 - * Gasket: Rubber, Gray.
 - * Nut: Thermoplastic, Black.
 - * Use with waterproof cap or dust cap
Maximum Panel Thickness: 1.8mm
 - * Use without waterproof cap or dust cap
Maximum Panel Thickness: 3.0mm
 - * Gasket and Nut are packed separately in PE bags. (Gasket/Nut不組裝, 散裝出貨)

A	UNIT:mm	TITLE LARGE PANEL SCREW 18PIN M CONN M PIN			ITEM NO ADD-18PMMS-SC7001	DRAWN BY Vicky	DATE 2019-03-06
	TOLERANCE .X ±0.25 .XX ±0.1 .XXX ±0.05 ANGLES ±1°	SCALE 2:1	SIZE A4	SHEET 1 OF 1	DWG NO ADD-18PMMS-SC7001	CHECKED BY Rita	DATE 2019-03-06
	REV. B	WC-REV. A.1	CC : Inspection item		CUSTOMER ALTW	APPROVED BY Max	DATE 2019-03-06
	Amphenol LTW 安費諾亮泰企業股份有限公司				W10814-03-01A2		

THIS DOCUMENT IS SUBJECT TO CHANGE WITHOUT NOTICE. IT IS CONFIDENTIAL AND A PROPERTY OF Amphenol LTW. DISCLOSURE TO THIRD PARTY HAS TO BE AUTHORIZED BY Amphenol LTW.