

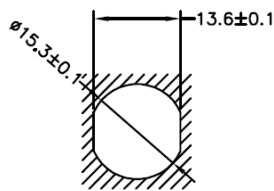
### AI-T00212

(Receptacle, M12 Rear Mount, 12-Position Female Straight-Open, PG9 Threads, 24 AWG, 0.5M)

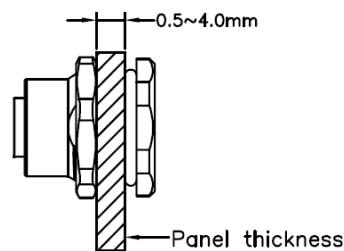


Pin Out

J1	COLOR	J2
1	WHITE	OPEN
2	BROWN	
3	GREEN	
4	YELLOW	
5	GRAY	
6	PINK	
7	BLUE	
8	RED	
9	ORANGE	
10	LIGHT GREEN	
11	BLACK	
12	VIOLET	

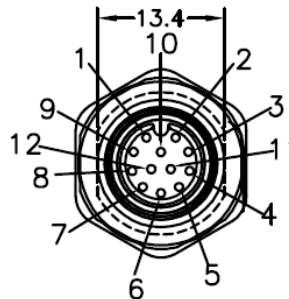


Panel hole size



Panel thickness

J1



- Mueller's AI-T00212 is a cable assembly that has a 12-position rear mount M12 Female receptacle to open end, 24 AWG, 0.5 meters.
- Shell size for connector: M12 (A Coding)
- Cable Material: 24AWG Hook Up Wire
  - Overall length = 1.64' (0.5M)
- Shell: 18x18mm PG9 threaded rear mount
  - Material: Nickel Plated Brass
- Rating:
  - Voltage: 30V AC/DC
  - Current: 1.5 Amps
  - Ambient Temperature: -40°C to 85°C
- Standard: IEC 61076-2-101
- Waterproof: IP67/IP68
- RoHS 3 Compliant