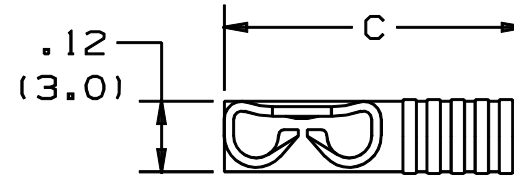


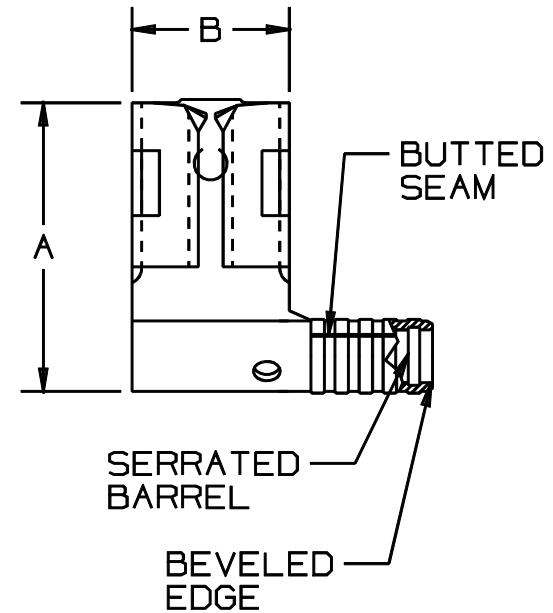
THIS COPY IS PROVIDED ON A RESTRICTED BASIS AND IS NOT TO BE USED IN ANY WAY DETRIMENTAL TO THE INTERESTS OF PANDUIT CORP.

PART NUMBER	TAB SIZE	WIRE RANGE AWG	DIMENSIONS in.		
			A $\pm .02$	B $\pm .01$	C $\pm .02$
DR18-205B	OR .205 X .032 .187 X .032	22-18	.53 (13.5)	.25 (6.4)	.54 (13.7)
DR14-205B	OR .205 X .032 .187 X .032	16-14	.55 (14.0)	.25 (6.4)	.54 (13.7)
DR18-206B	OR .205 X .020 .187 X .020	22-18	.53 (13.5)	.25 (6.4)	.54 (13.7)
DR14-206B	OR .205 X .020 .187 X .020	16-14	.55 (14.0)	.25 (6.4)	.54 (13.7)



NOTES:

- USED FOR:
  - A. 302° F (150° C) MAX. TEMP. RATING
  - B. STRANDED COPPER WIRE ONLY
- MATERIAL:
  - A. STAMPING - .018" (0.46) THK BRASS, TIN PLATED
- PACKAGE QTY: STD. PKG. - C = 100  
BULK PKG. - M = 1000
- FIRST INSERTION FORCE - 12 LB. (53N) MAX  
FIRST WITHDRAWAL FORCE - 12 LB. (53N) MAX  
6 LB. (27N) MIN
- DIMENSIONS IN BRACKETS ARE IN MILLIMETERS
- INSTALLATION TOOLS:  
CT-100 (POCKET B)  
CT-200, CT-1570
- WIRE STRIP LENGTH: 9/32  $\pm .0032$  (7.1  $\pm .08$ )



CERTIFIED  
LR31212

(DR18-205B & DR18-206B ONLY)

A41327\_05

5	1/01	RM		FILESPEC WAS N41327AA_PCD_04							TINLEY PARK, ILLINOIS		
4	4-98	ED		ADDED SLOTS	06755								
-	-	-	-	FILESPEC WAS: A41327A_03						NON-INSULATED, BUTTED SEAM RIGHT ANGLE FEMALE DISCONNECT .205B/.206B SERIES			
3	12-95	ED RLS		REVISION TO NOTES	03836	LA	TFK						
REV	DATE	BY	CHK	DESCRIPTION	ECN	QA	CUST	PM	APP	DRAWN BY DAW	CHK'D CJH	SCALE NONE	DRAWING NO. A41327