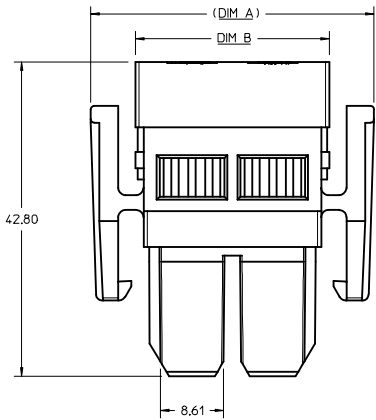
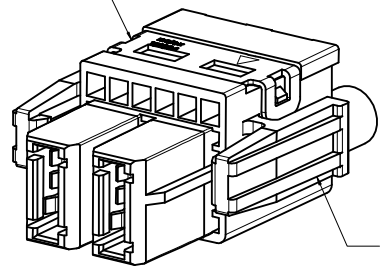


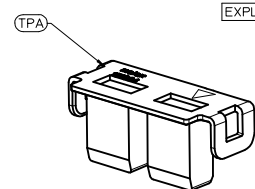
CKT SIZE	PART NUMBER			DM A	DM B	DM C
	WTB MAIN HOUSING	TPA	6 AWG POWER TERMINAL			
2	151034-0012	151034-0022	46819-0013 (2X)	38.60	26.40	24.20
3	151034-0013	151034-0023	46819-0013 (3X)	49.60	37.40	35.20
4	151034-0014	151034-0024	46819-0013 (4X)	60.60	48.40	46.20
5	151034-0015	151034-0025	46819-0013 (5X)	71.60	59.40	57.20
6	151034-0016	151034-0026	46819-0013 (6X)	82.60	70.40	68.20



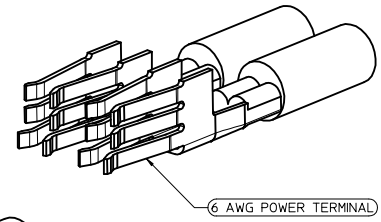
TPA
PART NO: 151034-002*



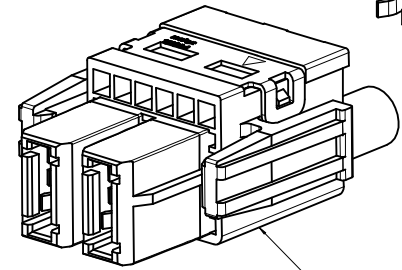
WTB MAIN HOUSING
PART NO: 151034-001*



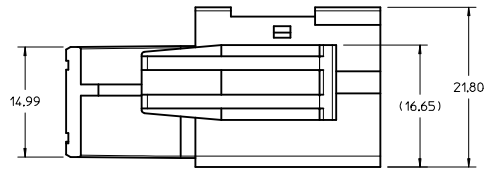
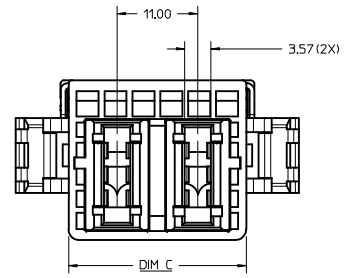
EXPLODED VIEW OF WIRE HARNESS



6 AWG POWER TERMINAL



WTB MAIN HOUSING



NOTES:

- MATERIAL:
MAIN HOUSING AND TPA: PBT
CRIMP TERMINAL: COPPER ALLOY
- FINSIHES: TIN OVER NICKEL WITH SELECTIVE GOLD
- PRODUCT SPEC: PS-151053-0000
- PACKAGNG: BAG
- TO BE USED WITH CRIMP PART NUMBER: 46819-0013
MOLEX DRAWING SD-46819-001. CABLE ASSEMBLIES: TBA.
- PARTS ARE RoHS COMPLIANT.
- TPA MUST BE USED WITH HOUSING.
- DO NOT INSERT TPA INTO MAIN HOUSING UNTIL THE CRIMP WITH WIRES HAD BEEN INSERTED.
- FOR WIRE SIZE: 6AWG.

THIS DESIGN IS BASED ON DESIGN OBJECTIVES AND IS STRICTLY TENTATIVE. IT MAY CHANGE BASED ON RESULTS OF ADDITIONAL DESIGN REVIEWS & VERIFICATIONS.

REVISED PER IEC NO: S2015-0037 2014/09/25 DRWNG:CGH 2014/10/07 CHKD:KANG 2014/11/24 APPR:KHLIM	QUALITY SYMBOLS ∇=0 ∇=0 ∇=0	GENERAL TOLERANCES (UNLESS SPECIFIED) DIMENSION STYLE MM ONLY	DIMENSION STYLE SCALE 3:1	DESIGN UNITS METRIC	THIRD ANGLE PROJECTION
		4 PLACES ± mm ± INCH 3 PLACES ± --- ± --- 2 PLACES ± 0.25 ± --- 1 PLACE ± --- ± --- 0 PLACE ± --- ± ---	DRAWN BY CGOH DATE 2014/04/23	CHECKED BY DATE	APPROVED BY KHLIM DATE 2014/11/24
DRAFT WHERE APPLICABLE MUST REMAIN WITHIN DIMENSIONS		SIZE D		SHEET NO. 1 OF 1	

GUARDIAN II
CRIMP RECEPTACLE HOUSING
2 - 6 CKTS
molex