

4

3

2

1


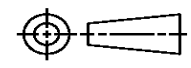
THIS DRAWING IS UNPUBLISHED. RELEASED FOR PUBLICATION  
© COPYRIGHT ALL RIGHTS RESERVED.

LOC		DIST		REVISIONS			
P	LTR	DESCRIPTION		DATE	DWN	APVD	
	D1	ECR-15-009637		25JUN2015	GK	HMR	

# REPLACED BY OCEAN STYLE APPLICATOR PART NUMBER 2266766-2

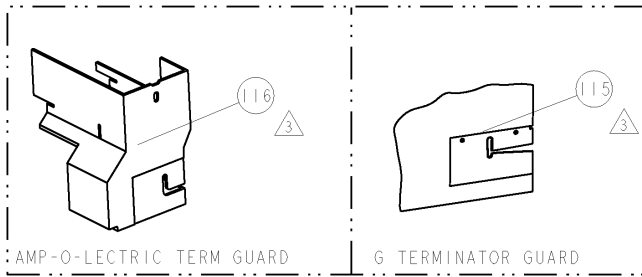
FOR REPLACEMENT PARTS FOR APPLICATOR 1852610 REFER TO ADDITIONAL PAGE(S). SPARE PARTS KIT (IF LISTED) WILL REMAIN AVAILABLE.

THE REPLACEMENT OCEAN STYLE APPLICATOR HAS THE SAME TERMINATOR/PRESS INTERFACE AS APPLICATOR 1852610

THIS DRAWING IS A CONTROLLED DOCUMENT.		DWN	GOPALAKRISHNA HV			TE Connectivity			
DIMENSIONS:		CHK	RAGHAVENDRA			NAME			
		TOLERANCES UNLESS OTHERWISE SPECIFIED:		APVD	SIDE FEED HDM APPLICATOR				
		0 PLC ±	1 PLC ±	RAGHAVENDRA		PRODUCT SPEC			
MATERIAL		2 PLC ±	3 PLC ±	APPLICATION SPEC		SIZE	CAGE CODE	DRAWING NO	RESTRICTED TO
FINISH		4 PLC ±	ANGLES ±	WEIGHT		A3		©- 1852610	
				CUSTOMER DRAWING		SCALE	SHEET 1 OF 2	REV D1	

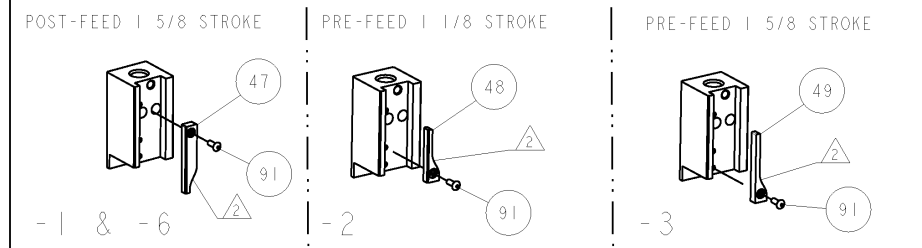
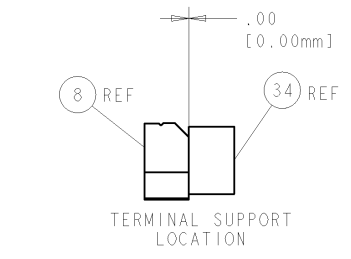
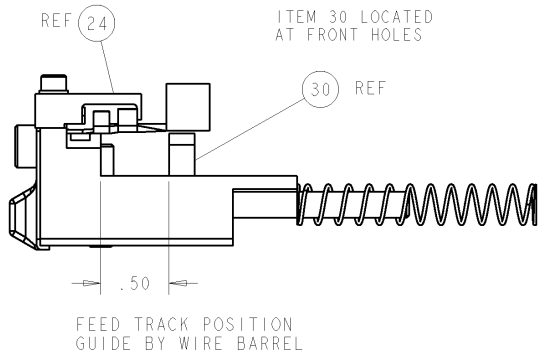
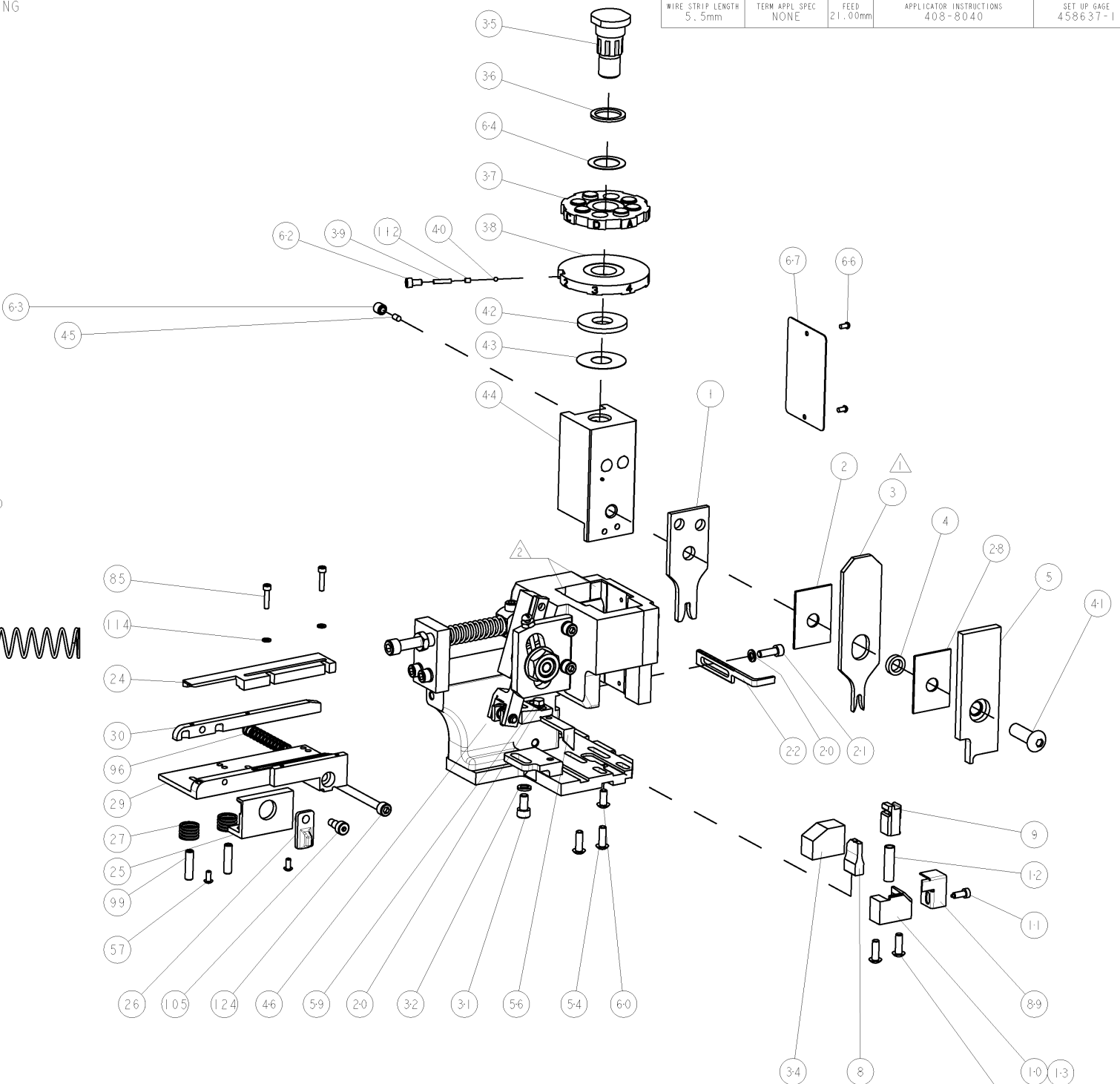
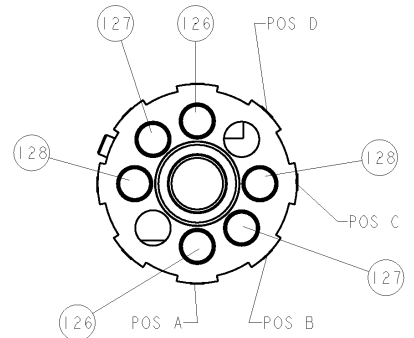
PART NUMBER	REV	FIRST USED	POWER UNIT	FEED TYPE	DESCRIPTION
1852610-1	D	122500-1	LEADMAKER	POST FEED	CUTS CARRIER
1852610-2	D	565435-5	BENCH MODEL K	PRE FEED	CUTS CARRIER
1852610-3	D	354500-1	BENCH MODEL G	PRE FEED	CUTS CARRIER
1852610-6	D	122500-1	LEADMAKER	POST FEED	CONTINUOUS CARRIER
7-1852610-7	B	-	-	-	SPARE PARTS

- △ RECOMMENDED SPARE PARTS
- △ GREASE LIGHTLY
- △ GUARD MUST BE IN PLACE WHEN OPERATING APPLICATOR IN A BENCH MACHINE



TERMINAL NAME: RING TONGUE		TE TERMINAL - TE CRIMP SPECS	
SOCKET	-		
1599300	-		
		PAD LTR	CRIMP HEIGHT
		A	2.35±0.05mm[0.093±0.002]
		B	2.24±0.05mm[0.088±0.002]
		C	2.18±0.05mm[0.086±0.002]
		D	-
		CRIMP	SIZE
		WIRE	3.30mm[0.130]
		INSUL	3.30mm[0.130]
		FEED	21.00mm
		TYPE	F
		RANGE	0.75-1.30mm2
WIRE STRIP LENGTH	5.5mm	TERM APPL SPEC	NONE
		APPLICATOR INSTRUCTIONS	408-8040
		SET UP GAGE	458637-1

REV	DATE	BY	CHKD	DESCRIPTION
B	07FEB2008	MEH	TE	ECR-08-003477
C	14MAY2009	MY	GB	ECR-08-012513
D	03AUG2011	RS	SX	ECR-11-015997



REV	DATE	BY	CHKD	DESCRIPTION	ITEM NO		
-	2	2	2	2	6-354778-1	PIN, WIRE DISC., .2800	128
-	2	2	2	2	5-354778-7	PIN, WIRE DISC., .2780	127
-	2	2	2	2	4-354779-7	PIN, WIRE DISC., .3225	126
-	1	1	1	1	8-21000-7	SCR, SKT HD CAP 10-32 X 2.500	124
-	-	-	REF	-	455749-1	GUARD WINDOW	116
-	-	REF	-	-	679532-1	INSERT, GUARD	115
-	-	-	2	-	21024-2	WASHER, SPRG LOCK, REG NO 4	114
-	1	1	1	1	690603-1	SPRING ASSIST AMP-O-MATOR APPLICATOR	112
-	-	-	1	-	21989-8	SCR, SKT HD SHLDR 3/16 DIA X .250	105
-	2	2	2	2	5-21006-6	SCR, SET, CUP POINT 10-32 X .750	99
-	1	1	1	1	1-22281-8	SPRING, COMPRESSION	96
-	1	1	1	1	1-21002-7	SCR, BTN SKT HD CAP 6-32 X .375	91
-	1	1	1	1	318563-1	GUARD, FRONT CHIP	89
-	2	2	2	2	1-21000-5	SCR, SKT HD CAP 4-40 X .500	85
-	1	1	1	1	4088040	SF APPL INST 408-8040	72
-	1	1	1	1	217238-1	GENERAL INSTRUCTION PKG	71
-	1	1	1	1	461264-1	PLATE, IDENTIFICATION	67
-	2	2	2	2	21017-2	SCREW, DRIVE	66
-	1	1	1	1	986950-1	WASHER, FLAT PRECISION	64
-	1	1	1	1	21009-2	SCR, SET, SELF LOCKING 1/4-20 X .250	63
-	1	1	1	1	23030-1	SCR, SKT HD CAP 6-32 X .25	62
-	1	1	1	1	22733-8	SCR, BHSC, SELF-LOCKING, 8-32 X .375	60
-	1	1	1	1	2-22603-0	SCR, HEX HD CAP 8-32 X .312	59
-	2	2	2	2	1-21002-3	SCR, BTN SKT HD CAP 4-40 X .250	57
-	1	1	1	1	458537-4	PAWL, FEED	56
-	4	4	4	4	2-21002-2	SCR, BTN SKT HD CAP 8-32 X .500	54
-	-	-	-	-	690602-6	CAM, PRE FEED, 1 5/8	49
-	-	-	-	-	690602-5	CAM, PRE FEED, 1 1/8	48
-	1	1	1	1	690501-4	CAM, POST-FEED 1 5/8	47
-	1	1	1	1	459456-1	APPL, BASIC SUB ASSY (SIDE WISE MQCA)	46
-	1	1	1	1	690191-1	PLUG, NYLON	45
-	1	1	1	1	455673-1	RAM, SIDE FEED	44
-	1	1	1	1	690125-1	SHIM SUB-ASSY	43
-	1	1	1	1	690124-1	WASHER, RAM (.115)	42
-	1	1	1	1	7-21002-9	SCR, SKT HD CAP 5/16-24 X 1.00	41
-	1	1	1	1	23241-6	BALL, STEEL	40
-	1	1	1	1	690170-1	SPRING, COMPRESSION	39
-	1	1	1	1	690142-1	DISC, INSULATION	38
-	1	1	1	1	354777-1	WIRE DISC, ASSEMBLY	37
-	1	1	1	1	22480-5	SPRING, COMPRESSION	36
-	1	1	1	1	690212-1	POST, RAM	35
-	1	1	1	1	2-690786-3	TERMINAL SUPPORT	34
-	1	1	1	1	21024-5	WASHER, SPRG LOCK, REG NO 10	32
-	1	1	1	1	3-21000-4	SCR, SKT HD CAP 10-32 X .375	31
-	1	1	1	1	189807-9	FENCE	30
-	1	1	1	1	1633087-3	PLATE, STRIP GUIDE	29
-	1	1	1	1	1-455888-0	SPACER, CRIMPER	28
-	2	2	2	2	1-22284-0	SPRING, COMPRESSION	27
-	1	1	1	1	356835-1	LEVER, DRAG RELEASE	26
-	1	1	1	1	240792-1	DRAG, TERMINAL	25
-	1	1	1	1	3-679651-3	FRONT STRIP GUIDE	24
-	1	1	1	1	690472-2	STRIPPER	22
-	1	1	1	1	2-21000-7	SCR, SKT HD CAP 8-32 X .500	21
-	2	2	2	2	21024-4	WASHER, SPRG LOCK, REG NO 8	20
-	1	1	1	1	679625-1	SHEAR HOLDER, FRONT (NO CUT)	13
-	1	1	1	1	3-22280-3	SPRING, COMPRESSION	12
-	1	1	1	1	1-690461-7	STOP, SHEAR	11
-	-	-	-	-	690459-1	SHEAR HOLDER, FRONT	10
-	1	1	1	1	454276-1	FLOATING SHEAR, FRONT	9
-	1	1	1	1	1633114-7	ANVIL, COMBINATION .130	8
-	-	-	-	-	-	-	7
-	-	-	-	-	-	-	6
-	1	1	1	1	2-455889-0	DEPRESSOR, SHEAR	5
-	1	1	1	1	238011-2	BLOCK, CRIMPER SPACER	4
-	1	1	1	1	1-456135-6	CRIMPER, INSULATION O PREMIUM	3
-	1	1	1	1	1-455888-1	SPACER, CRIMPER	2
-	1	1	1	1	3-456410-7	CRIMPER, WIRE PREMIUM	1

DIMENSIONS:		TOLERANCES UNLESS OTHERWISE SPECIFIED:		DRAWING NO: 1852610	
INCHES:		MILLIMETERS:		DATE: 07DEC2007	
0 PLC	± .001	0.15	± .001	DRAWN BY: DEMING	
1 PLC	± .001	0.25	± .001	CHECKED BY: HERR	
2 PLC	± .001	0.50	± .001	APPROVED BY: BAO	
3 PLC	± .001	1.00	± .001	PART NO: 1852610	
4 PLC	± .001	2.00	± .001	DESCRIPTION: SIDE FEED HDM APPLICATOR	
MATERIAL:		FINISH:		SCALE: 3:5	
WEIGHT:		CUSTOMER DRAWING:		SHEET 1 OF 2	