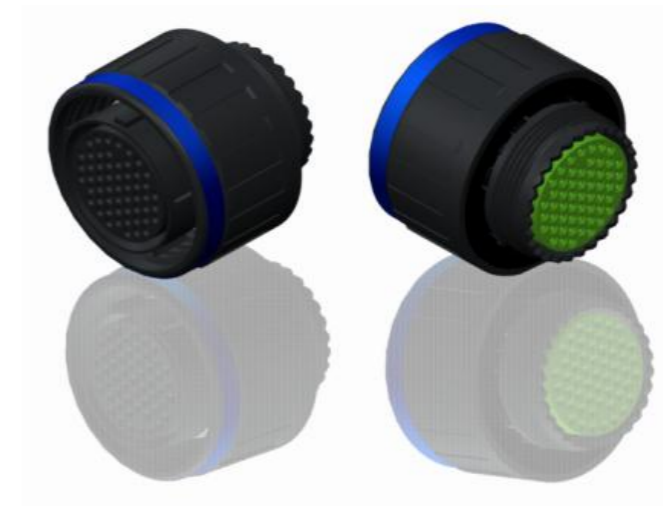
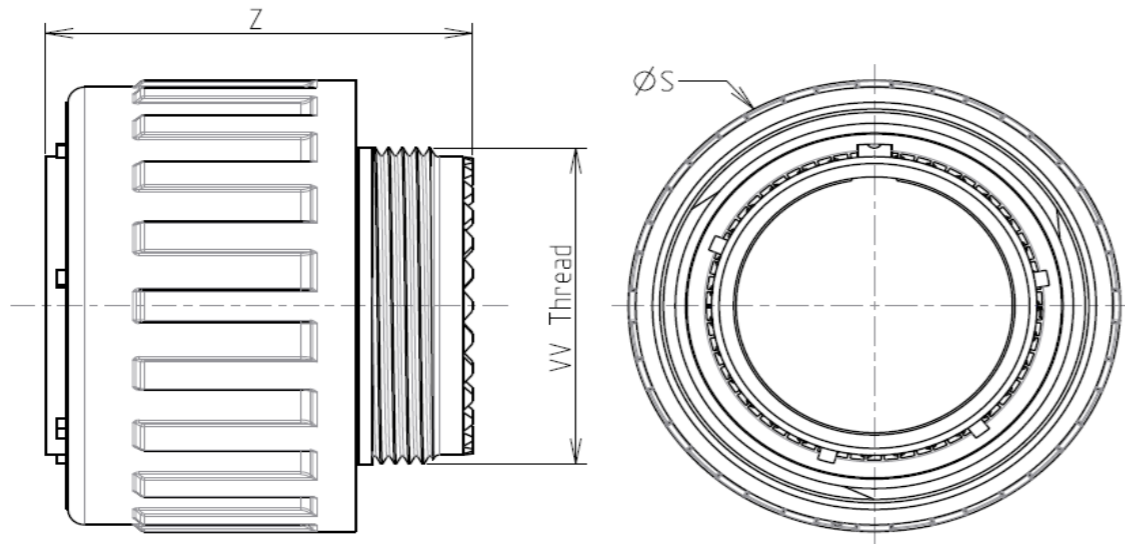


H G F E D C B A

4
3
2
1

4
3
2
1



LAYOUT SHOWN AS EXAMPLE

Keying Shown as example

CHARACTERISTICS

- Standard : Based on MIL-DTL-38999 Series III
- Shell Material : Composite
- Shell Plating : Without Plating
- Insulator : Thermoplastic
- Contacts : Copper Alloy
- Seals & Grommet : Silicon Elastomer
- Contact Plating : Gold over copper Alloy 0.8µm minimum
- Durability : 500 Mating cycles
- Delivered without Souriau contacts
- Temperature Range : -65°C to +175°C
- Salt Spray : 2000 hours

| Connector dimension | |
|---------------------|----------|
| Dim | Nominal |
| ØS | 38.5 Max |
| Z | 31 Max |
| VV THREAD | M28x1-6g |

SOURIAU shall not be liable for any non-conformity or damage due to a use of the Products which does not comply with the Specifications issued by either of the Parties or by a third party (professional recommendation, technical notice.)

| Country | Jurisdiction & Control List |
|---------|-----------------------------|
| FR | Not Listed |

PN: 8D519X28SEL

| | | | |
|--------------|------------|--------------------------|-------------------------|
| A | 19-10-2016 | First Release | |
| ISS | DATE | Latest modification - by | MOD N° |
| Designed By: | | Date: | CUSTOMER DRAWING |

TITLE Composite Plug 8D series

| | | | |
|-------|--|--------------------------------|-----------------|
| SCALE | | General linear Tolerances: ±-- | NPRDS / PROJECT |
| NA | | | 859 |

SOURIAU WWW.SOURIAU.COM

This document is the property of SOURIAU it must not be reproduced or communicated without permission

| | | | |
|-----------|-------------------------------------|--|------------|
| FORMAT | SOURIAU DRG N° 8D519X28SEL-C | | SHEET |
| A3 | | | 1/2 |

| | | | | | | | | | | |
|----------------|-------------------------|---|---|----|---|------------------------------------|---|---|---|------------------------|
| BASIC SERIES: | 8D | 5 | - | 19 | X | 28 | S | E | L | Delivered W/O Contacts |
| SHELL TYPE : | Plug with RFI Shielding | | | | | ORIENTATION : E | | | | |
| CONTACT TYPE : | Standard Crimp Contact | | | | | CONTACT TYPE : SOCKET(500 Matings) | | | | |
| SHELL SIZE : | 19 | | | | | CONTACT LAYOUT : 19-28 | | | | |
| PLATING : | X = Without Plating | | | | | | | | | |

H G F E D C B A

