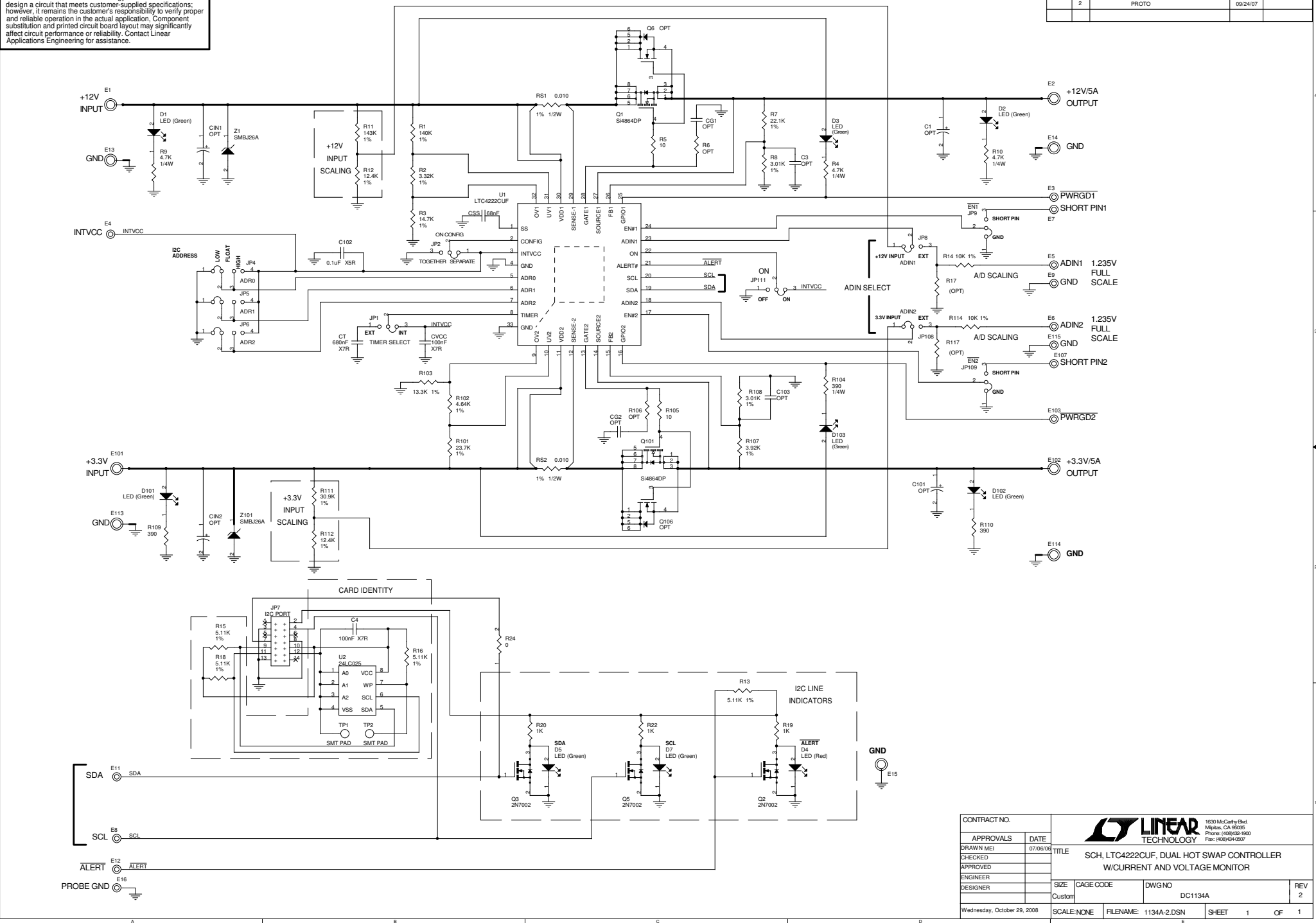


REVISION HISTORY				
ECO	REV	DESCRIPTION	DATE	APPROVED
	2	PROTO	09/24/07	

This circuit is proprietary to Linear Technology and supplied for use with Linear Technology parts.
Customer Notice: Linear Technology has made a best effort to design a circuit that meets customer-supplied specifications; however, it remains the customer's responsibility to verify proper and reliable operation in the actual application. Component substitution and printed circuit board layout may significantly affect circuit performance or reliability. Contact Linear Applications Engineering for assistance.



CONTRACT NO.		LINEAR TECHNOLOGY		1620 McCarty Blvd. Milpitas, CA 95035 Phone: (408)632-1000 Fax: (408)634-0907	
APPROVALS	DATE	TITLE: SCH, LTC4222CUF, DUAL HOT SWAP CONTROLLER W/CURRENT AND VOLTAGE MONITOR			
DRAWN MEI	07/06/06	ENGINEER	DESIGNER	SIZE: CAGE CODE	DWG NO: DC1134A
CHECKED		DESIGNER		Customer	REV 2
APPROVED		SCALE: NONE	FILENAME: 1134A-2.DSN	SHEET 1	OF 1
Wednesday, October 29, 2008					