



# Product Change Notification (PCN)

PCN Number	510732	Date Issued	October 07, 2021
Reason for Change	Capacity change or tool replacement		
Change Type Description	This letter is to inform you that another set of tooling is being added to meet the current and future demands of this product. There will be no changes in the fit, form or function from the additional tooling when compared to the current tooling.		
Reason for Short Notice	New Capacity		
Assessment of Change	Passed FAI		
Internal Molex Qualification Date	November 10, 2021		
Sample Availability Date (Changed Part)	November 10, 2021		
Planned Implementation Date	November 12, 2021		
Method of Identifying Change	Product made after planned implementation date can contain the change		

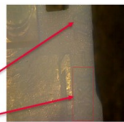
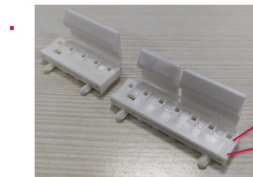
RELEASED

## Before Change

### KK 156 Header - BEFORE

#### Mold:

- For 42492 series headers cavity # visible is #1A to # 8A



Cavity # 1A to 8A

Factory code JXI

#### Assembly:

- 41791 , 42491 , 42891 , 171813 , 41792 , 42492 , 42892 Series parts are produced from the existing 4 assembly machines

## After Change

### KK 156 Header - AFTER

- On increased demand in KK 156 Header, new capacity mold and assembly machine is getting added.
  - Wafers will be supplied from any of 1 existing mold or 1 new mold after the implementation date.
  - Headers will be supplied from any of 4 existing machines or 1 new machine after the implementation date
- Product Impact
  - No Impact on Fit, Form or Function.
  - In Mold cavity #1A to #16A will be visible.
- Part Number Impact
  - Refer the attached list.
- Qualification Reports and samples. available upon request after the date shown above





## Product Change Notification (PCN)

---

You may address any technical inquiries regarding this PCN by sending E-mail to [pcn\\_coordinator@molex.com](mailto:pcn_coordinator@molex.com) or your Local Sales Engineer.

Note: While responding, please retain "**PCN Notification:510732**" in the e-mail Subject line for faster response.

RELEASED

**Molex, LLC**  
2222 Wellington Court  
Lisle, IL 60532  
TEL: 630-969-4747  
[www.molex.com](http://www.molex.com)

PCN #	Molex Part #
510732	26604020
510732	26604030
510732	26604040
510732	26604050
510732	26604060
510732	26604080
510732	26604100
510732	26604120
510732	26604140
510732	26604160
510732	26604180
510732	26605020
510732	26605030
510732	26605040
510732	26605050
510732	26605060
510732	26605080
510732	26607040
510732	26614020
510732	26614030
510732	26614040
510732	26614050
510732	26614060
510732	26614070
510732	26614080
510732	26614100
510732	26615030
510732	26615040
510732	26615050
510732	26615100
510732	26624030
510732	26624040
510732	26645020
510732	26645040
510732	417910833
510732	417910840
510732	417910850
510732	1718130002
510732	1718130003
510732	1718130004
510732	1718130006
510732	1718130008
510732	1718131004
510732	1718131006
510732	1718133002

510732 1718133003

510732 1718133006

510732 1718140005

510732 1718140007

510732 1718144004

PCN #	Customer Material #
510732	26-60-4020
510732	26-60-4050
510732	26-60-4060
510732	26-60-4070
510732	26-60-4080
510732	26-60-4090
510732	26-60-4100
510732	26-60-4110
510732	26-60-4120
510732	26-60-4150
510732	26-60-4160
510732	26-60-5030
510732	26-60-5060
510732	26-60-5070
510732	26-60-5090
510732	26-60-7030
510732	26-60-7050
510732	26-61-4020
510732	26-61-4030
510732	26-61-4040
510732	26-61-4090
510732	26-61-4110
510732	26-61-4120
510732	26-61-4150
510732	26-61-5020
510732	26-61-5050
510732	26-61-5060
510732	26-61-5070
510732	26-61-5080
510732	26-61-5090
510732	26-62-4051
510732	26-62-7082
510732	26-64-4020
510732	26-64-4030
510732	26-64-4040
510732	26-64-4050
510732	26-64-4080
510732	26-64-4090
510732	26-64-4120
510732	26-64-5060
510732	26-64-5080
510732	27-62-4069
510732	50-29-1907
510732	50-29-1908
510732	41791-0834

510732	41791-0840
510732	41791-0985
510732	42491-0388
510732	171813-3003
510732	171813-3004
510732	171813-3006
510732	171814-0006
510732	26604020
510732	26604030
510732	26604040
510732	26604043
510732	26604060
510732	26604100
510732	26604130
510732	26605020
510732	26605030
510732	26605040
510732	26605060
510732	26605070
510732	26605080
510732	26606020
510732	26606050
510732	26614020
510732	26614040
510732	26614080
510732	26615060
510732	26624030
510732	26644070
510732	1718130002
510732	1718130003
510732	1718130006