

Han 24E-M-Screw Fe(Au) / CuNi Type J

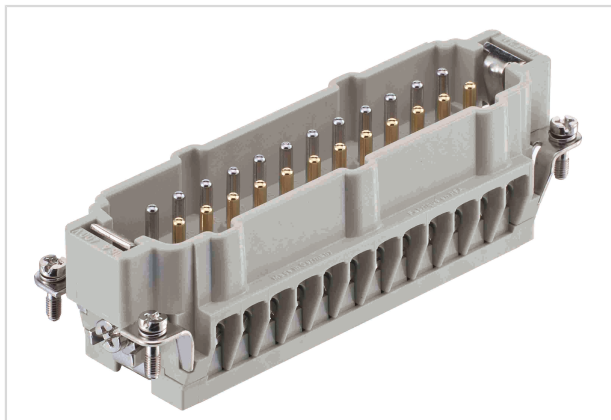


Image is for illustration purposes only. Please refer to product description.

Part number	09 33 024 2691
Specification	Han 24E-M-Screw Fe(Au) / CuNi Type J
HARTING eCatalogue	https://b2b.harting.com/09330242691

Identification

Category	Inserts
Series	Han [®] Thermocouple
Identification	Han E [®]

Version

Termination method	Screw termination
Gender	Male
Size	24 B
With wire protection	Yes
Number of contacts	24
PE contact	Yes

Technical characteristics

Conductor cross-section	1 ... 2.5 mm ²
Rated current	16 A
Rated voltage	400 V
Rated impulse voltage	6 kV
Pollution degree	3
Insulation resistance	>10 ¹⁰ Ω
Tightening torque	0.5 Nm
Limiting temperature	-40 ... +125 °C
Mating cycles	≥500



Pushing Performance

Material properties

Material (insert)	Polycarbonate (PC)
Colour (insert)	RAL 7032 (pebble grey)
Material flammability class acc. to UL 94	V-0
RoHS	compliant with exemption
RoHS exemptions	6(c): Copper alloy containing up to 4 % lead by weight
ELV status	compliant with exemption
China RoHS	50
REACH Annex XVII substances	No
REACH ANNEX XIV substances	No
REACH SVHC substances	Yes
REACH SVHC substances	Lead
ECHA SCIP number	5dbb3851-b94e-4e88-97a1-571845975242
California Proposition 65 substances	Yes
California Proposition 65 substances	Nickel Lead

Specifications and approvals

Specifications	EN 60664-1 IEC 61984
Approvals	DNV GL

Commercial data

Packaging size	1
Net weight	34.6 g
Country of origin	Germany
European customs tariff number	85366990
eCl@ss	27440205 Contact insert for industrial connectors