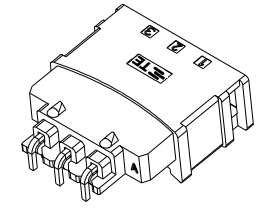
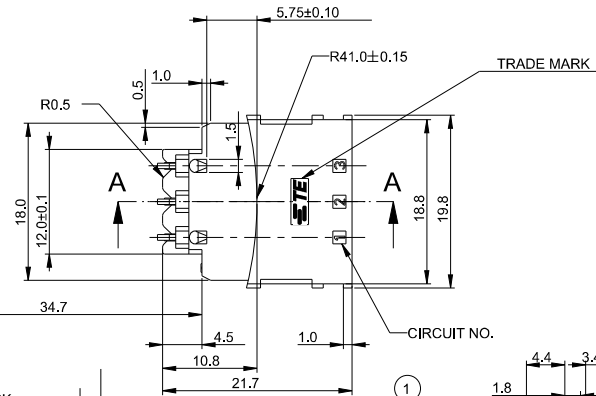
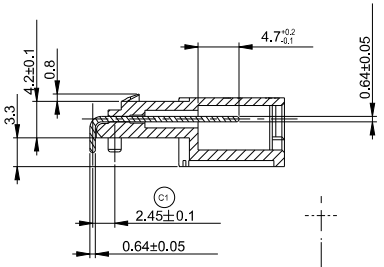
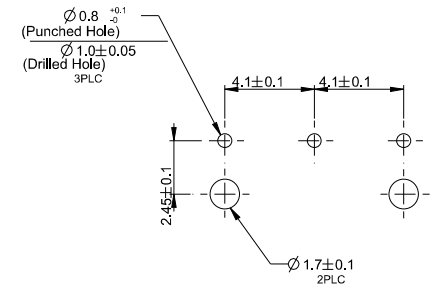
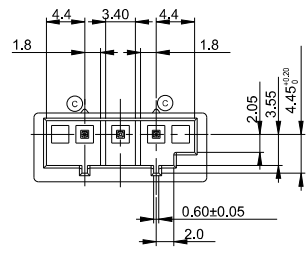
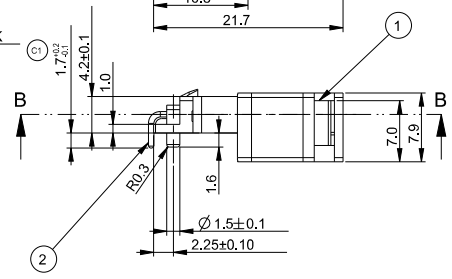
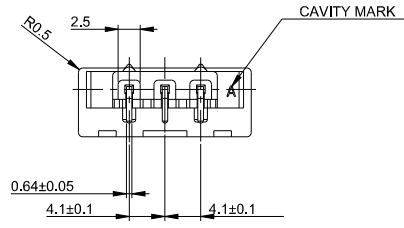


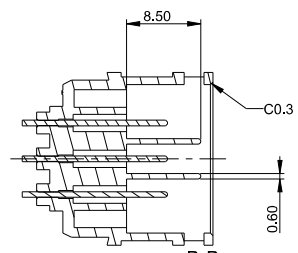
LOG	DIST	REVISIONS			
P	LTR	DESCRIPTION	DATE	DWN	APVD
C1		REVISED(ECR-17-000610)	23JAN2017	BH	BW
C2		REVISED(ECR-17-013217)	08SEP2017	BH	RP
C3		REVISED PER ECR-20-100359	21AUG2020	BDA	XD



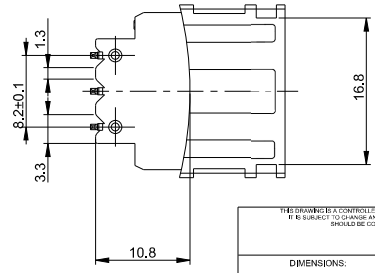
SECTION A-A
SCALE 2:1



NOTES
1. GENERAL TOLERANCES : ±0.25



SECTION B-B
SCALE 2:1



②	POST CONTACT	BRASS	-	1743490-1
①	HDR HSG	6/6 NYLON	NATURAL	
ITEM	DESCRIPTION	MATERIAL	COLOR	P/N

DIMENSIONS:		TOLERANCES UNLESS OTHERWISE SPECIFIED:		DWN		TE Connectivity	
mm		0 PLC	±	BH CHO	23JAN2017	TE TE Connectivity	
		1 PLC	±0.1	CHK	-		
MATERIAL		2 PLC	±0.01	APVD	-	NAME	
SEE NOTES		3 PLC	±0.001	PRODUCT SPEC	BW KANG	BLOWER MOTOR 3P HDR ASS'Y	
		4 PLC	±0.0001	APPLICATION SPEC	-	SIZE	CAGE CODE
		ANGLES	±	FINISH	-	A3	00779
						DRAWING NO	RESTRICTED TO
						C=1743490	-
						WEIGHT	CUSTOMER DRAWING
						SCALE	2:1
						SHEET	1 OF 1
						REV	C3