

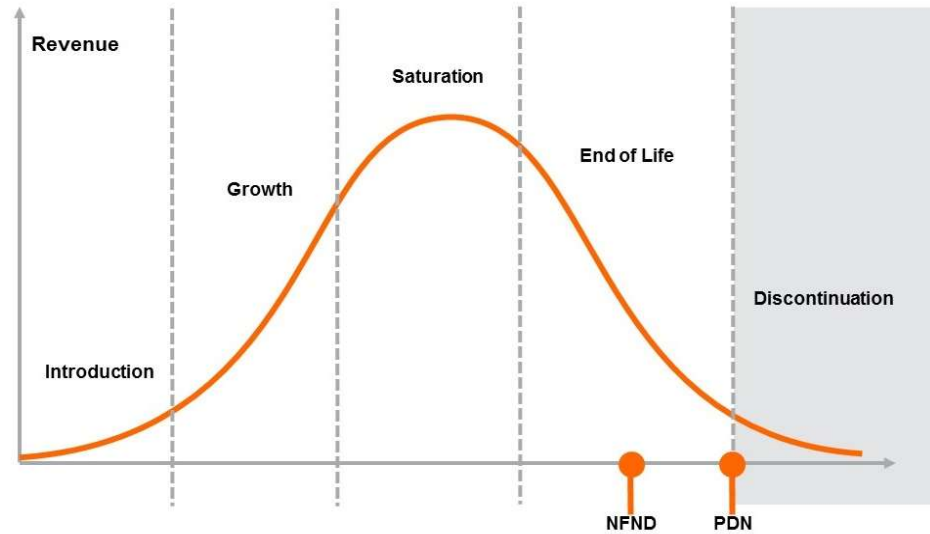
Light is OSRAM

Product Or Individual Q-Code Discontinuation (acc. JEDEC J-STD-048)

02 November 2020

**OS-PDN-2020-062**

Last order:	03 May 2020
Last delivery:	03 November 2021



Please direct your feedback to your local Sales office.

DISCONTINUED				NEW (REPLACEMENT)		
Device	Ordering Code	Brand	Reason for discontinuation	Device	Datasheet Ordering Code	Brand
LB G6SP-V2BB-35-1-140-R18-Z	Q65110A4678	Advanced Power TOPLED	Brightness increase – dim selections need to be phased-out	LB G6SP-BACB-35-47-140-R18-Z	Q65111A8888	Advanced Power TOPLED
LW T6SG-V2BA-JKPL-0-20-R18-ZI	Q65110A8982	TOPLED	Upgraded successor product available	LW T6SG-V2BA-JKPL-0-20-R18	Q65113A1044	TOPLED
LW A6SG-V2BA-JKPL-0-20-R33-ZI	Q65110A8994	SIDELED	Upgraded successor product available	LW A6SG-V2BA-JKPL-0-20-R33	Q65113A1201	SIDELED
LCW G6CP-DBEA-6U8W-0-140-R18-LM	Q65111A0052	Advanced Power TOPLED	Brightness increase – dim selections need to be phased-out	LCW G6CP-DBFA-4U9X-0-140-R18-Z	Q65112A9758	Advanced Power TOPLED
LT E6SG-AABB-35-1-30-R18-Z	Q65111A0322	Power TOPLED	Upgraded successor product available	LT E6SG-AABB-36-U686-30-S	Q65113A1343	Power TOPLED
LCW G6CP-DBEA-6U8X-0-140-R18-Z-JC	Q65111A0340	Advanced Power TOPLED	Brightness increase – dim selections need to be phased-out	LCW G6CP-DBFA-4U9X-0-140-R18-Z	Q65112A9758	Advanced Power TOPLED
LCB E6SG-V2AB-4R6T-0-30-R18-Z	Q65111A1110	Power TOPLED	Upgraded successor product available	LCB E6SG-V2AB-4R6T-0-30-R18	Q65113A1055	Power TOPLED
LW A6SG-V2AA-NPK-0-20-R33-ZI	Q65111A1400	SIDELED	Brightness increase – dim selections need to be phased-out	LW A6SG-V2BA-FKOPN0-0-20-R33	Q65113A1198	SIDELED
LB TTSD-R1T2-25-1-20-R18-Z	Q65111A1639	TOPLED	Upgraded successor product available	LB TTSD-S1T2-25-35-20-S	Q65113A0874	TOPLED
LCB A6SG-V2AB-6H7J-0-20-R33-ZV	Q65111A3015	SIDELED	No sufficient future volume forecast	LCB A6SG-V1AB-2J8L-0-20-R33	Q65113A1199	SIDELED
LB G6SP-ABBB-35-1-140-R18-Z-DL	Q65111A3636	Advanced Power TOPLED	Brightness increase – dim selections need to be phased-out	LB G6SP-BACB-35-47-140-R18-Z	Q65111A8888	Advanced Power TOPLED
LCW G6CP-DBEA-6R7T-0-140-R18-XX	Q65111A4041	Advanced Power TOPLED	Brightness increase – dim selections need to be phased-out	LCW G6CP-EAFB-4L8N-0-140-R18-Z	Q65112A9760	Advanced Power TOPLED
KW DPLS31.SB-5H5J-E5P7-EG-1-120-R18-XX	Q65111A4558	SYNOS	No sufficient future volume forecast	KW DPLS31.SB-5H5J-E5P7-QV-1-120-S	Q65112A7340	SYNOS
LW T6SG-V1AA-FKKL-0-20-R18-ZI	Q65111A4889	TOPLED	Upgraded successor product available	LW T6SG-V2AB-FKKL-0-20-R18	Q65113A1046	TOPLED
LCB A6SG-V1AB-2J8L-0-20-R33-Z	Q65111A5188	SIDELED	Upgraded successor product available	LCB A6SG-V1AB-2J8L-0-20-R33	Q65113A1199	SIDELED
LCB E6SG-AABB-2J8L-0-30-R18-Z	Q65111A5195	Power TOPLED	Upgraded successor product available	LCB E6SG-AABB-2J8L-0-30-R18	Q65113A1056	Power TOPLED
LB TTSD-P2Q2-35-1-5-R18-Z	Q65111A5715	TOPLED	Upgraded successor product available	LB TTSD-P2Q2-35-34-5-S	Q65113A0875	TOPLED
LCW G6CP-DBEA-6S7T-0-140-R18-XX	Q65111A5723	Advanced Power TOPLED	Brightness increase – dim selections need to be phased-out	LCW G6CP-EAFB-4L8N-0-140-R18-Z	Q65112A9760	Advanced Power TOPLED
KW DPLS31.SB-7H8H-G5J5-EF-1-120-R18-XX	Q65111A6864	SYNOS	No sufficient future volume forecast	KW DPLS31.SB-5H5J-E5P7-QV-1-120-S	Q65112A7340	SYNOS
LUW CEUP.CE-6M7M-HNUN-1-700-R18-Z	Q65111A7245	OSLON	No sufficient future volume forecast	LUW CEUP.CE-5M6N-HNUN-8E8G-700-S	Q65112A3912	OSLON
KW DPLS31.SB-7H8H-H5L6-FG-1-120-R18-S-XX	Q65111A7570	SYNOS	No sufficient future volume forecast	KW DPLS31.SB-5H5J-E5P7-QV-1-120-S	Q65112A7340	SYNOS
KW DPLS31.SB-6H5J-J5M6-FG-1-120-R18-XX	Q65111A7726	SYNOS	No sufficient future volume forecast	KW DPLS31.SB-5H5J-E5P7-QV-1-120-S	Q65112A7340	SYNOS
KW DPLS31.SB-7H5J-E5I6-F-1-120-R18-T-XX	Q65111A7944	SYNOS	No sufficient future volume forecast	KW DPLS31.SB-5H5J-E5P7-QV-1-120-S	Q65112A7340	SYNOS
KW DPLS31.SB-7H5J-G5J6-F-1-120-R18-XX	Q65111A8876	SYNOS	No sufficient future volume forecast	KW DPLS31.SB-5H5J-E5P7-QV-1-120-S	Q65112A7340	SYNOS
LUW CEUP.CE-7M6N-IN-1-700-R18-Z-ZKW	Q65111A8958	OSLON	No sufficient future volume forecast	LUW CEUP.CE-5M6N-HNUN-8E8G-700-S	Q65112A3912	OSLON
KW DPLS31.SB-7H5J-IL6-EG-1-120-R18-XX	Q65111A9038	SYNOS	No sufficient future volume forecast	KW DPLS31.SB-5H5J-E5P7-QV-1-120-S	Q65112A7340	SYNOS
KW DPLS31.SB-8H6J-E5H7-EG-1-120-R18-XX	Q65111A9181	SYNOS	No sufficient future volume forecast	KW DPLS31.SB-5H5J-E5P7-QV-1-120-S	Q65112A7340	SYNOS
KW DPLS31.SB-7H5J-K6L7-EG-1-120-R18-T-YA	Q65111A9778	SYNOS	No sufficient future volume forecast	KW DPLS31.SB-5H5J-E5P7-QV-1-120-S	Q65112A7340	SYNOS
KW DPLS31.SB-7H5J-F6J7-EG-1-120-R18-XX	Q65111A9780	SYNOS	No sufficient future volume forecast	KW DPLS31.SB-5H5J-E5P7-QV-1-120-S	Q65112A7340	SYNOS
LUW CEUP.CE-M77M-fcbB46-1-700-R18-Z-HAN	Q65111A9815	OSLON	No sufficient future volume forecast	LUW CEUP.CE-5M6N-HNUN-8E8G-700-S	Q65112A3912	OSLON
LT TTSD-U1V2-36-W6G6-10-R18-Z	Q65112A0124	TOPLED	Upgraded successor product available	LT TTSD-U1V2-36-S446-10-S	Q65113A0864	TOPLED
KW DPLS31.SB-7H8H-H5J6-EG-1-120-R18-XX	Q65112A0750	SYNOS	No sufficient future volume forecast	KW DPLS31.SB-5H5J-E5P7-QV-1-120-S	Q65112A7340	SYNOS
KW DPLS31.SB-7H5J-E5G6-FG-1-120-R18-XX	Q65112A0829	SYNOS	No sufficient future volume forecast	KW DPLS31.SB-5H5J-E5P7-QV-1-120-S	Q65112A7340	SYNOS
KW DPLS31.SB-7H5J-F6H7-EG-1-120-R18-XX	Q65112A1188	SYNOS	No sufficient future volume forecast	KW DPLS31.SB-5H5J-E5P7-QV-1-120-S	Q65112A7340	SYNOS

DISCONTINUED				NEW (REPLACEMENT)		
Device	Ordering Code	Brand	Reason for discontinuation	Device	Datasheet Ordering Code	Brand
LW A6SG-V2BA-FK0PN0-0-20-R33-Z	Q65112A1366	SIDELED	Upgraded successor product available	LW A6SG-V2BA-FK0PN0-0-20-R33	Q65113A1198	SIDELED
LW TTSD-R2T1-FK0PN0-W266-5-R18-Z	Q65112A1379	TOPLED	Upgraded successor product available	LW TTSD-R2T1-FK0PN0-W266-5-R18	Q65113A1043	TOPLED
LW TTSD-U1V2-FK0PN0-36-20-R18-Z	Q65112A1381	TOPLED	Upgraded successor product available	LW TTSD-U1V2-FK0PN0-35-20-S	Q65113A0873	TOPLED
LW T6SG-V1BA-FK0PN0-0-20-R18-Z	Q65112A1382	TOPLED	Upgraded successor product available	LW T6SG-V1BA-FK0PN0-0-20-R18	Q65113A1045	TOPLED
LW A6SG-V2BB-FK1NN1-0-20-R33-Z-XX	Q65112A1407	SIDELED	No sufficient future volume forecast	LW A6SG-V2BA-FK0PN0-0-20-R33	Q65113A1198	SIDELED
LW A6SG-V2BB-FK2NM2-0-20-R33-Z-XX	Q65112A1420	SIDELED	No sufficient future volume forecast	LW A6SG-V2BA-FK0PN0-0-20-R33	Q65113A1198	SIDELED
LW A6SG-V2BB-FK3PM3-0-20-R33-Z-XX	Q65112A1470	SIDELED	No sufficient future volume forecast	LW A6SG-V2BA-FK0PN0-0-20-R33	Q65113A1198	SIDELED
KW DPLS31.SB-7H5J-E6H7-EG-1-120-R18-XX	Q65112A1550	SYNIOS	No sufficient future volume forecast	KW DPLS31.SB-5H5J-E5P7-QV-1-120-S	Q65112A7340	SYNIOS
LUW CEUP.HD-5N7N-U2-8E8F-1000-R18-Z-B	Q65112A1589	OSLON	No sufficient future volume forecast	LUW CEUP.CE-5M6N-HN3N-8E8G-700-S	Q65112A3912	OSLON
LW M673-K1N1-FK3PM3-0-2-R18-Z-XX	Q65112A1593	Mini TOPLED	Upgraded successor product available	LW M673-K2N1-FK0PN0-U626-2-R18-Z	Q65112A1365	Mini TOPLED
LW E6SG-AABB-JKPL-46-30-R18-Z	Q65112A2036	Power TOPLED	Upgraded successor product available	LW E6SG-AABB-JKPL-46-30-R18	Q65113A1054	Power TOPLED
LUW CEUP.CE-6M7M-IN-1-700-R18-Z-HAN	Q65112A2130	OSLON	No sufficient future volume forecast	LUW CEUP.CE-5M6N-HN3N-8E8G-700-S	Q65112A3912	OSLON
KW DPLS31.SB-7H5J-E6I5-EG-1-120-R18-T-XX	Q65112A2404	SYNIOS	No sufficient future volume forecast	KW DPLS31.SB-5H5J-E5P7-QV-1-120-S	Q65112A7340	SYNIOS
LB E6SG-T2V1-35-46-30-R18-Z	Q65112A2449	Power TOPLED	Upgraded successor product available	LB E6SG-T2V1-35-46-30-R18	Q65113A1394	Power TOPLED
LS G6SP-DBEA-1-3A4B-140-R18-Z-XX	Q65112A2561	Advanced Power TOPLED	No sufficient future volume forecast	LS G6SP-CADB-1-1-140-R18-Z	Q65111A1078	Advanced Power TOPLED
KW DPLS31.SB-7H5J-M6P7-EG-1-120-R18-PA	Q65112A3180	SYNIOS	No sufficient future volume forecast	KW DPLS31.SB-5H5J-E5P7-QV-1-120-S	Q65112A7340	SYNIOS
LB G6SP-BB-35-1-140-R18-Z-XX	Q65112A3427	Advanced Power TOPLED	Brightness increase – dim selections need to be phased-out	LB G6SP-BACB-35-47-140-R18-Z	Q65111A8888	Advanced Power TOPLED
KT DELQS1.12-TIVH-36-S4A6-10-S	Q65112A4762	TOPLED	Upgraded successor product available	KT DELQS1.12-TIVH-36-S446-10-S	Q65113A0865	TOPLED
KW DPLS31.SB-7H5J-K5M6-EG-1-120-R18-BSH	Q65112A5370	SYNIOS	No sufficient future volume forecast	KW DPLS31.SB-5H5J-E5P7-QV-1-120-S	Q65112A7340	SYNIOS
LS G6SP-DBEA-1-3A4B-140-R18-Z-OL	Q65112A6369	Advanced Power TOPLED	No sufficient future volume forecast	LS G6SP-CADB-1-1-140-R18-Z	Q65111A1078	Advanced Power TOPLED
KW HKL531.TE-8Q7R-ebvF46cbB46-4LZL-KO	Q65112A6893	OSLON	No sufficient future volume forecast	KW HKL531.TE-F0F8-ebvF46cbB46-4LZL-A00-S	Q65112A8333	OSLON
LA E67F-CBDB-24-1-50-R18-Z-BAY	Q65112A8210	Power TOPLED	No sufficient future volume forecast	LA E67F-BADB-24-3A5A-50-R18	Q65112A9414	Power TOPLED
LW ETSG-ABCA-JKPL-1-30-R18-Z	Q65112A9743	Power TOPLED	Upgraded successor product available	LW ETSG-ABCA-JKPL-46-30-R18	Q65113A1053	Power TOPLED
LUW CEUN.CE-6L-HN-8E8G-350-R18-ZW-LEA	Q65113A0506	OSLON	No sufficient future volume forecast	LUW CEUN.CE-7K7L-HN3N-1-350-S	Q65112A9412	OSLON
KW CELMM1.TG-X3X8-5L06L0-2464-350-R18-HE	Q65113A1139	OSLON	No sufficient future volume forecast	KW CELMM1.TG-S3SA-ebvF46cbB46-8F8H-A50-S	Q65112A9875	OSLON
LUW CEUP.CE-7M-IN-8E8G-700-R18-ZKW	Q65113A2088	OSLON	No sufficient future volume forecast	LUW CEUP.CE-5M6N-HN3N-8E8G-700-S	Q65112A3912	OSLON

QNbrDesc_Discont	QNbr_Discont	LTB Date	LTD Date	QNbrDesc_Replace	QNbr_Replace
LB G6SP-V2BB-35-1-140-R18-Z	Q65110A4678	03-May-20	03-Nov-21	LB G6SP-BACB-35-47-140-R18-Z	Q65111A8888
LW T6SG-V2BA-JKPL-0-20-R18-ZI	Q65110A8982	03-May-20	03-Nov-21	LW T6SG-V2BA-JKPL-0-20-R18	Q65113A1044
LW A6SG-V2BA-JKPL-0-20-R33-ZI	Q65110A8994	03-May-20	03-Nov-21	LW A6SG-V2BA-JKPL-0-20-R33	Q65113A1201
LCW G6CP-DBEA-6U8W-0-140-R18-LM	Q65111A0052	03-May-20	03-Nov-21	LCW G6CP-DBFA-4U9X-0-140-R18-Z	Q65112A9758
LT E6SG-AABB-35-1-30-R18-Z	Q65111A0322	03-May-20	03-Nov-21	LT E6SG-AABB-36-U686-30-S	Q65113A1343
LCW G6CP-DBEA-6U8X-0-140-R18-Z-JC	Q65111A0340	03-May-20	03-Nov-21	LCW G6CP-DBFA-4U9X-0-140-R18-Z	Q65112A9758
LCB E6SG-V2AB-4R6T-0-30-R18-Z	Q65111A1110	03-May-20	03-Nov-21	LCB E6SG-V2AB-4R6T-0-30-R18	Q65113A1055
LW A6SG-V2AA-NPK-0-20-R33-ZI	Q65111A1400	03-May-20	03-Nov-21	LW A6SG-V2BA-FKOPNO-0-20-R33	Q65113A1198
LB TTSD-R1T2-25-1-20-R18-Z	Q65111A1639	03-May-20	03-Nov-21	LB TTSD-S1T2-25-35-20-S	Q65113A0874
LCB A6SG-V2AB-6H7J-0-20-R33-ZV	Q65111A3015	03-May-20	03-Nov-21	LCB A6SG-V1AB-2J8L-0-20-R33	Q65113A1199
LB G6SP-ABBB-35-1-140-R18-Z-DL	Q65111A3636	03-May-20	03-Nov-21	LB G6SP-BACB-35-47-140-R18-Z	Q65111A8888
LCW G6CP-DBEA-6R7T-0-140-R18-XX	Q65111A4041	03-May-20	03-Nov-21	LCW G6CP-EAFB-4L8N-0-140-R18-Z	Q65112A9760
KW DPLS31.SB-5H5J-E5P7-EG-1-120-R18-XX	Q65111A4558	03-May-20	03-Nov-21	KW DPLS31.SB-5H5J-E5P7-QV-1-120-S	Q65112A7340
LW T6SG-V1AA-FKKL-0-20-R18-ZI	Q65111A4889	03-May-20	03-Nov-21	LW T6SG-V2AB-FKKL-0-20-R18	Q65113A1046
LCB A6SG-V1AB-2J8L-0-20-R33-Z	Q65111A5188	03-May-20	03-Nov-21	LCB A6SG-V1AB-2J8L-0-20-R33	Q65113A1199
LCB E6SG-AABB-2J8L-0-30-R18-Z	Q65111A5195	03-May-20	03-Nov-21	LCB E6SG-AABB-2J8L-0-30-R18	Q65113A1056
LB TTSD-P2Q2-35-1-5-R18-Z	Q65111A5715	03-May-20	03-Nov-21	LB TTSD-P2Q2-35-34-5-S	Q65113A0875
LCW G6CP-DBEA-6S7T-0-140-R18-XX	Q65111A5723	03-May-20	03-Nov-21	LCW G6CP-EAFB-4L8N-0-140-R18-Z	Q65112A9760
KW DPLS31.SB-7H8H-G5J5-EF-1-120-R18-XX	Q65111A6864	03-May-20	03-Nov-21	KW DPLS31.SB-5H5J-E5P7-QV-1-120-S	Q65112A7340
LUW CEUP.CE-6M7M-HNJJN-1-700-R18-Z	Q65111A7245	03-May-20	03-Nov-21	LUW CEUP.CE-5M6N-HNJJN-8E8G-700-S	Q65112A3912
KW DPLS31.SB-7H8H-H5L6-FG-1-120-R18-S-XX	Q65111A7570	03-May-20	03-Nov-21	KW DPLS31.SB-5H5J-E5P7-QV-1-120-S	Q65112A7340
KW DPLS31.SB-6H5J-J5M6-FG-1-120-R18-XX	Q65111A7726	03-May-20	03-Nov-21	KW DPLS31.SB-5H5J-E5P7-QV-1-120-S	Q65112A7340
KW DPLS31.SB-7H5J-E5I6-F-1-120-R18-T-XX	Q65111A7944	03-May-20	03-Nov-21	KW DPLS31.SB-5H5J-E5P7-QV-1-120-S	Q65112A7340
KW DPLS31.SB-7H5J-G5J6-F-1-120-R18-XX	Q65111A8876	03-May-20	03-Nov-21	KW DPLS31.SB-5H5J-E5P7-QV-1-120-S	Q65112A7340
LUW CEUP.CE-7M6N-IN-1-700-R18-Z-ZKW	Q65111A8958	03-May-20	03-Nov-21	LUW CEUP.CE-5M6N-HNJJN-8E8G-700-S	Q65112A3912
KW DPLS31.SB-7H5J-IL6-EG-1-120-R18-XX	Q65111A9038	03-May-20	03-Nov-21	KW DPLS31.SB-5H5J-E5P7-QV-1-120-S	Q65112A7340
KW DPLS31.SB-8H6J-E5H7-EG-1-120-R18-XX	Q65111A9181	03-May-20	03-Nov-21	KW DPLS31.SB-5H5J-E5P7-QV-1-120-S	Q65112A7340
KW DPLS31.SB-7H5J-K6L7-EG-1-120-R18-T-YA	Q65111A9778	03-May-20	03-Nov-21	KW DPLS31.SB-5H5J-E5P7-QV-1-120-S	Q65112A7340
KW DPLS31.SB-7H5J-F6J7-EG-1-120-R18-XX	Q65111A9780	03-May-20	03-Nov-21	KW DPLS31.SB-5H5J-E5P7-QV-1-120-S	Q65112A7340
LUW CEUP.CE-M77M-fcbB46-1-700-R18-Z-HAN	Q65111A9815	03-May-20	03-Nov-21	LUW CEUP.CE-5M6N-HNJJN-8E8G-700-S	Q65112A3912
LT TTSD-U1V2-36-W6G6-10-R18-Z	Q65112A0124	03-May-20	03-Nov-21	LT TTSD-U1V2-36-S446-10-S	Q65113A0864
KW DPLS31.SB-7H8H-H5J6-EG-1-120-R18-XX	Q65112A0750	03-May-20	03-Nov-21	KW DPLS31.SB-5H5J-E5P7-QV-1-120-S	Q65112A7340
KW DPLS31.SB-7H5J-E5G6-FG-1-120-R18-XX	Q65112A0829	03-May-20	03-Nov-21	KW DPLS31.SB-5H5J-E5P7-QV-1-120-S	Q65112A7340
KW DPLS31.SB-7H5J-F6H7-EG-1-120-R18-XX	Q65112A1188	03-May-20	03-Nov-21	KW DPLS31.SB-5H5J-E5P7-QV-1-120-S	Q65112A7340
LW A6SG-V2BA-FKOPNO-0-20-R33-Z	Q65112A1366	03-May-20	03-Nov-21	LW A6SG-V2BA-FKOPNO-0-20-R33	Q65113A1198
LW TTSD-R2T1-FKOPNO-W266-5-R18-Z	Q65112A1379	03-May-20	03-Nov-21	LW TTSD-R2T1-FKOPNO-W266-5-R18	Q65113A1043
LW TTSD-U1V2-FKOPNO-36-20-R18-Z	Q65112A1381	03-May-20	03-Nov-21	LW TTSD-U1V2-FKOPNO-35-20-S	Q65113A0873
LW T6SG-V1BA-FKOPNO-0-20-R18-Z	Q65112A1382	03-May-20	03-Nov-21	LW T6SG-V1BA-FKOPNO-0-20-R18	Q65113A1045
LW A6SG-V2BB-FK1NN1-0-20-R33-Z-XX	Q65112A1407	03-May-20	03-Nov-21	LW A6SG-V2BA-FKOPNO-0-20-R33	Q65113A1198
LW A6SG-V2BB-FK2NM2-0-20-R33-Z-XX	Q65112A1420	03-May-20	03-Nov-21	LW A6SG-V2BA-FKOPNO-0-20-R33	Q65113A1198
LW A6SG-V2BB-FK3PM3-0-20-R33-Z-XX	Q65112A1470	03-May-20	03-Nov-21	LW A6SG-V2BA-FKOPNO-0-20-R33	Q65113A1198
KW DPLS31.SB-7H5J-E6H7-EG-1-120-R18-XX	Q65112A1550	03-May-20	03-Nov-21	KW DPLS31.SB-5H5J-E5P7-QV-1-120-S	Q65112A7340
LUW CEUP.HD-5N7N-U2-8E8F-1000-R18-Z-B	Q65112A1589	03-May-20	03-Nov-21	LUW CEUP.CE-5M6N-HNJJN-8E8G-700-S	Q65112A3912
LW M673-K1N1-FK3PM3-0-2-R18-Z-XX	Q65112A1593	03-May-20	03-Nov-21	LW M673-K2N1-FKOPNO-U626-2-R18-Z	Q65112A1365
LW E6SG-AABB-JKPL-46-30-R18-Z	Q65112A2036	03-May-20	03-Nov-21	LW E6SG-AABB-JKPL-46-30-R18	Q65113A1054
LUW CEUP.CE-6M7M-IN-1-700-R18-Z-HAN	Q65112A2130	03-May-20	03-Nov-21	LUW CEUP.CE-5M6N-HNJJN-8E8G-700-S	Q65112A3912
KW DPLS31.SB-7H5J-E6I5-EG-1-120-R18-T-XX	Q65112A2404	03-May-20	03-Nov-21	KW DPLS31.SB-5H5J-E5P7-QV-1-120-S	Q65112A7340
LB E6SG-T2V1-35-46-30-R18-Z	Q65112A2449	03-May-20	03-Nov-21	LB E6SG-T2V1-35-46-30-R18	Q65113A1394
LS G6SP-DBEA-1-3A4B-140-R18-Z-XX	Q65112A2561	03-May-20	03-Nov-21	LS G6SP-CADB-1-1-140-R18-Z	Q65111A1078

KW DPLS31.SB-7H5J-M6P7-EG-1-120-R18-PA	Q65112A3180	03-May-20	03-Nov-21	KW DPLS31.SB-5H5J-E5P7-QV-1-120-S	Q65112A7340
LB G6SP-BB-35-1-140-R18-Z-XX	Q65112A3427	03-May-20	03-Nov-21	LB G6SP-BACB-35-47-140-R18-Z	Q65111A8888
KT DELQS1.12-TIVH-36-S4A6-10-S	Q65112A4762	03-May-20	03-Nov-21	KT DELQS1.12-TIVH-36-S446-10-S	Q65113A0865
KW DPLS31.SB-7H5J-K5M6-EG-1-120-R18-BSH	Q65112A5370	03-May-20	03-Nov-21	KW DPLS31.SB-5H5J-E5P7-QV-1-120-S	Q65112A7340
LS G6SP-DBEA-1-3A4B-140-R18-Z-OL	Q65112A6369	03-May-20	03-Nov-21	LS G6SP-CADB-1-1-140-R18-Z	Q65111A1078
KW HKL531.TE-8Q7R-ebvF46fcbB46-4LZL-KO	Q65112A6893	03-May-20	03-Nov-21	KW HKL531.TE-F0F8-ebvFfcbB46-4LZL-A00-S	Q65112A8333
LA E67F-CBDB-24-1-50-R18-Z-BAY	Q65112A8210	03-May-20	03-Nov-21	LA E67F-BADB-24-3A5A-50-R18	Q65112A9414
LW ETSG-ABCA-JKPL-1-30-R18-Z	Q65112A9743	03-May-20	03-Nov-21	LW ETSG-ABCA-JKPL-46-30-R18	Q65113A1053
LUW CEUN.CE-6L-HN-8E8G-350-R18-ZW-LEA	Q65113A0506	03-May-20	03-Nov-21	LUW CEUN.CE-7K7L-HN-1-350-S	Q65112A9412
KW CELMM1.TG-X3X8-5L06L0-2464-350-R18-HE	Q65113A1139	03-May-20	03-Nov-21	KW CELMM1.TG-S3SA-ebvFfcbB46-8F8H-A50-S	Q65112A9875
LUW CEUP.CE-7M-IN-8E8G-700-R18-ZKW	Q65113A2088	03-May-20	03-Nov-21	LUW CEUP.CE-5M6N-HN-8E8G-700-S	Q65112A3912