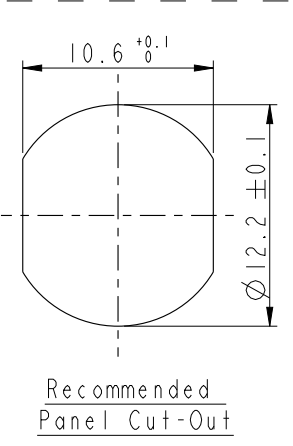
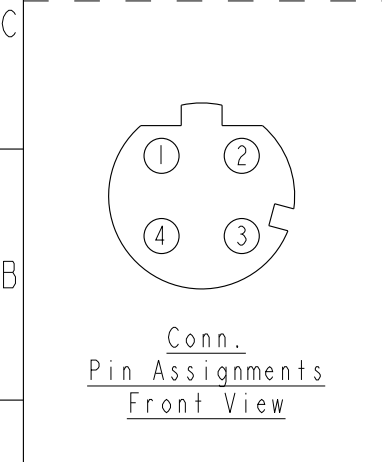
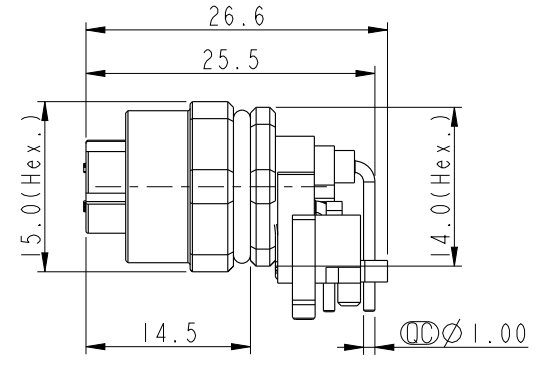
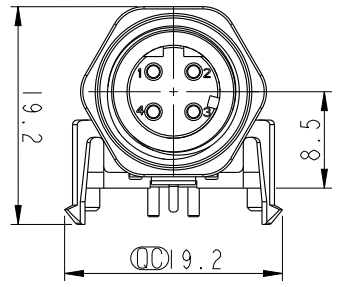
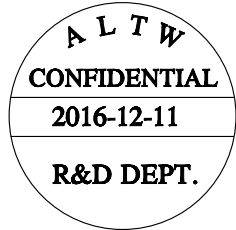
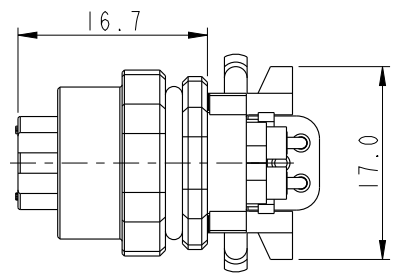
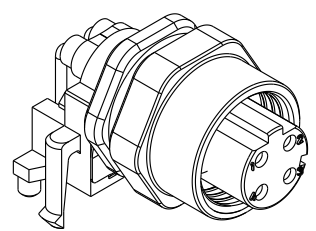
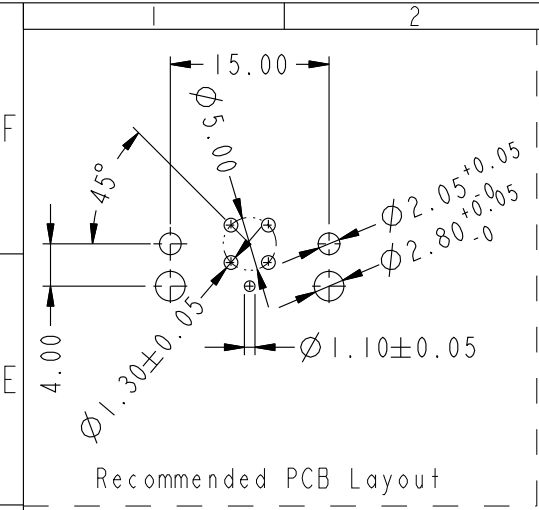
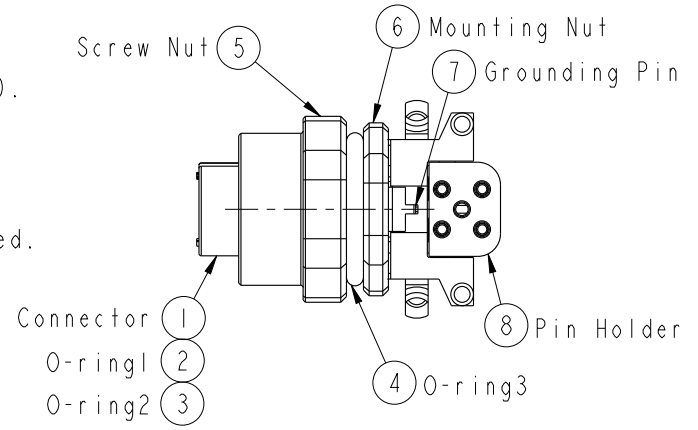


THIS DOCUMENT IS SUBJECT TO CHANGE WITHOUT NOTICE. IT IS CONFIDENTIAL AND A PROPERTY OF Amphenol LTW. DISCLOSURE TO THIRD PARTY HAS TO BE AUTHORIZED BY Amphenol LTW.

REV.	ECN NO.	DATE	SIGN	DESCRIPTION



- Note:
- * ⌀ Important Dimension To Check.
 - * Waterproof Rating: IP67(Mated Waterproof).
 - * Connector: PBT+PC, Black.
 - * Female Pin: Copper Alloy, Gold Plated.
 - * Mounting Nut: Zinc Alloy, Nickel Plated.
 - * Screw Nut: Zinc Alloy, Nickel Plated.
 - * Grounding Pin: Copper Alloy, Nickel Plated.
 - * O-ring1: Silicon, Black.
 - * O-ring2: Silicon, Gray.
 - * O-ring3: Silicon, Gray.
 - * Pin Holder: PBT+PC, Black.
 - * For Panel Thickness Max. 3.0mm.
 - * For PCB Thickness Max. 1.5mm.



UNIT:mm	⌀	⌀
TOLERANCE		
.X	±0.25	
.XX	±0.1	
.XXX	±0.05	
ANGLES	±1°	

TITLE M12,90° Panel,w/ Grounding Pin 4PIN F CONN F PIN			
SCALE 3:2	SIZE A4	SHEET 1 OF 1	
REV. A	WC-REV. A.2	⌀ : Inspection item	

Amphenol LTW
安費諾亮泰企業股份有限公司

ITEM NO MSDS-04PFFR-SF7003	DRAWN BY Yulong_wang	DATE 2016-12-11
DWG NO MSDS-04PFFR-SF7003	CHECKED BY Jinhai	DATE 2016-12-11
CUSTOMER ALTW	APPROVED BY Jerry	DATE 2016-12-11