

FEATURES

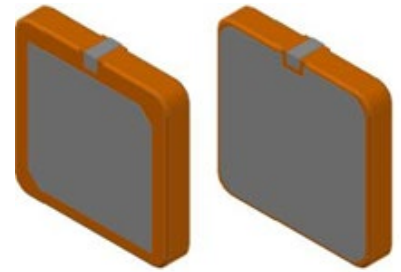
- High Gain, Compact
- Pin Type
- RoHS Compliant

APPLICATION

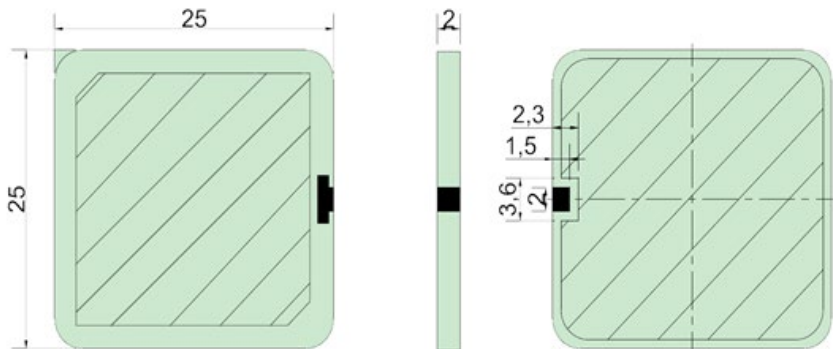
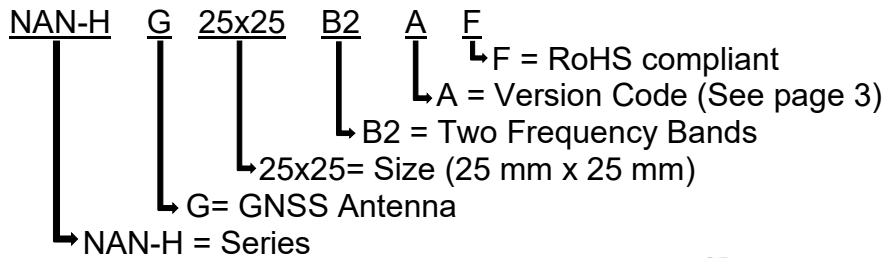
- Tracking
- Fleet Management

SPECIFICATIONS

PN:NAN-HG25x25B2AF	
Electrical	
Center Frequencies	1596 MHz 1602 MHz
Return Loss	≥ 10 dB
Gain	3.0 dBi (max)
Polarization	RHCP
Impedance	50Ω
Dimensions (mm)	
Length	25 ± 0.3
Width	25 ± 0.3
Height	2 ± 0.3
Ground Plane	50 x 50 mm
Environmental	
Operating Temperature	-40°C~+85°C
RoHS Compliant	Yes

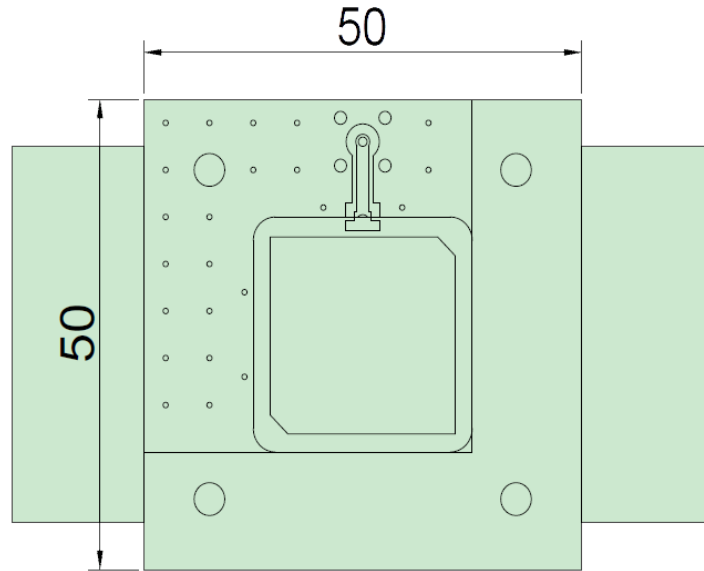


RoHS Compliant
includes all homogeneous materials
(see part numbering system for details)

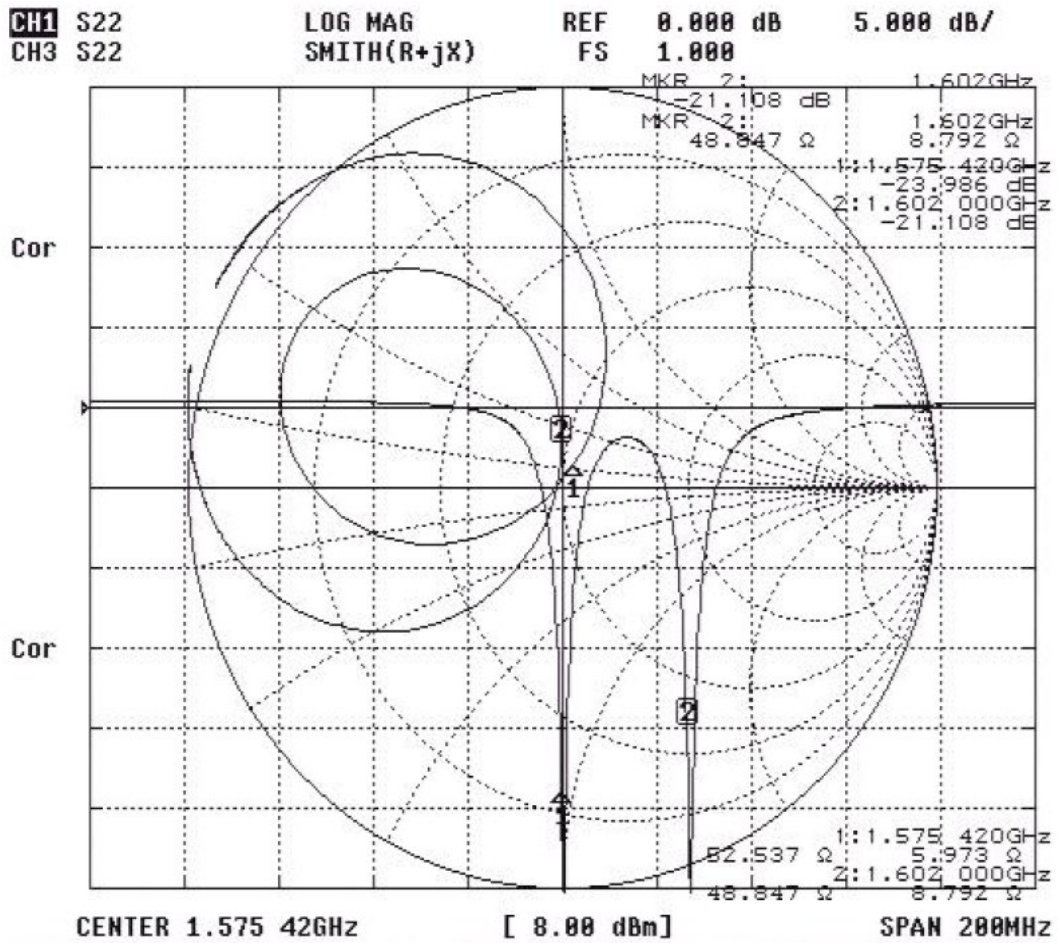


Tolerance:±0.3
Unit:mm

TEST FIXTURE



ANTENNA PATTERN



Version History and Status

Version	Date Issued	Details	Status
A	July 28 th , 2021	Initial Release Center Frequency= 1596MHz & 1602 MHz Gain = 3 dBi	Supported
B	August 11 th 2021	New Release Center Frequency= 1575.42MHz & 1602 MHz Gain = 4 dBi	Supported
C	August 17 th 2021	New Release Center Frequency= 1575.42MHz & 1602 MHz Gain = 2.5 dBi	Supported
D	December 1 st 2021	New Release Center Frequency= 1575.42MHz & 1602 MHz Gain = 4.5 dBi	Supported
E	June 22 nd , 2022	New Release Double Layer Center Frequency= 1575.42MHz & 1176 MHz Gain = 0 dBi	Supported
G	August 18 th , 2022	New Release Center Frequency= 1575.42MHz & 1602 MHz Gain = 2 dBi	Supported

Please reach out to NIC for any customization requests and other inquiries:

- NIC Technical Support: tpmg@niccomp.com
- Compliance Support: rohs@niccomp.com