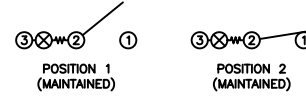


SCHEMATIC



SPECIFICATIONS

FUNCTION:
1P1T OFF-ON

RATINGS:
ANSI/UL 1054 and CAN/CSA C22.2 No. 55 (E194579):
15A 125VAC [cURus]
7.5A 250VAC [cURus]

EN 61058-1:2002+A2 (SE/09138-1):
16(4)A 250V~ 1E4 T125/55 [ENEC14, SEMKO]
16(8)A 250V~ 1E4 T125/55 [ENEC14, SEMKO]

ILLUMINATION VOLTAGE:
250V

CONTACT RESISTANCE:
Initial: 35mΩ Max. at 50VAC

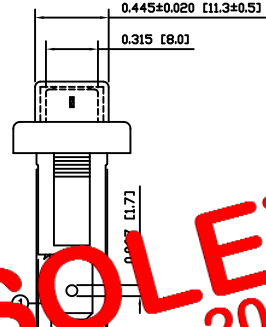
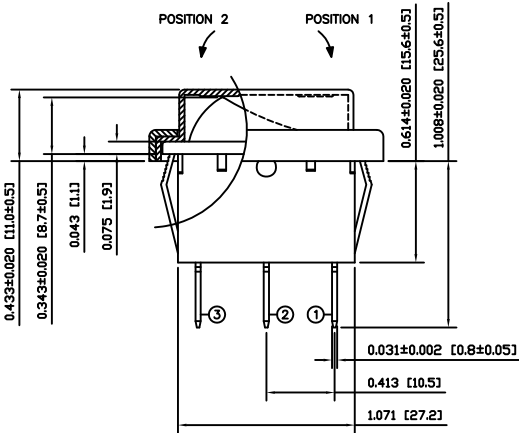
INSULATION RESISTANCE:
100MΩ Min. at 500VDC

DIELECTRIC STRENGTH:
1,500VAC for 1 Minute

ELECTRICAL LIFE:
6,000 Cycles [cURus]
10,000 Cycles [ENEC14, SEMKO]

TEMPERATURE:
Operating: -20°C to 85°C [cURus]
Operating: -20°C to 125°C [ENEC14, SEMKO]

APPROVALS:



OBSOLETE
November 2017
PCR 23092

COLORS AND MARKINGS

BODY:
Black

ACTUATOR:
Transparent Green

MARKINGS:
I/O Vertical (1)

MARKING COLOR:
White

FRAME:
Black

MATERIALS

BODY:
Polyamide 6/6 (PA66), UL94 V-2

ACTUATOR:
Polycarbonate (PC), UL94 V-2

LAMP CARRIER:
Polyamide 6/6 (PA66), UL94 V-2

LAMP:
Neon Bulb

LAMP SPRING:
Steel

SPRING:
Steel

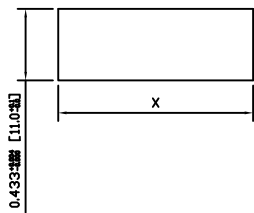
CONTACTS:
Silver Plated Copper

TERMINALS:
Silver Plated Copper
Brass

CAP:
Polyvinyl Chloride (PVC)

FRAME:
Polyamide 6/6 (PA66), UL94 V-2

SUGGESTED PANEL CUTOUT



| PANEL THICKNESS | X |
|-------------------------|--------------|
| 0.030~0.049 [0.75~1.25] | 1.197 [30.4] |
| 0.049~0.079 [1.25~2.00] | 1.210 [30.7] |

| ACTUATOR | A | 09/06/29 | CAB |
|----------------|------|----------|-----|
| BODY | A | 09/06/29 | CAB |
| COLORS | A | 09/06/29 | CAB |
| MATERIALS | A | 09/07/31 | CAB |
| SPECIFICATIONS | B | 11/05/03 | CAB |
| REFERENCE | REV. | DATE | BY |

THE INFORMATION CONTAINED IN THIS DOCUMENT IS PROPRIETARY TO E-SWITCH AND IS NOT TO BE COPIED OR TRANSFERRED

| B | CHANGED VDE APPROVAL TO SEMKO APPROVAL | 19991 | 11/05/03 | CAB |
|--|--|-------|----------|----------|
| A <td>INITIAL RELEASE</td> <td>19978</td> <td>10/02/19</td> <td>CAB</td> | INITIAL RELEASE | 19978 | 10/02/19 | CAB |
| REV. | DESCRIPTION | PCR | DATE | DRAWN BY |

| DIMENSIONS | INCHES [MILLIMETERS] |
|--------------------|----------------------|
| GENERAL TOLERANCES | ±0.008 [±0.2] / ±1' |
| SCALE | DRAWING NOT TO SCALE |

RB141C1021-137/ACC-F01-1

| | | |
|-----------------------------|---------------------|---------------|
| ITEM NUMBER 38-RB1S00041 | DATE MAY 3, 2011 | REVISION B |
|-----------------------------|---------------------|---------------|