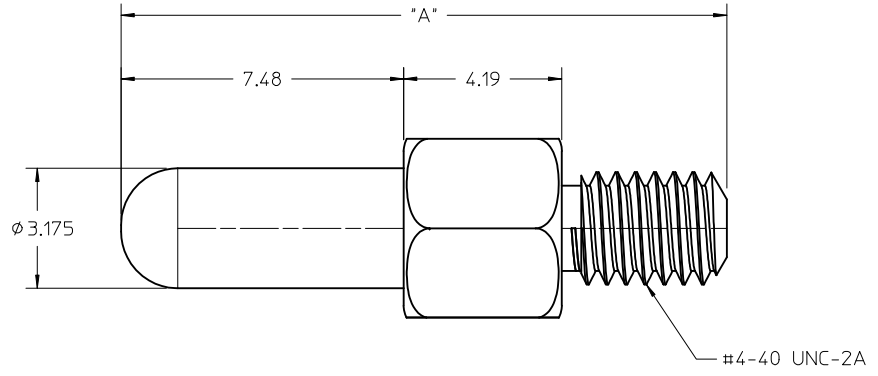
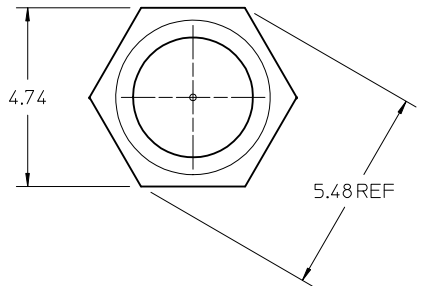
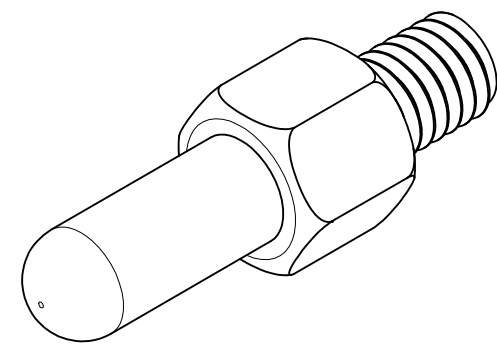


MAT'L NO.	DIM. 'A'
74962-0100	16.04
74962-0200	17.04

NOTES:
 1. MATERIAL/PLATING:
 1215 STEEL ZN CLEAR TRIVALENT CHROMATE
 2. PARTS ARE PACKAGED IN POLY BAGS CONSISTING OF 40 PIECES.
 3. EXTERNAL THREADS TO WITHSTAND A MINIMUM APPLIED TORQUE OF 5 lbf in/5.76 kgf cm.



ADD CHART EC NO: UCP2010-1983 DRWN: JJANTELEZIO 2009/12/23 CHKD: MBANAKIS 2010/02/09 APPR: MBANAKIS 2010/02/10	QUALITY SYMBOLS	GENERAL TOLERANCES (UNLESS SPECIFIED)	DIMENSION STYLE	SCALE	DESIGN UNITS	THIRD ANGLE PROJECTION
	▽=0	mm INCH	MM ONLY	10:1	METRIC	
	▽=0	4 PLACES ± --- ± ---	DRAWN BY DATE	TITLE		
	▽=0	3 PLACES ± 0.13 ± ---	JJANTELEZIO 2009/10/07	3/16 JACKPOST POLARIZATION STANDOFF		
		2 PLACES ± 0.25 ± ---	CHECKED BY DATE	MOLEX INCORPORATED		
		1 PLACE ± --- ± ---	MBANAKIS 2009/10/08	MATERIAL NO. SEE CHART		
		ANGULAR ± 1/2°	APPROVED BY DATE	DOCUMENT NO. SD-74962-100		
		DRAFT WHERE APPLICABLE MUST REMAIN WITHIN DIMENSIONS	SHEET NO. 1 OF 1			
			THIS DRAWING CONTAINS INFORMATION THAT IS PROPRIETARY TO MOLEX INCORPORATED AND SHOULD NOT BE USED WITHOUT WRITTEN PERMISSION			