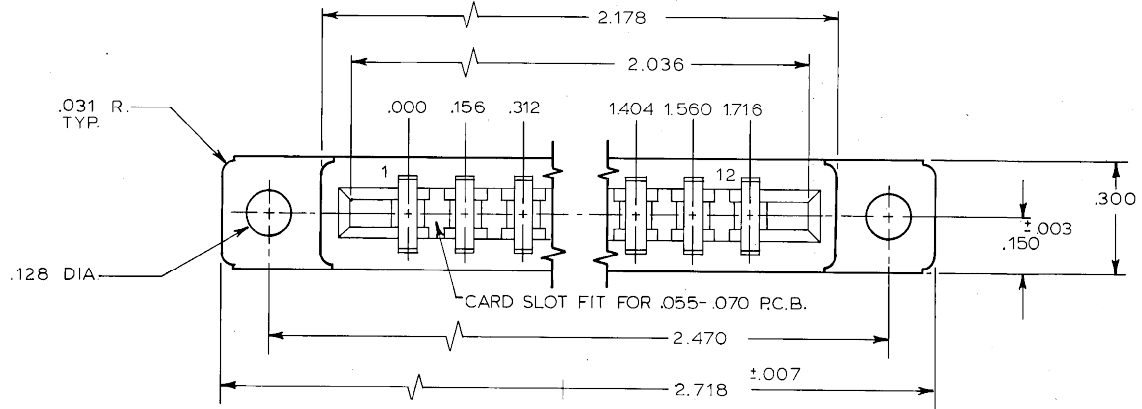


THIS DRAWING IS UNPUBLISHED. RELEASED FOR PUBLICATION NOVEMBER 8, 1967.
 © COPYRIGHT 1967 BY AMP INCORPORATED, HARRISBURG, PA. ALL INTERNATIONAL RIGHTS RESERVED. AMP PRODUCTS MAY BE COVERED BY U.S. AND FOREIGN PATENTS AND/OR PATENTS PENDING.

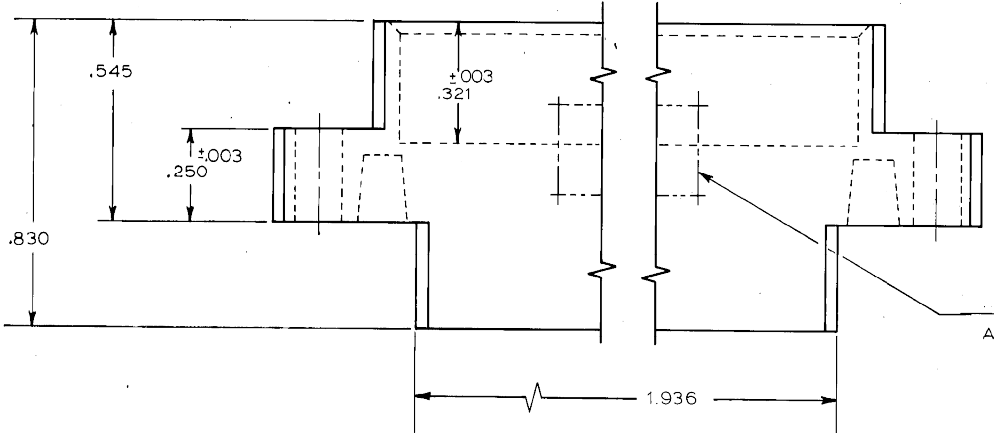
REVISIONS						
P	F	ZONE	LTR	DESCRIPTION	DATE	APPROVED
			F ₁	REDWN/AD0314	SR 5/4/84	HWR
			G	REDRAWN PER COIO-1301-94	11/3/94	55/
			H	REV PER ECO-0630-233-01	08OCT81	MM
			K	REVISED PER ECO-17-014152	04JAN2018	RS MM
			L	REVISED PER ECO-19-014055	12SEP2019	RS MM

D



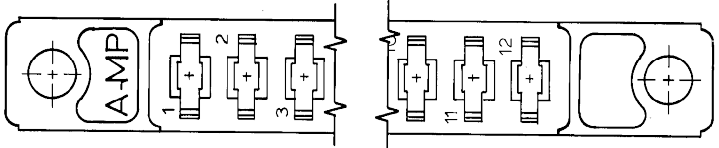
±.003 ±.003
 .030 DIA. x .015 HIGH
 IDENTIFICATION BOSS
 EVERY FIFTH CAVITY

C



MARKED "AMP", PART NO., AND DATE CODE

B



1. USE ON CONTACT KEYING PLUG NO. 5832B3-1
2. USE CONTACT NO. 583259
3. GLASS FILLED NYLON, COLOR: BLACK, OR GLASS FILLED POLYESTER, COLOR: BLACK.

A

583300 - 1		AS SHOWN			
CODE IDENT	DWG SIZE	PART NO OR IDENTIFYING NO	NOMENCLATURE OR DESCRIPTION		
← REVISION OF EACH ASSY NO (WHEN BLANK, USE DWG REVISION)			PARTS LIST		
QTY REQD PER ASSY		CONTRACT NO			
UNLESS OTHERWISE SPECIFIED DIMENSIONS ARE IN INCHES. TOLERANCES ON: DECIMALS ±.005 ANGLES ±		DR		NAME	
		CHK		HOUSING, MODIFIED FORK	
MATERIAL		APPD		12 POS., .156 CENTERS.	
		APPD			
FINISH		DSGN APPD		SIZE	FSCM NO
		OTHER APPD		C	00779
				DRAWING NO	REV
				583300	L
		SCALE 4:1		SHEET 1 OF 1	