



**ANATECH ELECTRONICS INC**  
RF & Microwave Filters & Products

# 0-400 MHz Lowpass Filter

**Part Number: AE400L9234**



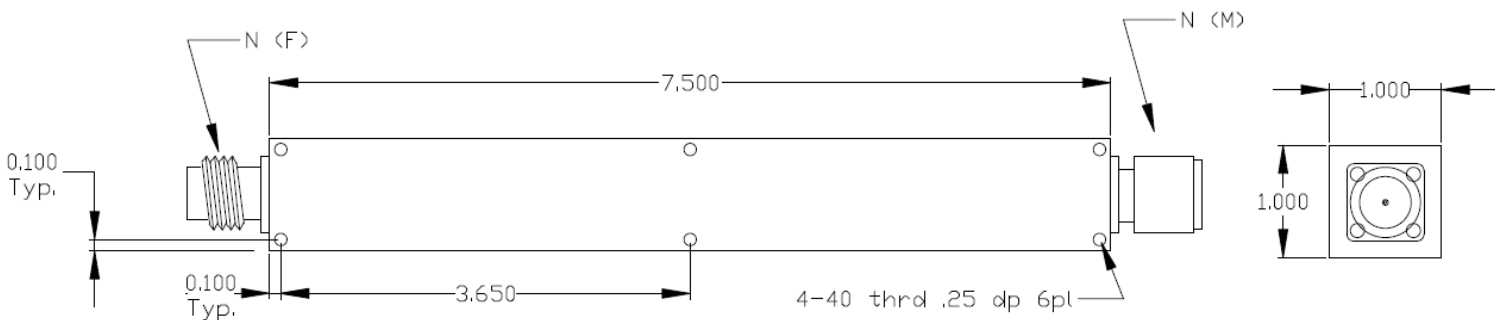
## Electrical specifications

**Cutoff Frequency (FC):** 400 MHz  
**Passband:** 0-400 MHz  
**Insertion loss @Passband:** 0.3 dB Min  
**VSWR:** 1:8  
**Return loss @Passband:** 18 dB Max  
**Rejection @ 800-5000 MHz:** 100 dB Max  
**Power Handling:** 200 W

## Mechanical

**Mounting Method:** N-Type (F)/ N-Type (M)  
**Dimensions:** 7.5 x 1.0 x 1.0 Inches  
**Operating Temperature:** -40 to +70° C  
**Storage Temperature:** -50 to +95° C

## Outline Drawing:



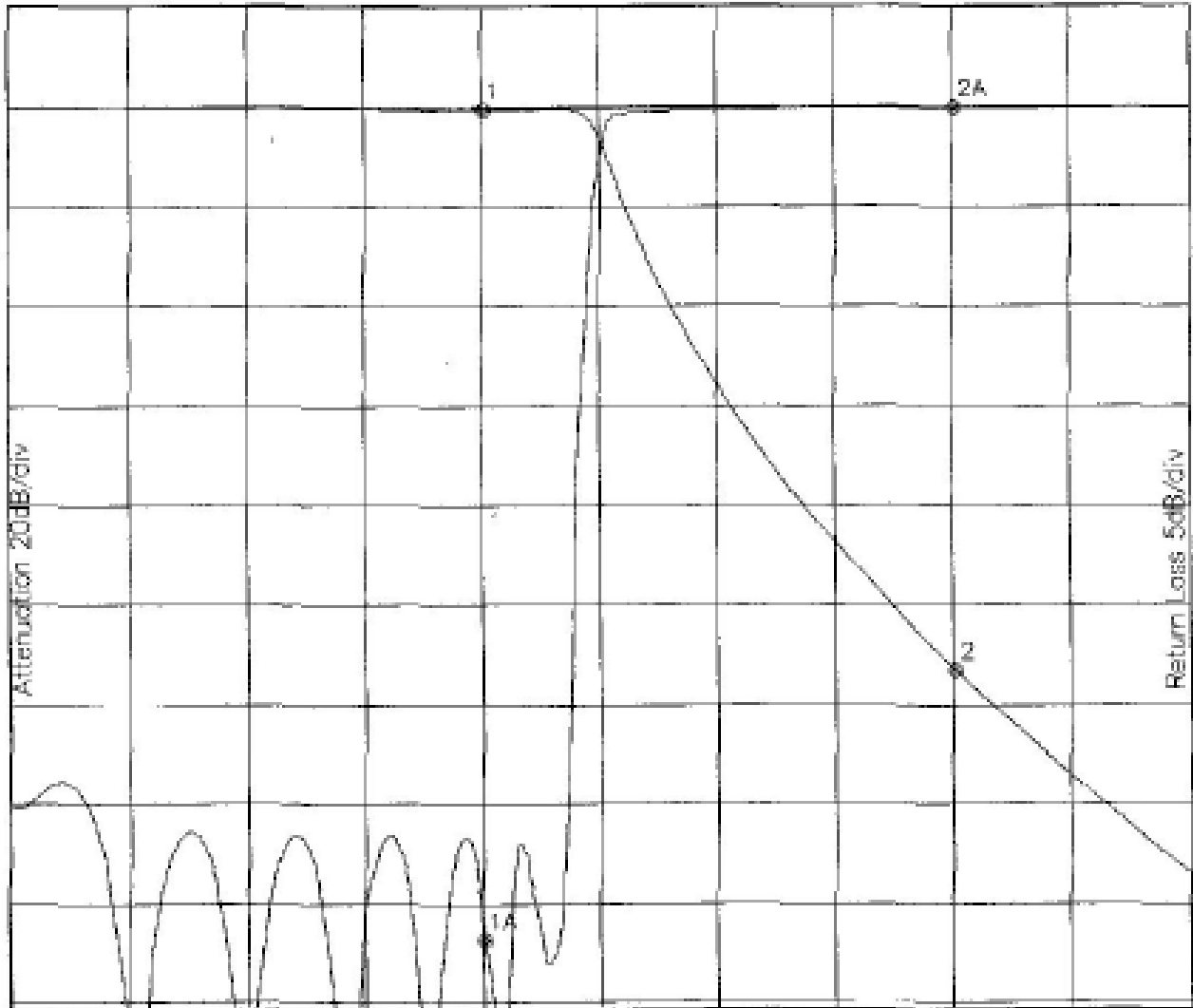


### Response Plot

A3989 lod

MAY 13, 2009

Attenuation/Return Loss



Attenuation Start: 0.1GHz Stop: 1000.0MHz

Return Loss Start: 0.1GHz Stop: 1000.0MHz

Marker 1 Freq 400.64MHz Atten -0.298dB

Marker 1A Freq 400.64MHz Ret Loss -41.881dB

Marker 2 Freq 801.29MHz Atten -113.060dB

Marker 2A Freq 801.29MHz Ret Loss 0.000dB