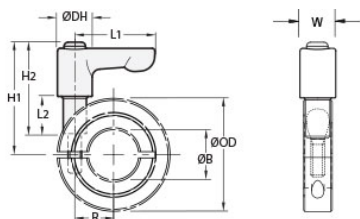




LV-MCL-15-A

Ruland LV-MCL-15-A, 15mm One-Piece Shaft Collar with Clamping Lever, Aluminum Collar with Zinc Plated Lever, 34mm OD, 13mm Width



Description

Ruland LV-MCL-15-A is a one-piece quick clamping shaft collar with clamping lever with a 15mm bore, 34mm OD, and 13mm width. It is made from MCL-15-A and LF30-CL-M5:15-ZS. The clamp style design does not mar the shaft, is easy to remove, and is indefinitely adjustable. The threaded stud on the lever is used in place of standard collar hardware. When combined, the two parts create a shaft collar that requires no tools to install, remove, or reposition and is ideally suited for packaging, printing, and other applications where frequent setup changes and adjustments are needed. Once the lever is installed in the shaft collar, users simply turn the lever until they meet their desired torque. The adjustable lever can be repositioned by the user without the loss of holding power by lifting the handle and twisting it 40° to lock it in a new position. This allows for use in space constrained environments where 360° rotation is not possible to fully seat the lever. MCL-15-A is made from high-strength 2024 aluminum. LF30-CL-M5:15-ZS has a zinc plated steel handle and stainless steel threaded stud. This material combination allows for a lightweight durable quick clamping and release component that is suitable for most industrial applications. The lever is black to seamlessly integrate with the aesthetics of most equipment. MCL-15-A is manufactured by Ruland and LF30-CL-M5:15-ZS is manufactured by Otto Ganter. LV-MCL-15-A is RoHS3 and REACH compliant.

Product Specifications

Bore (B)	15 mm	Bore Tolerance	+0.050 mm / +0.012 mm
Outer Diameter (OD)	34 mm	Center to Lever Top H1	35.2 mm
Width (W)	13 mm	Width Tolerance	+0.076 mm / -0.254 mm
Lever Length L1	30 mm	Lever Height H2	35 mm
Hub Diameter DH	13 mm	Sleeve Length L2	15 mm
Recommended Shaft Tolerance	+0.000 mm / -0.013 mm	Thread TH	M5
Hex Wrench Size	4.0 mm	Seating Torque	9.5 Nm
Screw Location (R)	12.50 mm	Number of Screws	1 ea
Collar Part Number	MCL-15-A	Lever Part Number	LF30-CL-M5:15-ZS
Collar Material	Aluminum	Collar Finish	Bright
Handle Color	Black	Handle Material	Zinc
Handle Finish	Powder Coated	Insert and Screw Material	303 Stainless Steel
Manufacturer	Ruland Manufacturing	Country of Origin	Shaft Collar - USA Lever - Germany
Weight (lbs)	0.122400	UPC	634529247341
Tariff Code	8483.60.8000	UNSPC	31162811

Note 1 Performance ratings are for guidance only. The user must determine suitability for a particular application.

Prop 65  **WARNING** This product can expose you to the chemical Soots, Benzene, Lead, Nickel (metallic), and Ethylene Thiourea, known to the State of California to cause cancer and birth defects or other reproductive harm. For more information go to www.P65Warnings.ca.gov.