

Han 32EE CRIMP TERM INSERT MALE

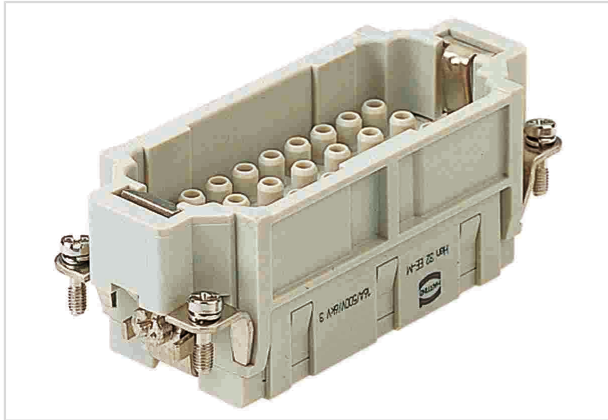


Image is for illustration purposes only. Please refer to product description.

Part number	09 32 032 3001
Specification	Han 32EE CRIMP TERM INSERT MALE
HARTING eCatalogue	https://b2b.harting.com/09320323001

Identification

Category	Inserts
Series	Han [®] EE

Version

Termination method	Crimp termination
Gender	Male
Size	16 B
Number of contacts	32
PE contact	Yes
Details	Please order crimp contacts separately.

Technical characteristics

Conductor cross-section	0.14 ... 4 mm ²
Conductor cross-section	AWG 26 ... AWG 12
Rated current	16 A
Rated voltage	500 V
Rated impulse voltage	6 kV
Pollution degree	3
Rated voltage acc. to UL	600 V
Rated voltage acc. to CSA	600 V
Insulation resistance	>10 ¹⁰ Ω
Limiting temperature	-40 ... +125 °C



Pushing Performance

Technical characteristics

Mating cycles	≥500
---------------	------

Material properties

Material (insert)	Polycarbonate (PC)
Colour (insert)	RAL 7032 (pebble grey)
Material flammability class acc. to UL 94	V-0
RoHS	compliant
ELV status	compliant
China RoHS	e
REACH Annex XVII substances	No
REACH ANNEX XIV substances	No
REACH SVHC substances	No
California Proposition 65 substances	Yes
California Proposition 65 substances	Nickel Lead

Specifications and approvals

Specifications	EN 60664-1 IEC 61984
Approvals	DNV GL
UL / CSA	UL 1977 ECBT2.E235076 UL 2237 PVVA2.E318390 CSA-C22.2 No. 182.3 PVVA8.E318390

Commercial data

Packaging size	1
Net weight	60.5 g
Country of origin	Romania
European customs tariff number	85389099
eCl@ss	27440205 Contact insert for industrial connectors