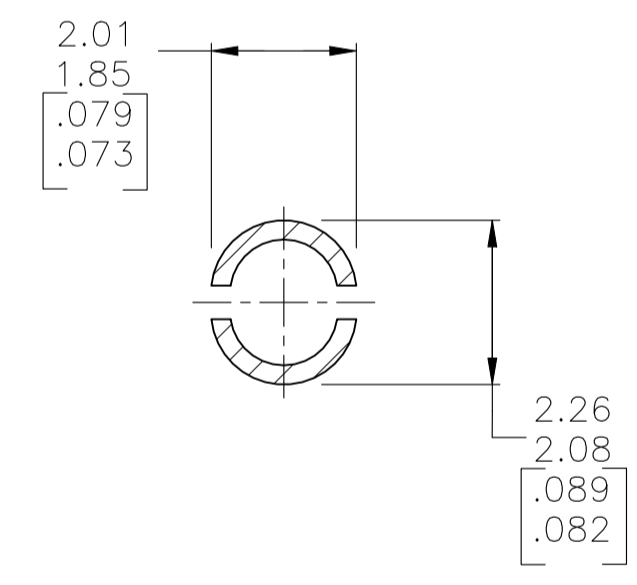
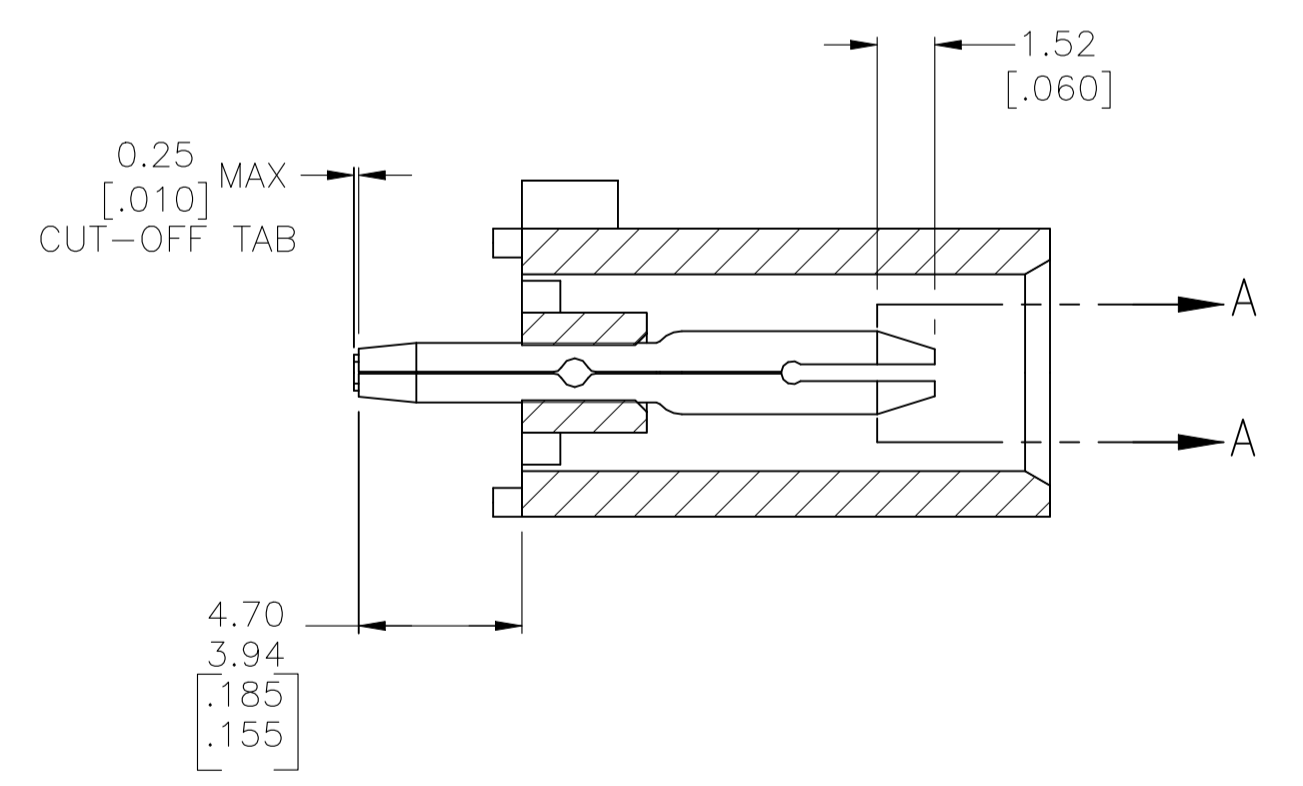
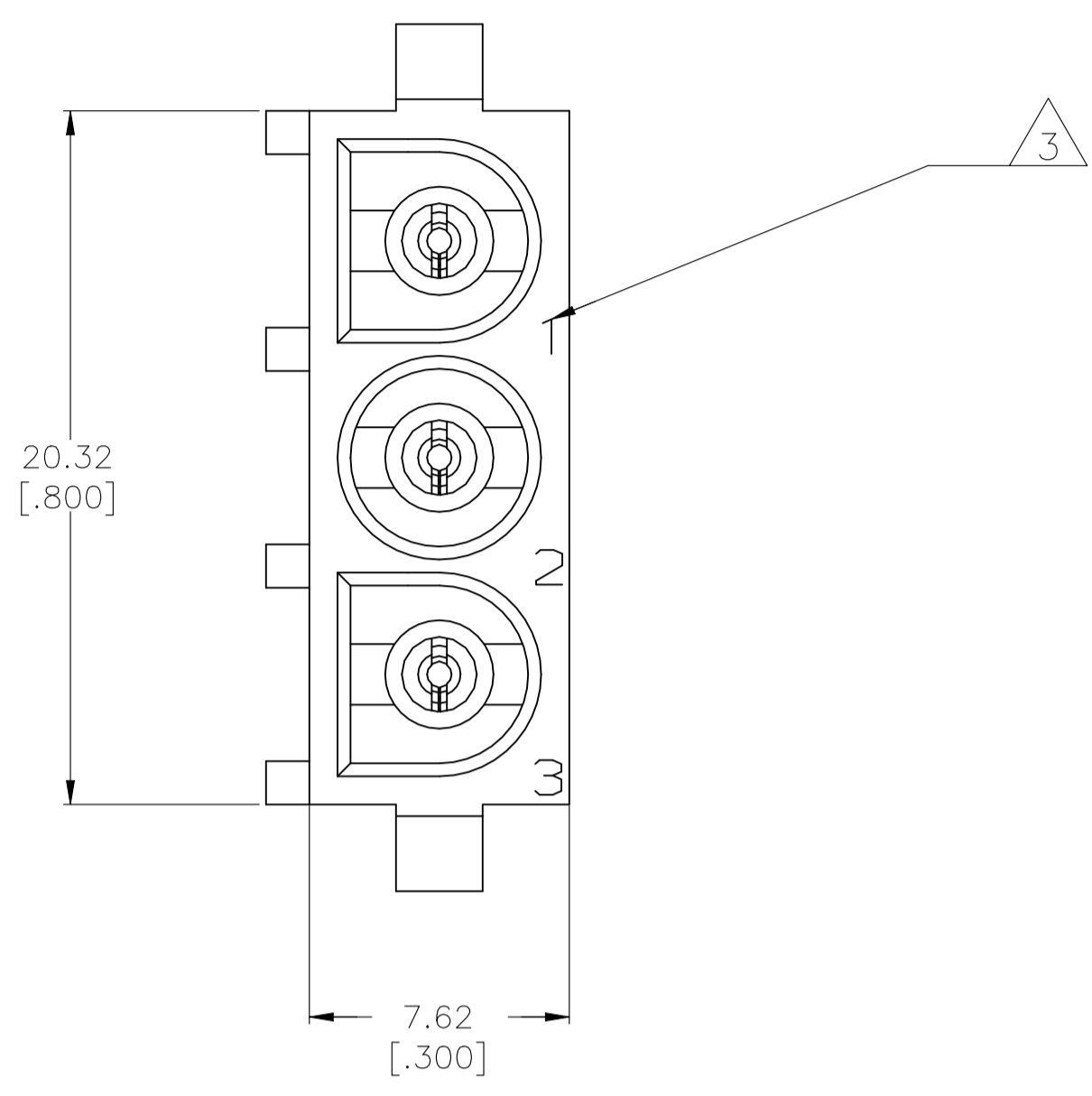
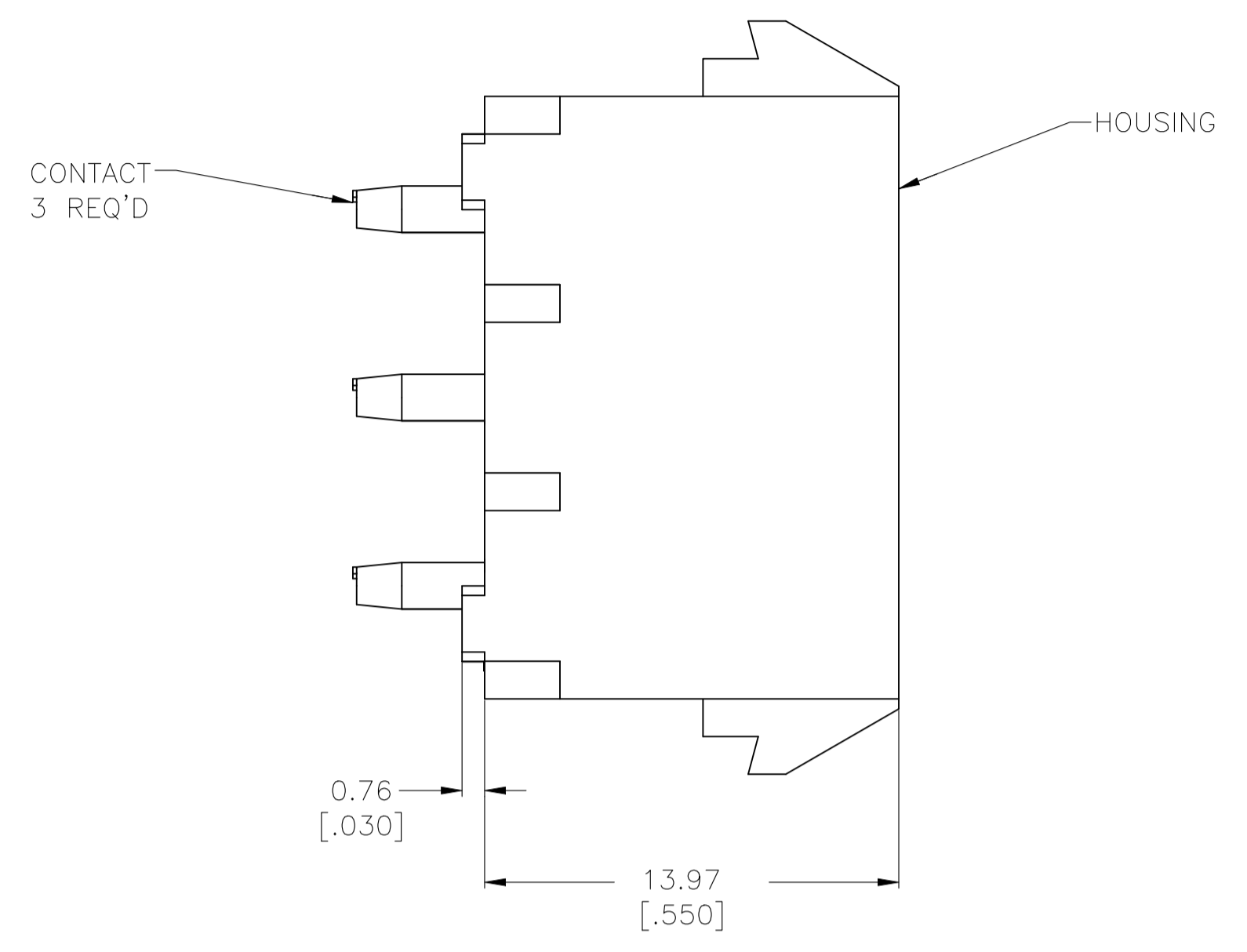
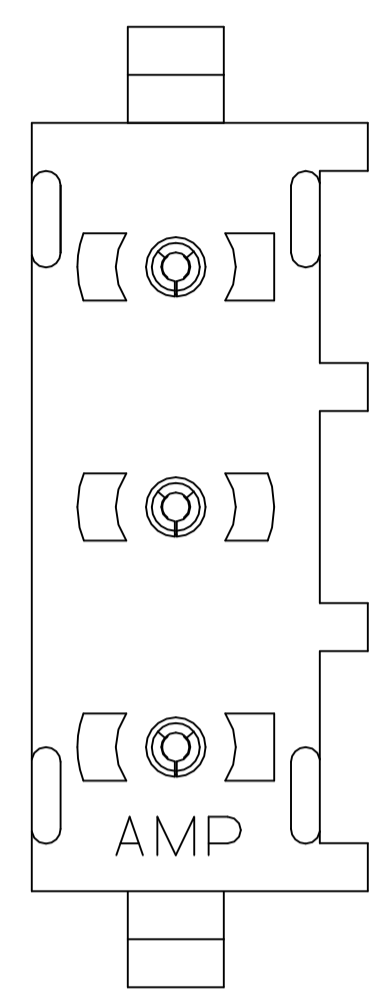
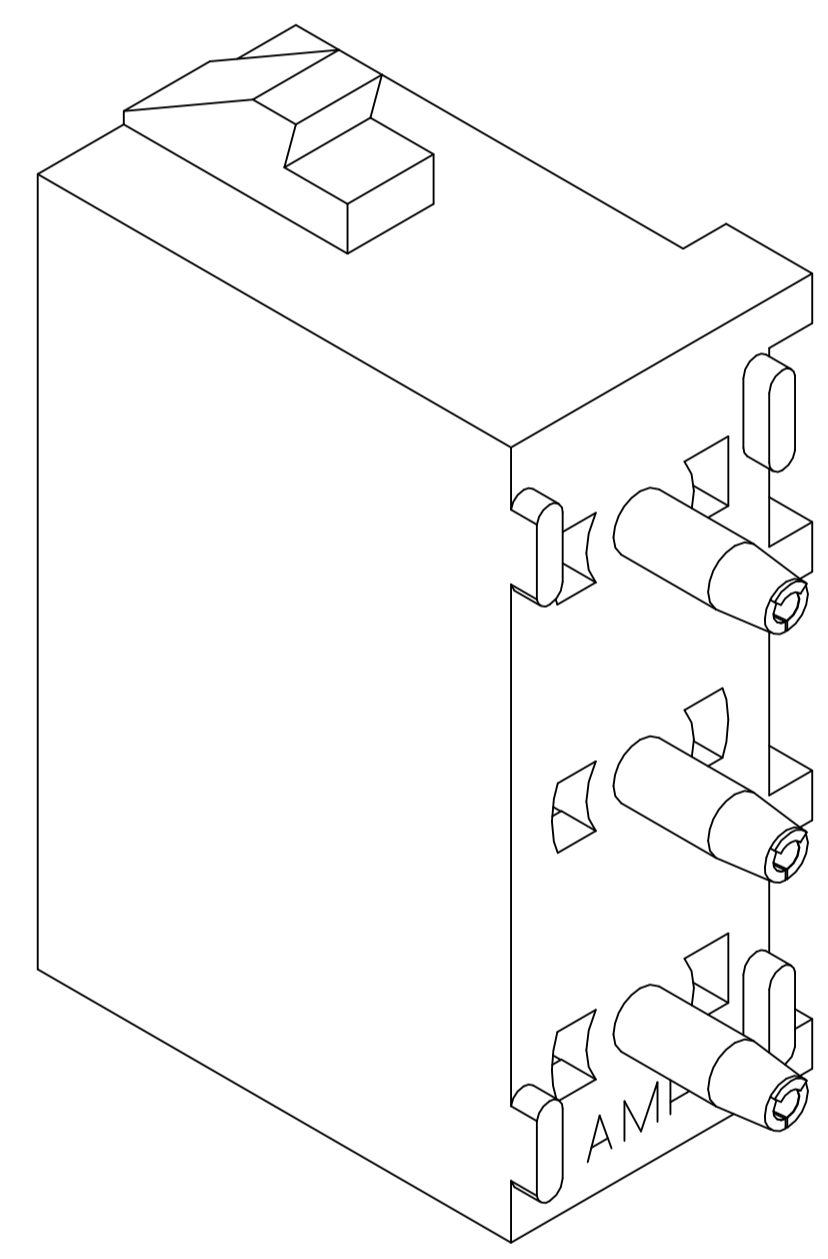


REVISIONS					
REV	DATE	DESCRIPTION	BY	CHK	APP'D
A1	02NOV2021	REVISED PER ECR-21-119230	SS	VS	

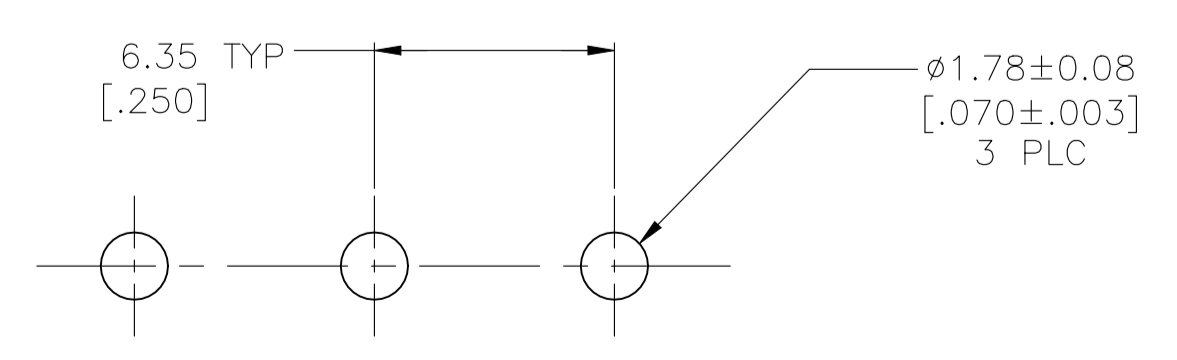
- 1 PARTS COMPLY TO AMP SOLDERABILITY SPECIFICATION 109-11-3.
- 2 DIMENSIONS IN BRACKETS ARE IN INCHES.
- 3 CIRCUIT IDENTIFICATION CHARACTERS ARE ADJACENT TO THE INDICATED CAVITIES, BUT LOCATION AND ORIENTATION MAY DIFFER FROM PRINT.
- 4 FLAMMABILITY UL V-0 FOR THICKNESS 0.4, 0.45, 0.8, 1.6, AND 3.0 PER IEC 60695-11-10.
- 5 GLOW WIRE FLAMMABILITY (GWFI): 960°C FOR THICKNESS 0.45, 0.8, 1.6, AND 3.0 PER IEC 60695-2-12.
- 6 GLOW WIRE IGNITION (GWIT): 825°C FOR THICKNESS 0.45, 800°C FOR THICKNESS 0.8, 775°C FOR THICKNESS 1.6 AND 3.0 PER IEC 60695-2-13.
- 7 DIMENSIONS SHOWN REPRESENT PRODUCT IN DRY CONDITION. ADDITIONAL 2% GROWTH DUE TO END USE LOCATION MOISTURE ABSORPTION MAY OCCUR AND SHOULD BE ACCOUNTED FOR.



SECTION A-A
SCALE 10:1



3-DIMENSIONAL MODEL
NTS



RECOMMENDED MOUNTING HOLE PATTERN
FOR 1.57 [.062] THICK P.C. BOARD

THIS DRAWING IS A CONTROLLED DOCUMENT.		DIN 09JAN2016 RASVESH WARAD		NYLON, UL V-0 GW, NATURAL 1969803-1																							
DIMENSIONS: mm [INCHES]		TOLERANCES UNLESS OTHERWISE SPECIFIED:		PIN CONTACT MATERIAL AND FINISH																							
<table border="1"> <tr><td>0. PLC</td><td>± -</td></tr> <tr><td>1. PLC</td><td>± -</td></tr> <tr><td>2. PLC</td><td>± 0.13 [.005]</td></tr> <tr><td>3. PLC</td><td>± -</td></tr> <tr><td>4. PLC</td><td>± -</td></tr> <tr><td>ANGLES</td><td>± 0°30'</td></tr> </table>		0. PLC	± -	1. PLC	± -	2. PLC	± 0.13 [.005]	3. PLC	± -	4. PLC	± -	ANGLES	± 0°30'	<table border="1"> <tr><td>APVD</td><td>09JAN2016</td></tr> <tr><td>CHK</td><td>WICKES, EVAN</td></tr> <tr><td>NAME</td><td>WICKES, EVAN</td></tr> <tr><td>PRODUCT SPEC</td><td></td></tr> <tr><td>APPLICATION SPEC</td><td></td></tr> </table>		APVD	09JAN2016	CHK	WICKES, EVAN	NAME	WICKES, EVAN	PRODUCT SPEC		APPLICATION SPEC		HOUSING MATERIAL	
0. PLC	± -																										
1. PLC	± -																										
2. PLC	± 0.13 [.005]																										
3. PLC	± -																										
4. PLC	± -																										
ANGLES	± 0°30'																										
APVD	09JAN2016																										
CHK	WICKES, EVAN																										
NAME	WICKES, EVAN																										
PRODUCT SPEC																											
APPLICATION SPEC																											
MATERIAL SEE TABLE		FINISH SEE TABLE		PART NO																							
		WEIGHT 0.000000		A1 00779 C=1969803																							
		CUSTOMER DRAWING		SCALE 5:1 SHEET 1 OF 1 REV A1																							