

DO NOT SCALE FROM THIS PRINT

- NOTES:
1. $\text{\textcircled{C}}$ REPRESENTS A CRITICAL DIMENSION.
 2. ALL DIMENSIONS TO BE ABOUT CL WITHIN $\pm 0.005[0.13]$.
 3. MINIMUM PUSHOUT FORCE: 3 lbs.
 4. MAXIMUM CUT FLASH: $.020[0.50]$.
 5. MEASURE FROM THE TIPS OF THE TERMINALS.
 6. MEASURE AT BOTH ENDS OF PART.
 7. PARTS TO BE PACKAGED IN TUBES FOR 4-50 POSITIONS (.100 [2.54] PITCH) OR 2-25 POSITIONS (.200 [5.08] PITCH), OTHERWISE BULK PACKAGED.
 8. ORDERS WILL BE PACKAGED ACCORDING TO THE SAMTEC PACKAGING EFFICIENCY STANDARDS (SPES) FOUND ON WWW.SAMTEC.COM

BTSW-XXX-XX-X-S-XX-XX

TERMINAL SPACE

- 1: .100[2.54] (FILL EVERY POSITION)
- 2: .200[5.08] (FILL EVERY OTHER POS STARTING AT -01 AND ENDING IN LAST POS)

NO OF POSITIONS

- 1: -01 THRU -50
- 2: -02 THRU -25 (SEE FIG. 3, SHEET 2)

TERMINAL SPECIFICATION

- 01: .050[1.27] PROFILE
- *-02: .060[1.52] PROFILE (SEE TABLE 1)

POLARIZATION

XX INDICATES POSITION TO BE OMITTED; LEAVE BLANK FOR NO OPTION

OPTIONS

- LL: LOCKING LEAD (SEE FIG. 2, SHEET 2)

ROW SPECIFICATION

- S: SINGLE

PLATING SPECIFICATION

(VALUES GIVEN ARE IN MICRO-INCHES)
 -T: MATTE TIN CONTACT AND TAIL
 -F: FLASH GOLD, 3 Au / 50 Ni MIN (USE T-1S6-XX-GF-2)

* = NOT RELEASED

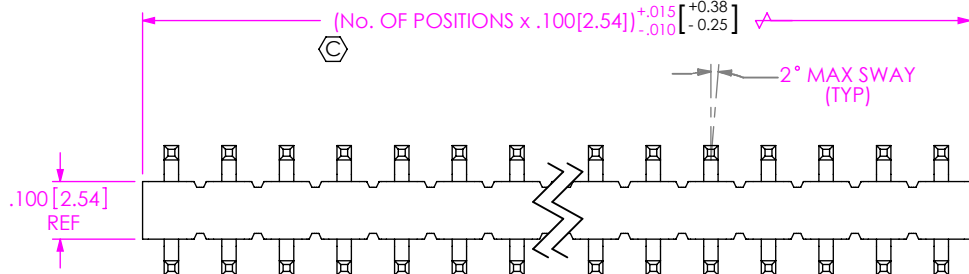
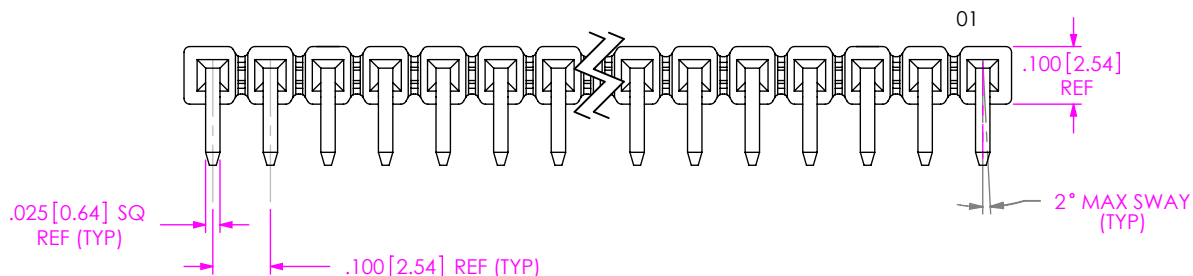
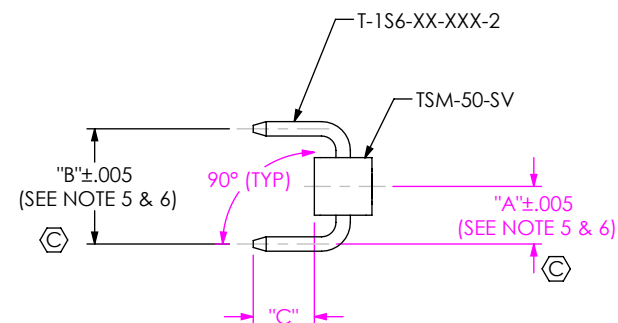


FIG 1
BTSW-1XX-XX-X-S SHOWN



XX	TERMINAL	"A"	"B"	"C"
-01	T-1S6-17-XXX-2	.100[2.54]	.200[5.08]	.106[2.69]
*-02	T-1S6-08-XXX-2	.110[2.79]	.220[5.59]	.120[3.05]

* = NOT RELEASED

UNLESS OTHERWISE SPECIFIED, DIMENSIONS ARE IN INCHES.
 TOLERANCES ARE:
 DECIMALS ANGLES
 .XX: $\pm .01[.3]$ 2°
 .XXX: $\pm .005[.13]$
 .XXXX: $\pm .0020[.051]$

PROPRIETARY NOTE

THIS DOCUMENT CONTAINS INFORMATION CONFIDENTIAL AND PROPRIETARY TO SAMTEC, INC. AND SHALL NOT BE REPRODUCED OR TRANSFERRED TO OTHER DOCUMENTS OR DISCLOSED TO OTHERS OR USED FOR ANY PURPOSE OTHER THAN THAT WHICH IT WAS OBTAINED WITHOUT THE EXPRESSED WRITTEN CONSENT OF SAMTEC, INC.



520 PARK EAST BLVD, NEW ALBANY, IN 47150
 PHONE: 812-944-6733 FAX: 812-948-5047
 e-Mail info@SAMTEC.com code 53322

DO NOT SCALE DRAWING SHEET SCALE: 3:1

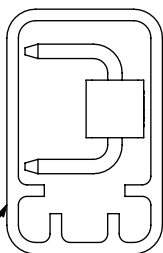
MATERIAL:
 BODIES:
 LCP UL94VO, COLOR: BLACK
 TERMINALS:
 PHOSPHOR BRONZE

DESCRIPTION:
 $.025[.64]$ SQ. SINGLE ROW, DOUBLE -RA POST ASM

DWG. NO.
BTSW-XXX-XX-X-S-XX-XX

BY: J. BROWNING 04/27/2010 SHEET 1 OF 2

TUBE VIEW



PT-1-24-01-60 (USE TP-03)
 (SEE NOTE 7)

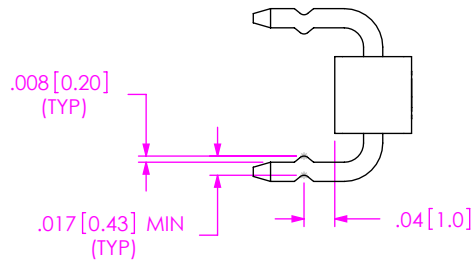
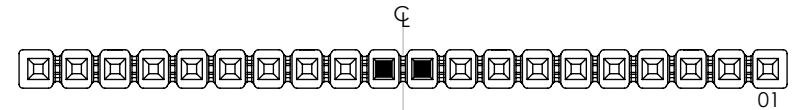
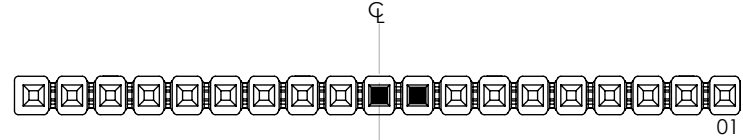


FIG 2
BTSW-1XX-XX-X-S-LL SHOWN
(SAME AS FIG 1 EXCEPT AS
SHOWN)G



EVEN POSITION PART



ODD POSITION PART

LOCKING LEAD OPTION

■ = CRIMP LOCATION

IF CRIMP POSITION IS POLARIZED, MOVE ONE POSITION TOWARD PIN 1

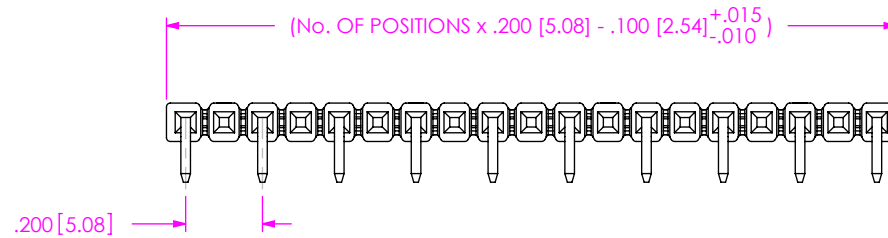
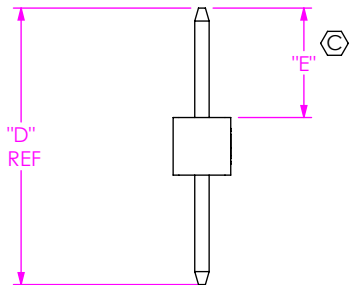


FIG 3
BTSW-210-XX-X-S SHOWN
(SAME AS FIG 1 EXCEPT AS SHOWN)



IN-PROCESS 1

TABLE 2			
XX	TERMINAL	"D"	"E"
-01	T-1S6-17-XXX-2	.480[12.19]	.190[4.82]
*-02	T-1S6-08-XXX-2	.530[13.46]	.215[5.46]

* = NOT RELEASED

F:\DWG\MISC\MKTG\BTSW-XXX-XX-X-S-XX-XX-MKT.SLDDRW

PROPRIETARY NOTE

THIS DOCUMENT CONTAINS INFORMATION CONFIDENTIAL AND PROPRIETARY TO SAMTEC, INC. AND SHALL NOT BE REPRODUCED OR TRANSFERRED TO OTHER DOCUMENTS OR DISCLOSED TO OTHERS OR USED FOR ANY PURPOSE OTHER THAN THAT WHICH IT WAS OBTAINED WITHOUT THE EXPRESSED WRITTEN CONSENT OF SAMTEC, INC.

DO NOT SCALE DRAWING

SHEET SCALE: 3:1



520 PARK EAST BLVD, NEW ALBANY, IN 47150
PHONE: 812-944-6733 FAX: 812-948-5047
e-Mail info@SAMTEC.com code 55322

DESCRIPTION:
.025 [.64] SQ. SINGLE ROW, DOUBLE -RA POST ASM

DWG. NO. **BTSW-XXX-XX-X-S-XX-XX**

BY: J. BROWNING 04/27/2010 SHEET 2 OF 2