

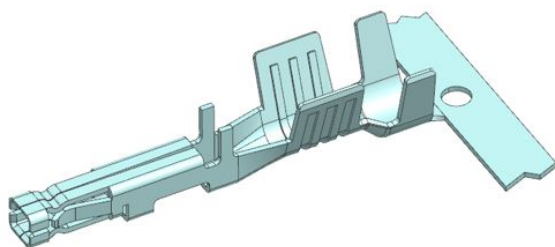


Product Change Notification

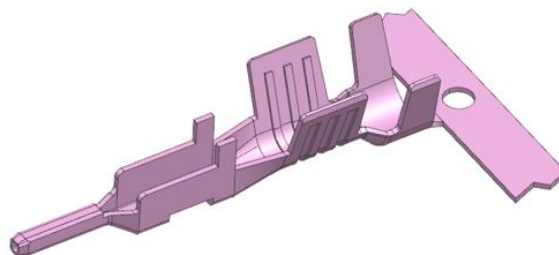
Date Issued :	September 06, 2022	PCN Number :	512558
Reason for Change :	Change Supplier		
Description of Change :	This notification is to inform you about change of supplier impacting the part(s) attached as per list, No changes will be made to product as part of this change.		
Reason for Short Notice :	Supplier Constraints		
Assessment of Change :	First Article Inspection		
Planned Implementation Date :	December 20, 2022		
Sample Availability Date:	October 02, 2022		
Internal Molex Qualification Date :	December 20, 2022		
Last date to request Samples by Customer :	December 01, 2022		
Traceability Code Markings / Date :	Date code		

Before Picture

Product Picture



76823*
172063*



105417*
105418*

After Picture

CFD- Metal 648971661&648971662

- Because current vendor Kemper stopped producing C19210 and C42500 metal alloy, we must qualify new source Boway to keep production running. Metal alloys are not changed. Boway is one of local metal supplier in China.
- Product Impact
 - no impact to fit, form or function
 - ✓ Before: C19210 WOP 0.300 X 28.00(H08)
 - ✓ After: C19210 WOP 0.300 X 28.00(H08)
 - ✓ Product will be fully qualified before it is shipped. Qualification reports will be available after below listed date.

RELEASED

You may address inquires regarding this PCN by clicking on the below link
mailto:pcn_coordinator@molex.com?subject=PCN_Notification:512558
or contact your Local Sales Engineer.

Note: While responding, please retain " PCN Notification : **PCN Notification: 512558** " in the e-mail Subject line for faster response.

[Molex, LLC](#)
2222 Wellington Court
Lisle, IL 60532
TEL (800) 786-6539
www.molex.com

PCN No Part List

512558 [0367690741](#)
512558 [0367691295](#)
512558 [0367691298](#)
512558 [0686030237](#)
512558 [0768230343](#)
512558 [0768230344](#)
512558 [1054170333](#)
512558 [1054170334](#)
512558 [1054180313](#)
512558 [1054180314](#)
512558 [1054181313](#)
512558 [1054181314](#)
512558 [1720630333](#)
512558 [1720630334](#)
512558 [1720631333](#)
512558 [1720631334](#)
512558 [2164001021](#)
512558 [2164001022](#)
512558 [2164001023](#)
512558 [2164001031](#)
512558 [2164001032](#)
512558 [2164001033](#)
512558 [2164001041](#)
512558 [2164001042](#)
512558 [2164001043](#)
512558 [2164001061](#)
512558 [2164001062](#)
512558 [2164001063](#)
512558 [2164011021](#)
512558 [2164011022](#)
512558 [2164011023](#)
512558 [2164011031](#)
512558 [2164011032](#)
512558 [2164011033](#)
512558 [2164011041](#)
512558 [2164011042](#)
512558 [2164011043](#)
512558 [2164011061](#)
512558 [2164011062](#)
512558 [2164011063](#)