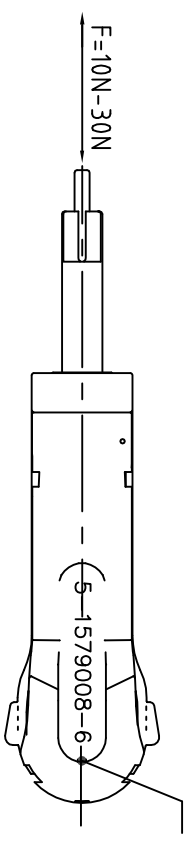
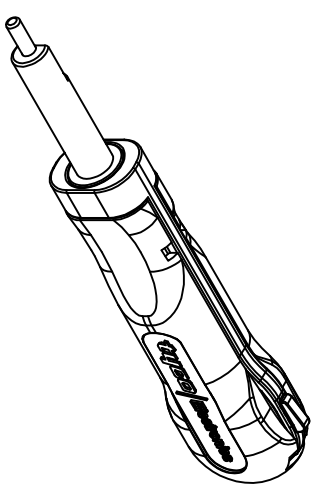
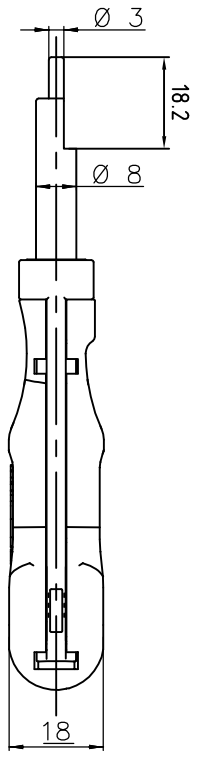
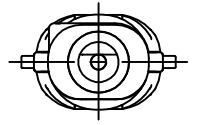
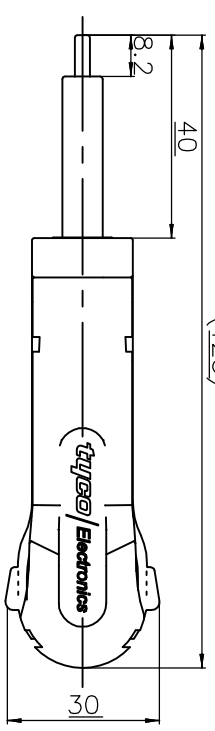


THIS DRAWING IS A CONTROLLED DOCUMENT FOR AMP INCORPORATED. IT IS SUBJECT TO CHANGE AND THE CONTROLLING ENGINEERING ORGANIZATION SHOULD BE CONTACTED FOR THE LATEST REVISION.

DIESES ZEICHNUNGSDOKUMENT WIRD DURCH AMP INCORPORATED KONTROLLIERT. AENDERUNGEN, DIE DEN TECHNISCHEN FORTSCHRITT BIETEN, SIND VORBEHALTEN. DEN JEDELS LETZTUELTIGEN ANMERKUNGSSTAND ERFAHREN SIE AUF ANFRAGE.

THIS INFORMATION IS CONFIDENTIAL AND IS DISCLOSED TO YOU ON THE CONDITION THAT NO FURTHER DISCLOSURE IS MADE BY YOU TO OTHERS. THIS INFORMATION IS THE PROPERTY OF AMP INCORPORATED. IT IS SUBJECT TO CHANGE WITHOUT NOTICE AND AUTHORIZATION FROM AMP INCORPORATED. - 63825 LAMEN

(125)



ITEM NUMBER
Art-Nr H=3mm

APPLICATION RANGE / Anwendungsbereich :
 CONTACT MCP: 968855, 968857
 HOUSING MCP: 1801286, 1803226

FREIWASSLERANZEN NACH DIN 7168 (WERTE IN MM)
 1) ANZUGEND VON DIN 7168 z) LAGER DES VERBUNDENEN SCHWELLS

RECHNUNG 1)	UBER	0,5	3	6	30	180	400
RECHNUNG 2)	UNTER	0,3	3	6	30	180	400
RECHNUNG 3)	MITTEL	1,0	1	2	6	30	180
RECHNUNG 4)	MITTEL	2,0	1	2	6	30	180
RECHNUNG 5)	MITTEL	3,0	1	2	6	30	180
RECHNUNG 6)	MITTEL	4,0	1	2	6	30	180
RECHNUNG 7)	MITTEL	5,0	1	2	6	30	180

VERWANDLUNGSZUFACHEN 1) z) z1 z2 z3 z4 z5 z6 z7 z8 z9

GENERAL TOLERANCES ACC. TO DIN 7168 (VALUES IN MM)
 1) ANZUGEND VON DIN 7168 z) LAGER DES VERBUNDENEN SCHWELLS

RECHNUNG 1)	UBER	0,5	3	6	30	180	400
RECHNUNG 2)	UNTER	0,3	3	6	30	180	400
RECHNUNG 3)	MITTEL	1,0	1	2	6	30	180
RECHNUNG 4)	MITTEL	2,0	1	2	6	30	180
RECHNUNG 5)	MITTEL	3,0	1	2	6	30	180
RECHNUNG 6)	MITTEL	4,0	1	2	6	30	180
RECHNUNG 7)	MITTEL	5,0	1	2	6	30	180

VERWANDLUNGSZUFACHEN 1) z) z1 z2 z3 z4 z5 z6 z7 z8 z9

FINISH: -
 DIMENSIONS: mm
 TOLERANCES UNLESS SPECIFIED:
 h, ISO 2768 - mH - E
 H, ISO 2768 - mS
 S, ISO 2768 - mS

NAME	S. Sams 1 a g	DATE	01.12.2008	REV	1 OF 1
SCALE	1:1	DRAWING NO	C-5-1579008-6	REV	B1
ENTRIEGELUNGSWERKZEUG	EXTRACTION TOOL				
BRANDNAME	Tyco Electronics Tyco Electronics AMP GmbH				
BRANDNAME	64623 Bensheim (Germany)				
HEAT TREAT	0,000kg				

AMP 3306-7 REV 23E1195 8 7 6 5 4 3 2 1