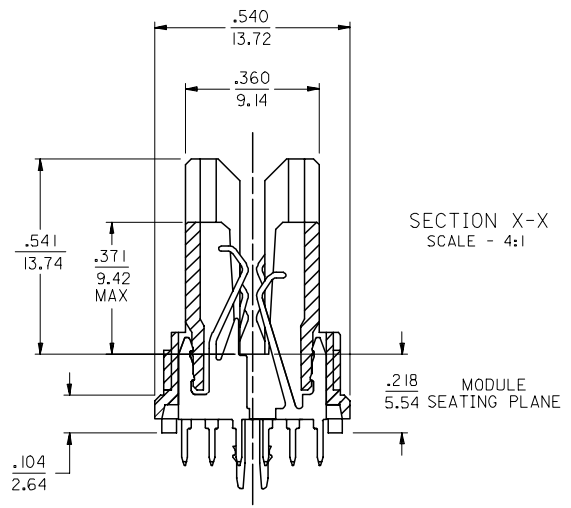
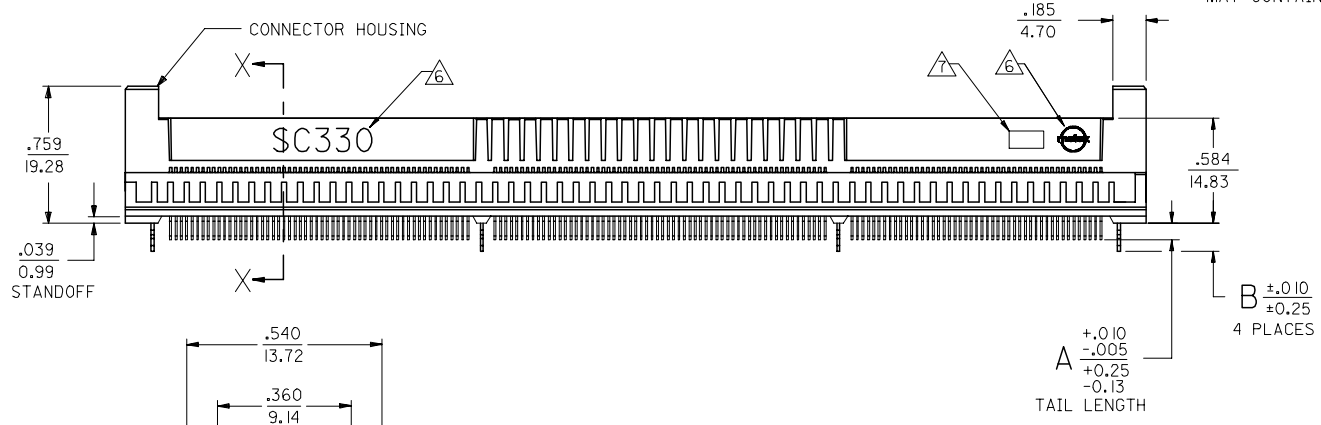
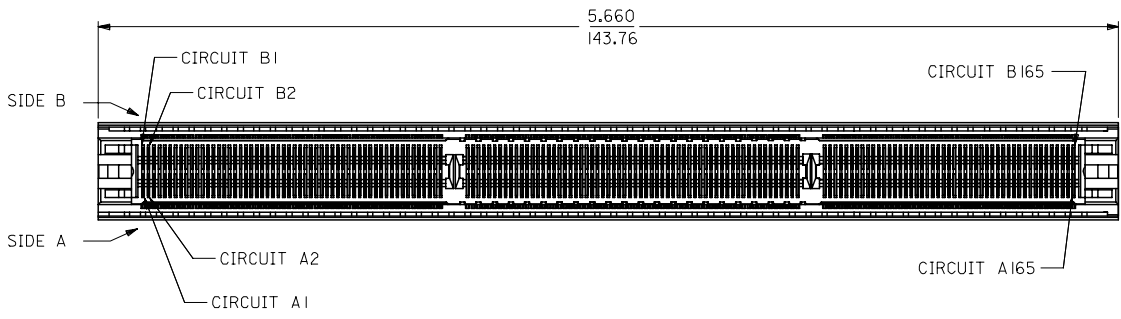


13 12 11 10 9 8 7 6 5 4 3 2 1

J  
I  
H  
G  
F  
E  
D  
C  
B  
A

- NOTES:**
- MATERIALS:**  
HOUSING - LCP, 30% GLASS FILLED, 94-VO, BLACK.  
TERMINALS - PHOSPHOR BRONZE.  
METAL FORKLLOCKS - PHOSPHOR BRONZE.
  - FINISH:**  
TERMINALS - .000030/0.00076 MINIMUM GOLD IN THE CONTACT AREA AND .000075/0.0019 MINIMUM TIN IN SOLDER TAIL AREA OVER .000050/0.0013 MINIMUM NICKEL OVERALL.  
METAL FORKLLOCKS - .00008/0.002 MINIMUM TIN OVERALL.
  - PRODUCT SPECIFICATION PS-71109-9990 APPLIES.
  - CARD SLOT ACCEPTS .062 +.007/-.005 P.C. BOARD.
  - THE RECOMMENDED PLATING SPECIFICATION FOR THE MATING PC BOARD IS .000030/0.0076 MINIMUM GOLD OVER .000075/0.0019 MINIMUM NICKEL.
  - "SC330" AND MOLEX LOGO SHALL APPEAR ON BOTH SIDES OF HOUSING AND LOCATED APPROXIMATELY AS SHOWN.
  - FOUR DIGIT DATE CODE (YR/WK) SHALL BE LOCATED APPROXIMATELY AS SHOWN.
  - THE PRIMARY SHIPPING CARTON WILL BE LABELED "COMPLIANT TO ROHS DIRECTIVE 2002/95/EC AND ELV ANNEX II OF DIRECTIVE 2000/53/EC". CARTONS WITHOUT THIS LABEL MAY CONTAIN PRODUCT WITH LEAD.



71109-5007	.140/3.56	.155/3.94
71109-5006	.115/2.92	.155/3.94
71109-5005	.090/2.29	.155/3.94

MAT'L NUMBER	A	B
--------------	---	---

MODIFY 71109-5007	DESCRIPTION
EC NO: UCP2006-1372	
DRWNS:BARRA 2005/12/19	
CHKD:DMORGAN 2006/01/05	
APPR:SMILLER 2006/01/06	

QUALITY SYMBOLS	GENERAL TOLERANCES (UNLESS SPECIFIED)	DIMENSION STYLE
▽=0	mm INCH	IN/MM
▽=0	4 PLACES ± --- ± ---	DRAWN BY DATE
	3 PLACES ± --- ± .005	NELSON 1997/06/20
	2 PLACES ± 0.13 ± ---	CHECKED BY DATE
	1 PLACE ± --- ± ---	NELSON 1997/06/20
	ANGULAR ±1/2°	APPROVED BY DATE
		FUNCK 1997/06/20
	DRAFT WHERE APPLICABLE MUST REMAIN WITHIN DIMENSIONS	MATERIAL NO. DOCUMENT NO.
		SEE TABLE SD-71109-503

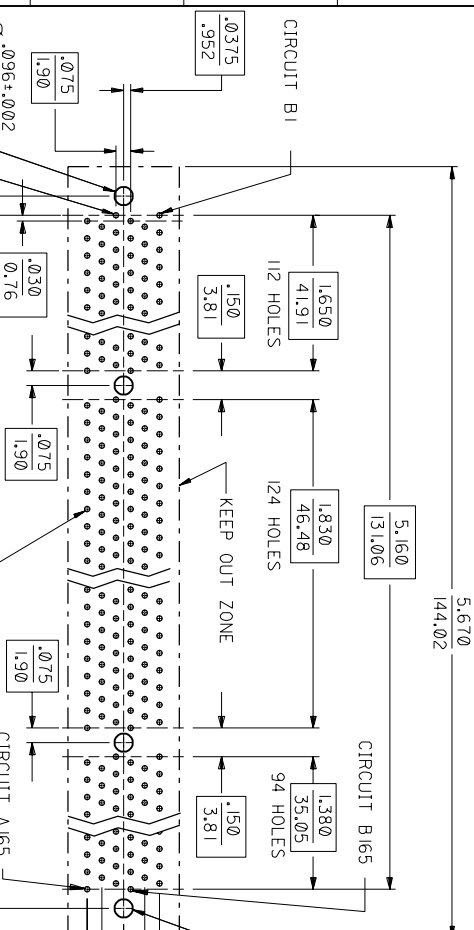
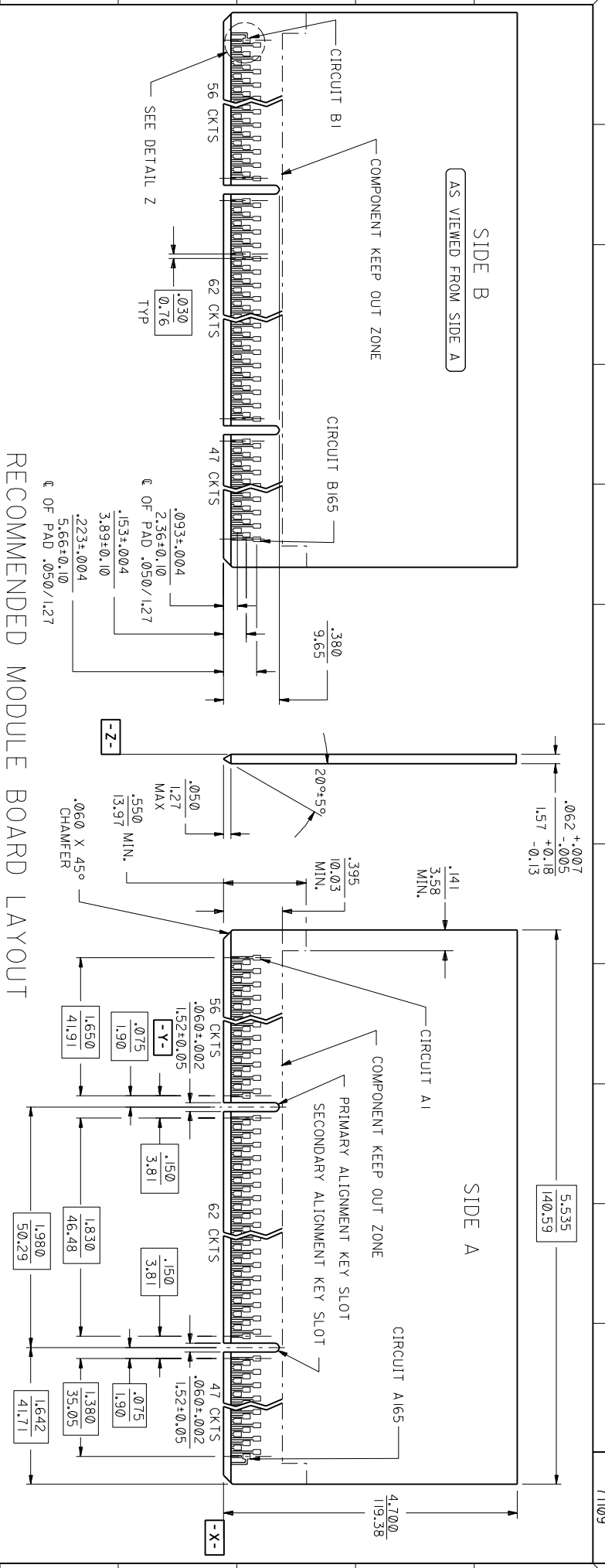
SCALE	DESIGN UNITS	THIRD ANGLE PROJECTION
2:1	INCH	⊙
SALES ASSEMBLY		
SC330 HISPEC CONNECTOR		
W/METAL PEGS		
MOLEX INCORPORATED		
MATERIAL NO. DOCUMENT NO.		SHEET NO.
SEE TABLE SD-71109-503		1 OF 2
THIS DRAWING CONTAINS INFORMATION THAT IS PROPRIETARY TO MOLEX INCORPORATED AND SHOULD NOT BE USED WITHOUT WRITTEN PERMISSION		

2	F
1	J
SHT	REV

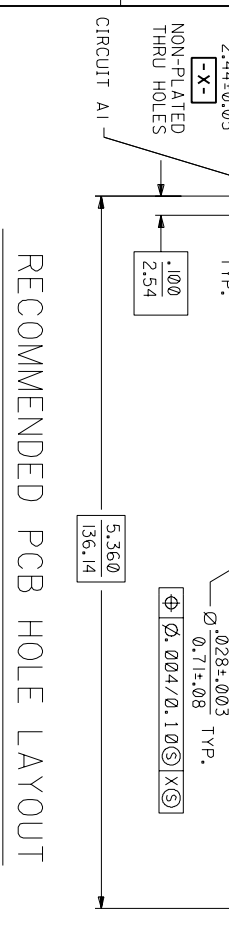
J  
I  
H  
G  
F  
E  
D  
C  
B  
A

12 11 10 9 8 7 6 5 4 3 2 1

### RECOMMENDED MODULE BOARD LAYOUT



### RECOMMENDED PCB HOLE LAYOUT



QUALITY SYMBOLS	GENERAL TOLERANCES: (UNLESS SPECIFIED)	SCALE	DESIGN UNITS	THIRD ANGLE PROJECTION	DIMENSIONS:	SHT	REV
MAJOR	MM INCH	2:1	MM INCH	<input checked="" type="checkbox"/> <input type="checkbox"/>	MM INCH ONLY CAD ONLY		
MINOR	MM INCH						
CRITICAL	MM INCH						
$C/-0$	MM INCH						

DESCRIPTION	QUALITY SYMBOLS
MAJOR	$\nabla$
MINOR	$\triangle$
CRITICAL	$\blacktriangle$
$C/-0$	$\nabla$

NO.	DATE	BY	CHK'D	APP'R	REV
1	06/20/97	NELSON			F
2	06/20/97	NELSON			
3	06/20/97	NELSON			
4	06/20/97	NELSON			

TITLE:	DRAWING NO.	SHEET NO.
SALES ASSEMBLY	SD-71109-503	2
SC330 "HiSpec" CONNECTOR		
W/METAL FORKLOCKS		
MOLEX INCORPORATED		

DESCRIPTION	REVISIONS
NON-PLATED THRU HOLES	
CIRCUIT A1	
CIRCUIT B1	
CIRCUIT B165	
CIRCUIT A165	