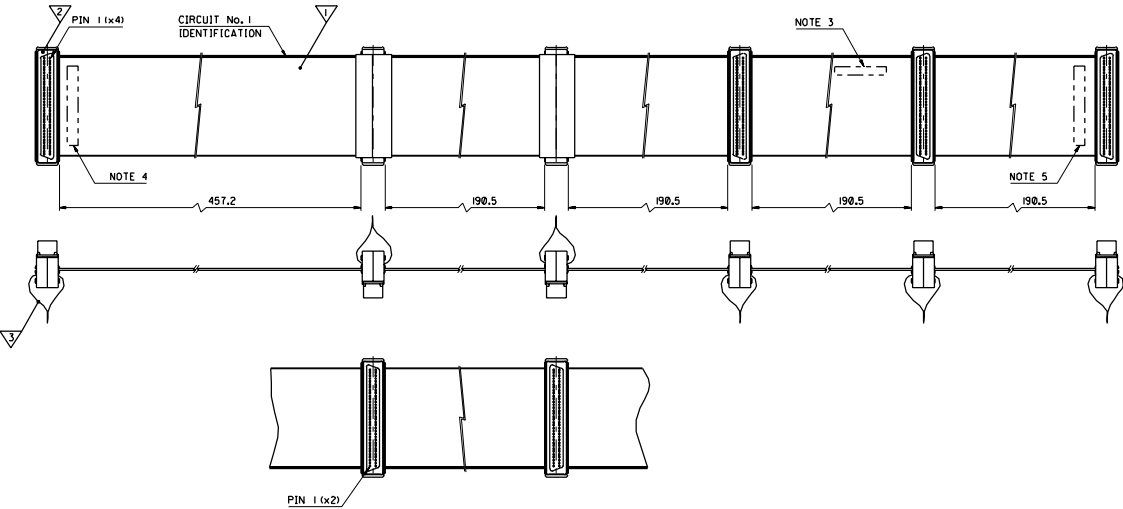


92303-0004
SDA-92303-000



SHT. 1 OF 1		MRI- SDA-92303-0004			
MODIFICATION RECORD INDEX					
ECN	ISS.	DATE	INIT.	SHTS. AFFECTED	DESCRIPTION OF MOD.
E70397	A	96.12.20	DAB	1	ORIGINAL ISSUE
E70404	A1	96.01.10	DAB	1	CUSTOMER P/N MOD
E70477	A2	96.01.30	MCUR	1	ADDED CABLE SPEC
E71034	A3	97.03.25	MCUR	1	UPDATE TO DWG TO MATCH CUST. DWG.
E2000-019T	A4	99.09.2	DMCN	1	CHANGE IN P/N

ITEM	COMPONENT	SUPPLIER	DESCRIPTION	QUANTITY	NOTE
▽	99026-0136	MOLEX	68 CCT RIBBON CABLE 30 AWG (AMPHENOL 191-3005-068)	1282mm	2,3,4,5
▽	70498-5068	MOLEX	SCSI 68 CCT CONNECTOR WITH STRAIN RELIEF	6	1,6
▽		MOLEX	PULL TAB 34	6	

NOTES:

- SEE PRODUCT SPECIFICATION PSX79058
- SEE CABLE SPECIFICATION 99027-0022
- PRINT DELL P/N AND REVISION "B4546-A00" APPROXIMATELY WHERE SHOWN. TEXT HEIGHT 3.2 AND AFTER ELECTRICAL TESTING PRINT "EL TEST OK"
- PRINT "CNTL" APPROXIMATELY WHERE SHOWN. TEXT HEIGHT 3.2
- PRINT "DRIVE" APPROXIMATELY WHERE SHOWN. TEXT HEIGHT 3.2
- HARNESS TO BE 100% ELECTRICALLY TESTED
- ATTACH UL LABEL TO EVERY BOX

CHANGE IN P/N
2000-019T
DMCN 99/09/0

1:1 x
MCURRAN 97/03/25
BENRIGHT 99/09/13
JHORGAN 99/09/13

68CCT
RIBBON CABLE

1/2

92303-0004 SDA-92303-0004 1 OF 1

LEVEL CHART

1	17	33	49
2	18	34	50
3	19	35	51 LEVEL INDEX
4	20	36	52 RESERVED
5	21	37	53 RESERVED
6	22	38	54 Inspection Balloons
7	23	39	55 DIMENSIONS
8	24	40	56 TABLES/CHARTS
9	25	41	57 REVISION TEXT & MRI
10	26	42	58 Notes/text - English
11	27	43	59 Bill of materials
12	28	44	60 notes/text - german
13	29	45	61
14	30	46	62 notes/text - french
15	31	47	63 RESERVED
16	32	48	