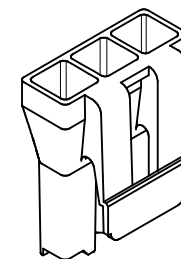
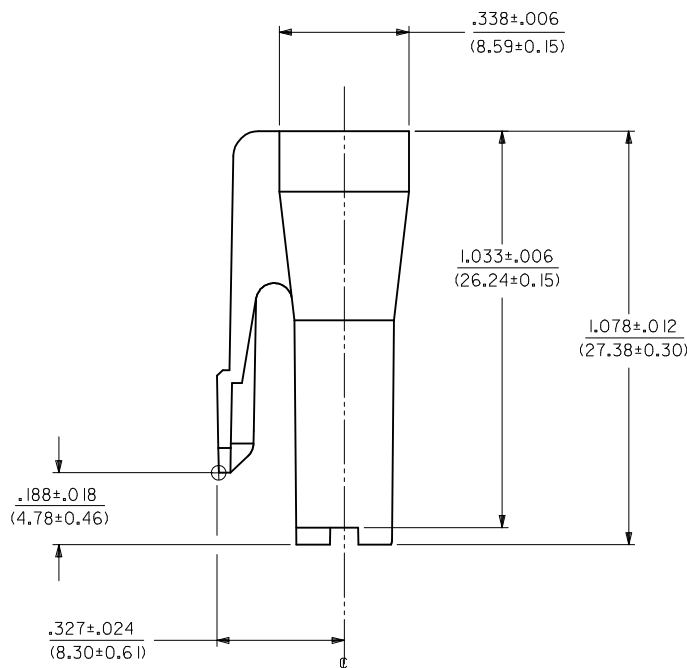


	ITEM NUMBER	MATERIAL	COLOR
	43335-1003	A	NATURAL
	43335-2003	B	BLACK
OBSOLETE	43335-3003	A	RED
OBSOLETE	43335-4003	A	BLUE
	43335-7003	D	BLACK

NOTES:

- MATERIAL: A: NYLON, PA66, UL94V-2, COLOR: SEE CHART.  
B: PA66 NYLON, UL94V-0.  
D: NYLON, UL94V-2, COLOR: BLACK, IEC 60335-1 GLOW WIRE CAPABLE.
- FINISH: NONE
- PRODUCT SPECIFICATION: PSX-43335-9999
- PACKAGING SPECIFICATION: PK-43335-001.
- THIS CONNECTOR HOUSING FOR USE WITH 43375-\*\*\*\* TERMINALS.
- THIS CONNECTOR HOUSING WILL MATE TO A-43160-\*\*\*3, 43180-\*\*\*3, AND 43384-\*\*\*3 HOUSINGS.
- SEE SDES-43335-9004 FOR REQUIREMENTS FOR THE MATING INTERFACE.
- PARTS CONFORM TO CLASS 'B' REQUIREMENTS OF COSMETIC SPECIFICATION PS-45499-002 EXCEPT MATERIAL OPTION 'B' MEETS CLASS 'C' REQUIREMENTS FOR SINK AND DISCOLORATION.



43335-\*003  
(SCALE 2:1)

<b>CORRECT TOLERANCE</b> EC NO: UCP2014-5424 DRWN:JDOX 2014/06/26 CHKD:ANDERSON 2014/06/26 APPR:FSMLTH 2014/07/09	QUALITY SYMBOLS 	GENERAL TOLERANCES (UNLESS SPECIFIED) <table border="1"> <thead> <tr> <th></th> <th>mm</th> <th>INCH</th> </tr> </thead> <tbody> <tr> <td>4 PLACES</td> <td>± .005</td> <td>± .0005</td> </tr> <tr> <td>3 PLACES</td> <td>± .005</td> <td>± .0005</td> </tr> <tr> <td>2 PLACES</td> <td>± 0.13</td> <td>± .010</td> </tr> <tr> <td>1 PLACE</td> <td>± 0.25</td> <td>± .010</td> </tr> <tr> <td>0 PLACE</td> <td>±</td> <td>±</td> </tr> </tbody> </table>		mm	INCH	4 PLACES	± .005	± .0005	3 PLACES	± .005	± .0005	2 PLACES	± 0.13	± .010	1 PLACE	± 0.25	± .010	0 PLACE	±	±	DIMENSION STYLE <b>IN/MM</b>	SCALE <b>4:1</b>	DESIGN UNITS <b>INCH</b>	THIRD ANGLE PROJECTION 
		mm	INCH																					
	4 PLACES	± .005	± .0005																					
	3 PLACES	± .005	± .0005																					
2 PLACES	± 0.13	± .010																						
1 PLACE	± 0.25	± .010																						
0 PLACE	±	±																						
DRAWN BY MAB	DATE 1995/08/15	TITLE <b>3-CKT RECEPTACLE HOUSING .125X.020 FLAT BLADE SYSTEM W/TPA</b>																						
CHECKED BY KBP	DATE 1995/08/15																							
APPROVED BY RAS	DATE 1995/08/15	MATERIAL NO. <b>SEE CHART</b>	DOCUMENT NO. <b>SD-43335-*003</b>	SHEET NO. <b>1 OF 1</b>																				