

# I.168 SOFT | Knurled handle

Soft-touch technopolymer

# EGH.SOFT | Cylindrical lobe handle

Soft-touch technopolymer

**METRIC**

**SOFT** **RoHS** **PA** **TPE** **+176 °F**  
**-4 °F**

**MATERIAL**

Glass-fibre reinforced polyamide based (PA) technopolymer coated with "soft-touch" thermoplastic elastomer (TPE), hardness 90 Shore A, black colour, matte finish. Produced from FDA compliant raw material (FDA CFR.21 and EU 10/2011).

**STANDARD EXECUTION**

Brass boss, plain blind hole.  
Fitting to the shaft by means of a black-oxide steel socket set screw according to ISO 4029 (grub screws with hexagon socket and cup end).

**FEATURES AND APPLICATIONS**

The coating, with "soft-touch" elastomer, improves the grip even in the presence of oils, greases and sweat from the hand. For this reason it is suitable for fitness machines, tools and machines for gardening and goods transport, high-precision instruments and disability aids.

**METRIC**

**SOFT** **RoHS** **PP** **TPE** **+176 °F**  
**+32 °F**

**MATERIAL**

High-resilience polypropylene based (PP) technopolymer, coated with "soft-touch" thermoplastic elastomer (TPE) chemically bonded, hardness 70 Shore A, black colour, matte finish. Produced from FDA compliant raw material (FDA CFR.21 and EU 10/2011).

**STANDARD EXECUTION**

Plain blind hole.  
The elastic coupling, by press-fit assembly on h9 tolerance drawn stock bars, is not affected by vibrations and prevents the handle from slipping off (see Technical data on page A-12).

**FEATURES AND APPLICATIONS**

The coating, with "soft-touch" elastomer, improves the grip even in the presence of oils, greases and sweat from the hand. For this reason it is suitable for fitness machines, tools and machines for gardening and goods transport, high-precision instruments and disability aids.

**ASSEMBLY INSTRUCTIONS**

Fit the handle onto slight chamfered shaft end and push as far as possible by hand or by means of a small press. Alternatively it is possible to tap the handle with a plastic or wooden mallet until firmly in place. In this case we strongly recommend to use a cloth or other suitable soft material over the product to avoid any surface damage.

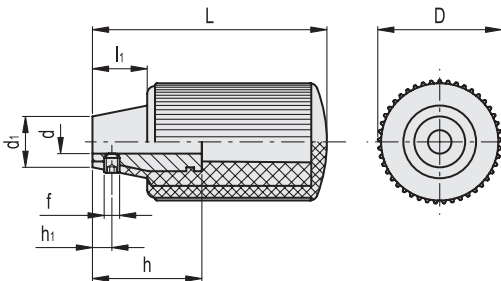


ELESA Original design



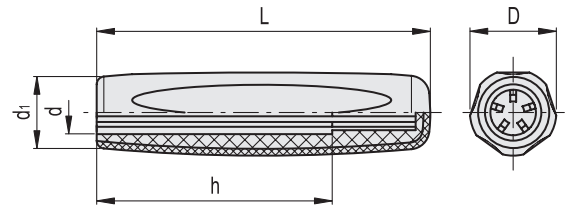
ERGOSTYLE® ELESA Original design

Conversion Table	
1 mm = 0,039 inch	
L	
mm	inch
60	2.36
85	3.35



**METRIC**

Code	Description	D	L	dH7	d1	h	h1	l1	f	⚖
120402	I.168/60 B-6-SOFT	30	60	6	13	28	5	14	M4	59



**METRIC**

Code	Description	D	L	d	d1	h	⚖
286151-C1	EGH.85 N-8-C1-SOFT	22	85	8	18	60	30

Fixed & Revolving handles