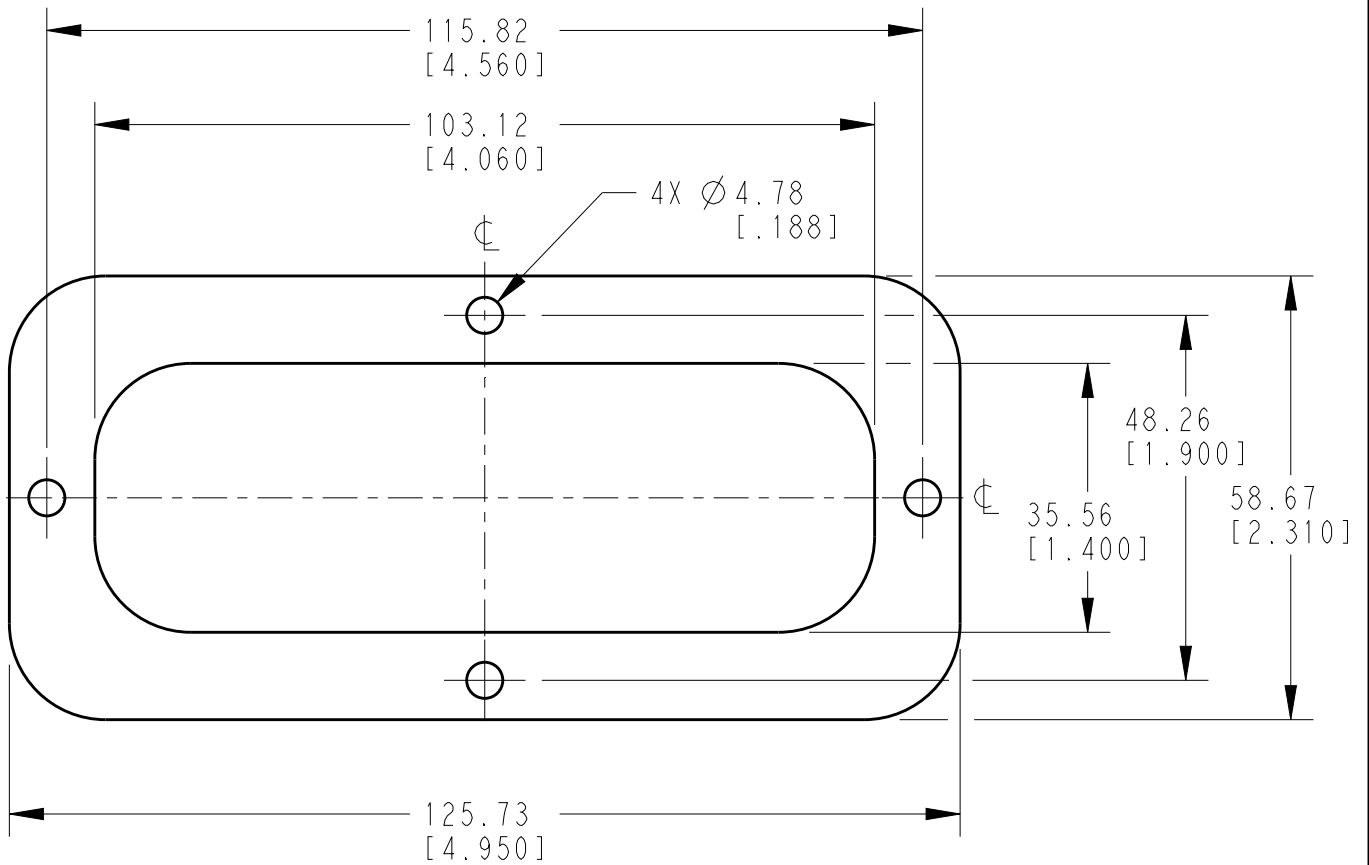


LOC	DIST	REVISIONS				
P	LTR	DESCRIPTION	DATE	DWN	APVD	
	A	NEW RELEASE PER ECO-14-009839	07JUL2014	DM	DM	
	A1	REVISED PER ECO-16-014360	03OCT2016	JA	DM	




4. THIS ACCESSORY PART IS PROVIDED WITHOUT TYPICAL TRANSPORTATION INDUSTRY PROCESS CONTROLS. NO VALIDATION TESTING HAS BEEN PERFORMED. CUSTOMER IS RESPONSIBLE FOR DETERMINING PRODUCT PERFORMANCE AND SUITABILITY FOR APPLICATION.
3. THICKNESS: 3.18 [.125].
2. TEMPERATURE RATING: -57°C TO +107°C [-70°F TO +225°F).
1. THIS PART IS USED ON DRC12-70PX(E)-XXXX RECEPTACLE WHERE X=A,B,C,D KEYS AND XXXX=MODIFICATION.

NOTES:

TE INTERNAL PN	DEUTSCH PN
DRC70-GKT	DRC70-GKT

THIS DRAWING IS UNPUBLISHED. BY TE CONNECTIVITY. ALL RIGHTS RESERVED. 2016

DIMENSIONS: mm [INCH]	DWN D.MEYER	07JUL2014	MATERIAL	CLD CELL SPONGE	FINISH	BLACK
	CHK D.HASIBUAN	07JUL2014	 TE Connectivity			
TOLERANCES UNLESS OTHERWISE SPECIFIED:	APVD D.MEYER	07JUL2014				
0 PLC ±	PRODUCT SPEC		SIZE	CAGE CODE	DRAWING NO	RESTRICTED TO
1 PLC ±	APPLICATION SPEC		A 4	4AFU8	©=DRC70-GKT	-
2 PLC ±0.63 [.025]			WEIGHT	0.907g		
3 PLC ±			CUSTOMER DRAWING	SCALE	1 : 1	SHEET 1 OF 1
4 PLC ±						REV A1
ANGLES ±0° 30' 0"						