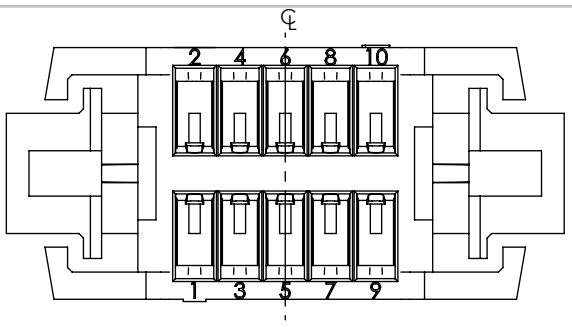


DO NOT SCALE FROM THIS PRINT



DESIGNED & DIMENSIONED IN MILLIMETERS

ISD1-XX

ROW SPECIFICATION
-D: DOUBLE ROW

No. OF POSITIONS (PER ROW)
-02 THRU -20

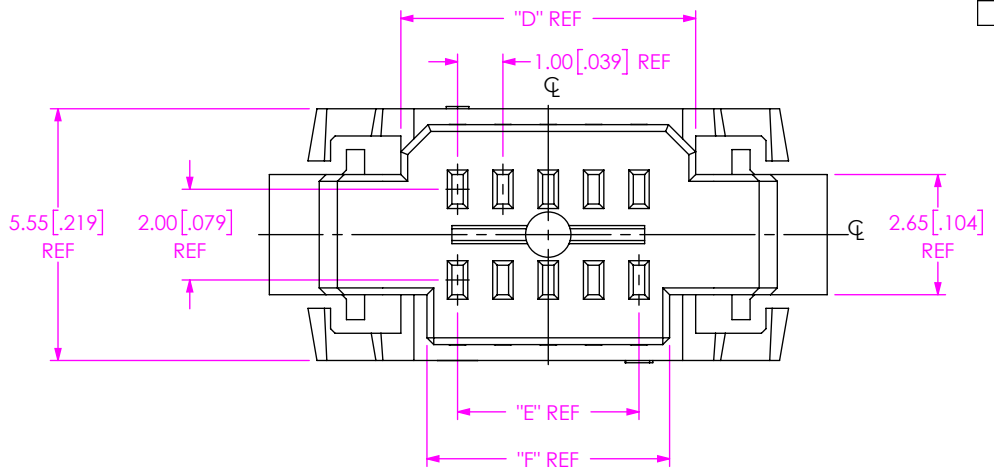
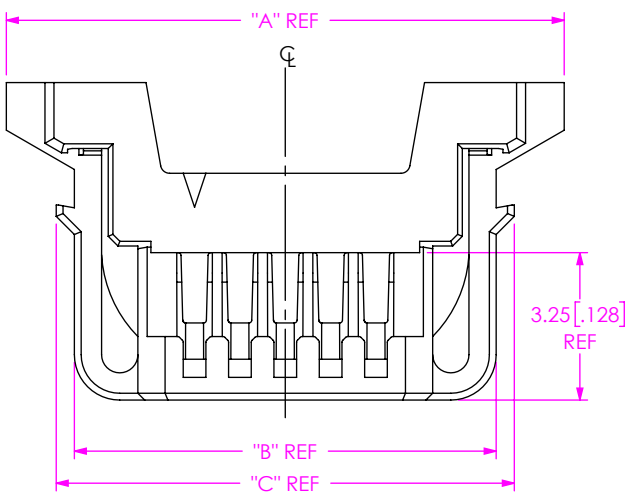
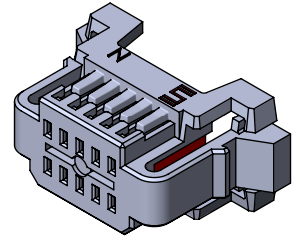


TABLE 1

No. OF POS	"A"	"B"	"C"	"D"	"E"	"F"
-02	9.30 [0.366]	6.30 [0.248]	7.10 [0.280]	3.50 [0.138]	1.00 [0.039]	2.35 [0.093]
-03	10.30 [0.406]	7.30 [0.287]	8.10 [0.319]	4.50 [0.177]	2.00 [0.079]	3.35 [0.132]
-04	11.30 [0.445]	8.30 [0.327]	9.10 [0.358]	5.50 [0.217]	3.00 [0.118]	4.35 [0.171]
-05	12.30 [0.484]	9.30 [0.366]	10.10 [0.398]	6.50 [0.256]	4.00 [0.157]	5.35 [0.211]
-06	13.30 [0.524]	10.30 [0.406]	11.10 [0.437]	7.50 [0.295]	5.00 [0.197]	6.35 [0.250]
-07	14.30 [0.563]	11.30 [0.445]	12.10 [0.476]	8.50 [0.335]	6.00 [0.236]	7.35 [0.289]
-08	15.30 [0.602]	12.30 [0.484]	13.10 [0.516]	9.50 [0.374]	7.00 [0.276]	8.35 [0.329]
-09	16.30 [0.642]	13.30 [0.524]	14.10 [0.555]	10.50 [0.413]	8.00 [0.315]	9.35 [0.368]
-10	17.30 [0.681]	14.30 [0.563]	15.10 [0.594]	11.50 [0.453]	9.00 [0.354]	10.35 [0.407]
-11	18.30 [0.720]	15.30 [0.602]	16.10 [0.634]	12.50 [0.492]	10.00 [0.394]	11.35 [0.447]
-12	19.30 [0.760]	16.30 [0.642]	17.10 [0.673]	13.50 [0.531]	11.00 [0.433]	12.35 [0.486]
-13	20.30 [0.799]	17.30 [0.681]	18.10 [0.713]	14.50 [0.571]	12.00 [0.472]	13.35 [0.526]
-14	21.30 [0.839]	18.30 [0.720]	19.10 [0.752]	15.50 [0.610]	13.00 [0.512]	14.35 [0.565]
-15	22.30 [0.878]	19.30 [0.760]	20.10 [0.791]	16.50 [0.650]	14.00 [0.551]	15.35 [0.604]
-16	23.30 [0.917]	20.30 [0.799]	21.10 [0.831]	17.50 [0.689]	15.00 [0.591]	16.35 [0.644]
-17	24.30 [0.957]	21.30 [0.839]	22.10 [0.870]	18.50 [0.728]	16.00 [0.630]	17.35 [0.683]
-18	25.30 [0.996]	22.30 [0.878]	23.10 [0.909]	19.50 [0.768]	17.00 [0.669]	18.35 [0.722]
-19	26.30 [1.035]	23.30 [0.917]	24.10 [0.949]	20.50 [0.807]	18.00 [0.709]	19.35 [0.762]
-20	27.30 [1.075]	24.30 [0.957]	25.10 [0.988]	21.50 [0.846]	19.00 [0.748]	20.35 [0.801]

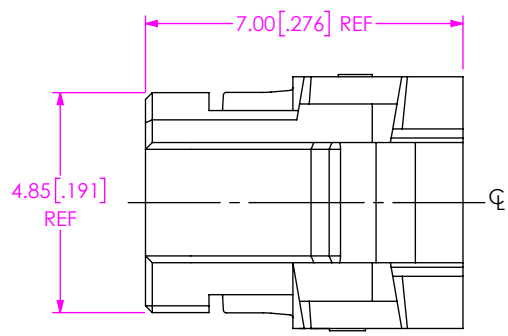



FIG 1
ISD1-05 SHOWN

UNLESS OTHERWISE SPECIFIED, DIMENSIONS ARE IN MILLIMETERS. TOLERANCES ARE: DECIMALS ANGLES X.X: ±0.3 X.XX: ±0.05 X.XXX: ±0.025	* PROPRIETARY NOTE * THIS DOCUMENT CONTAINS CONFIDENTIAL AND PROPRIETARY INFORMATION AND ALL DESIGN, MANUFACTURING, REPRODUCTION, USE, PATENT RIGHTS AND SALES RIGHTS ARE EXPRESSLY RESERVED BY SAMTEC, INC. THIS DOCUMENT SHALL NOT BE DISCLOSED, IN WHOLE OR PART, TO ANY UNAUTHORIZED PERSON OR ENTITY NOR REPRODUCED, TRANSFERRED OR INCORPORATED IN ANY OTHER PROJECT IN ANY MANNER WITHOUT THE EXPRESS WRITTEN CONSENT OF SAMTEC, INC.	 520 PARK EAST BLVD., NEW ALBANY, IN 47150 PHONE: 812-944-6733 FAX: 812-948-5047 e-Mail: info@SAMTEC.com code 55322