

6

5

4

3

2

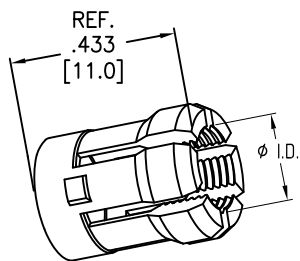
1

APPROVED: \_\_\_\_\_

DATE: \_\_\_\_\_ TITLE: \_\_\_\_\_

Rev	AWO #	Description	Date	Appr
-		RELEASED	8/16/21	

MMI-P1M-COL-XX



CABLE COLLET

CABLE COLLET SIZE	
42	= 3.2mm ~ 4.2mm ID
52	= 4.2mm ~ 5.2mm ID
62	= 5.2mm ~ 6.2mm ID
72	= 6.2mm ~ 7.2mm ID

D

D

C

C

B

B

A

A

SPECIFICATIONS:

Material:  
Brass, Natural Chrome plated

Environmental:  
Lead free, RoHS compliant



UNLESS OTHERWISE SPECIFIED ALL DIMENSIONS ARE INCHES [MM] TOLERANCES: EXCEPT AS NOTED INCHES HOLES .X ± .10 ∅.X ± .10 .XX ± .020 ∅.XX ± .015 .XXX ± .015 ∅.XXX ± .010		<b>ADAM TECH</b> 909 Rahway Avenue, Union, NJ 07083 Phone: 908-687-5000 Fax: 908-687-5710	
APPROVALS		DATE	
DRAWN	SS	8/16/21	
CHECKED	SS	8/16/21	
APPROVED			
TITLE: PUSH-PULL METAL COLLET FOR MALE METAL PLUG SIZE 1, IP50			
SIZE	PART NO.	REV.	
X	MMI-P1M-COL-XX	-	
REF:	SXXXXXX	SCALE:	NTS SHEET 1 OF 1

6

5

4

3

2

1