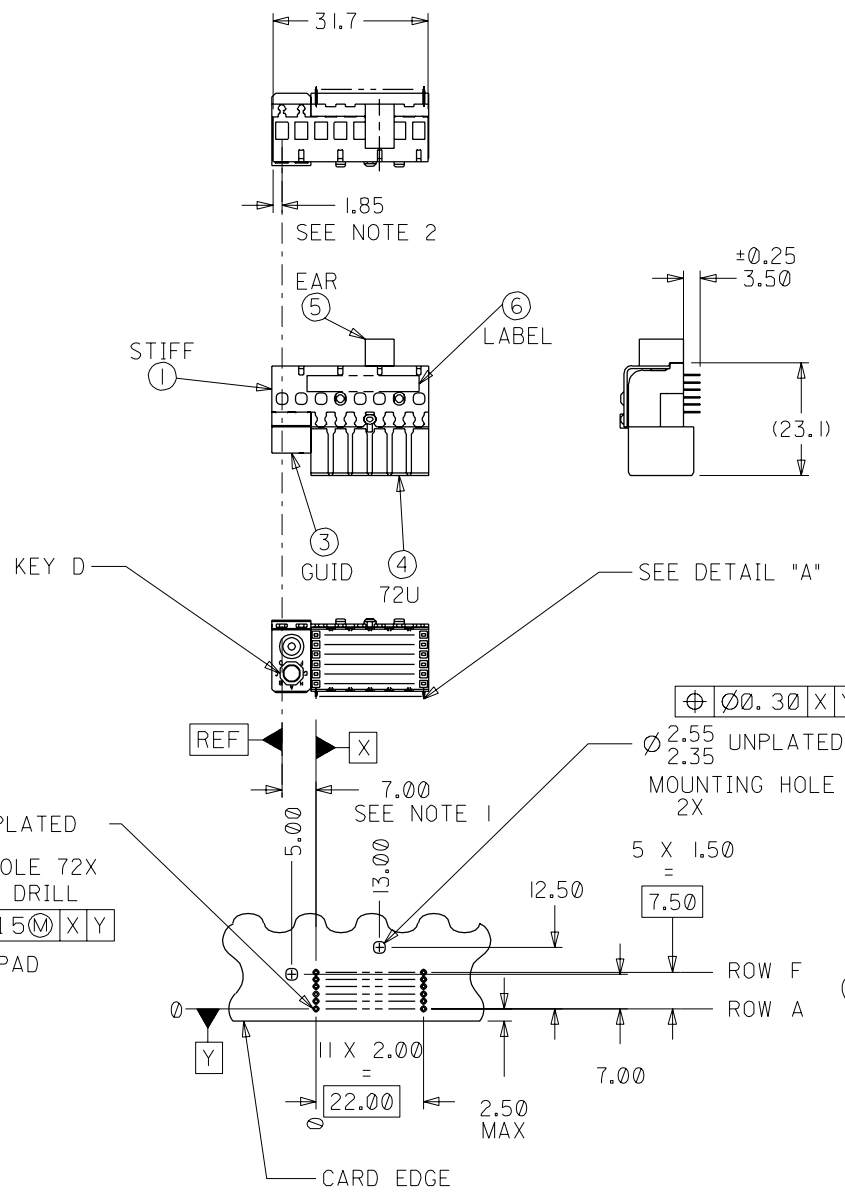
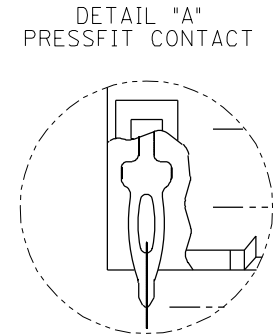
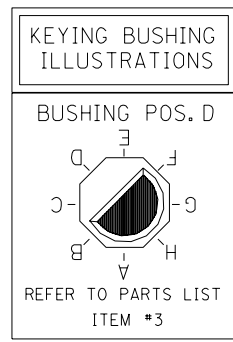


ITEM	QTY	PART NUMBER	DESCRIPTION
1	1	73664-0032	STIFFENER
2	1	73726-0000	MOUNTING SCREW
3	2	73660-3000	GUIDE MODULE, KEY D
4	1	73632-0330	72 POS. SIGNAL, UNSHIELDED, PRESSFIT
5	1	73665-0000	MOUNTING EAR
6	1	73728-0000	CUSTOM LABEL

NOTES:
 1. DISTANCE FROM "REF" PLANE TO FIRST SIGNAL CONTACT.
 2. DISTANCE FROM "REF" PLANE TO LEFT END OF STIFFENER.
 3. DIMENSIONS ARE IN MILLIMETERS.
 4. THIS PRODUCT CONFORMS TO MOLEX PRODUCT SPECIFICATION PS-73670-9999.
 5. NON-TOLERANCED DIMENSIONS ARE BASIC.
 6. PLATING: SELECTIVE GOLD (Au) IN CONTACT AREA, 0.000076mm MIN. THICKNESS, SELECTIVE TIN/LEAD (Pb/Sn) ON PCB TAILS, NICKEL OVERALL.
 7. PACKAGED PER PK-70873-0820.



DETAIL "B"
KEYING BUSHING LOCATIONS



CUSTOMER: CISCO

RELEASED FOR PROD
 ECR UDT2000-0573
 BINGHAM 99/12/16

MFG.	SH.	REV.	LTR.	REVISIONS
------	-----	------	------	-----------

DIMENSIONS SHOWN (METRIC) INCH	
UNLESS OTHERWISE SPECIFIED TOLERANCES: ANGULAR = 1/2°	
3 PLACE	± N/A
2 PLACE	± N/A
1 PLACE	± ---

▽ = 0	▼ = 0	REVISE ONLY ON CAD SYSTEM	
TITLE		HDM PRESSFIT DAUGHTERCARD SALES ASSEMBLY	
MOLEX INCORPORATED		SHEET NO.	DATE
LITTLEILL. 60532 U.S.A.		1 OF 1	99/12/16
PART NO.		DRAWG. NO.	
73670-0418		SDA-73670-0418	

DRWG. BY	CHK'D. BY
JPB	SMR
APP'D. BY	SCALE
CAB	1 : 1

FILE NAME	DIV.	SIZE
7367418.DGN	DA	B

DAUGHTERCARD HOLE PATTERN AS VIEWED FROM CONNECTOR SIDE