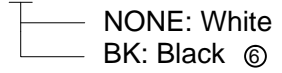


④ **USB 2.0 COMPLIANT**

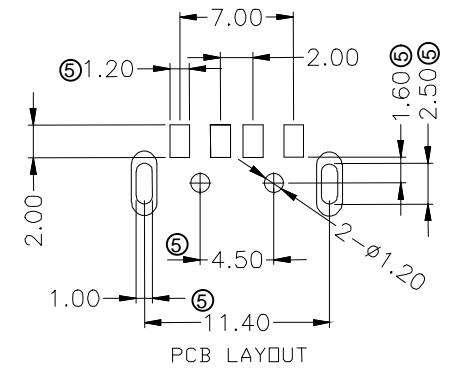
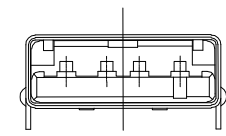
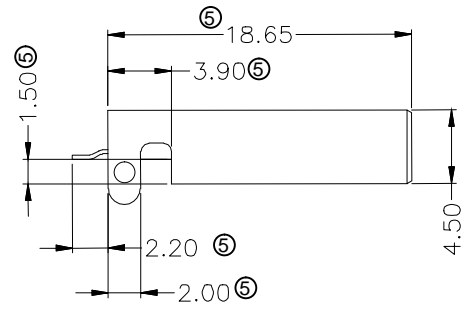
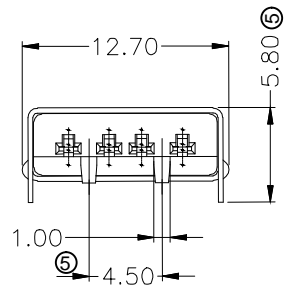
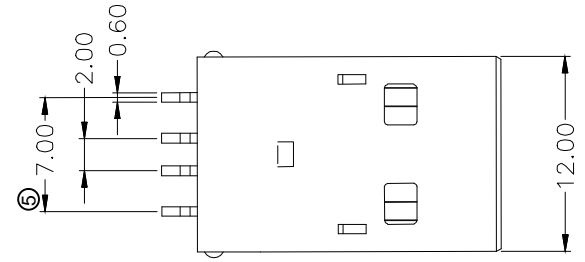
NOTES:

MATERIAL:

⑤ 1. Insulation: LCP UL94V-0, Color as below:
A-USB A-LP-SMT-C-xx



- 2. Contact : Brass
- 3. Plating : Selective Gold Flash over 50μ" Nickel
- ⑤ 4. Shell Plating: SPCC , 50μ" Nickel
- 5. Packing: 100pcs/Tray
- ⑤ **MECHANICAL:**
 - 1. MATING FORCE:3.57KG MAX
 - 2. UNMATING FORCE:1.02KG MIN
 - 3. DURABILITY:1500 CYCLES MIN
- ⑤ **ELECTRICAL:**
 - 1. CURRENT RATING:1.5A
 - 2. DIELECTRIC STRENGTH: 500V AC FOR 1MINUTE
 - 3. CONTACT RESISTANCE: 30MΩ MAX
 - 4. INSULATION RESISTANCE: 1000MΩ MIN
- ⑦ **OPERATING TEMPERATURE: -55°C TO +90°C**



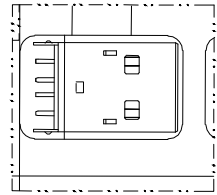
RoHS compliant
Unit: mm

Scale	Free	⑦	Modification	Date	Name
TOLERANCE		⑥	Add new PN for black insulator	17.07.2020	Luca
.X	±0.30	⑤	Update to new spec and page 2	06.03.2018	Tom
.XX	±0.20	④	Add USB 2.0 compliant	27.08.2013	Ray
.XXX	±0.10	③	Correct the packing	22.03.2011	Rale
DIM	TOL	②	Update	07.07.2009	Dean
X.°	±5°				
Angle	TOL				
UNIT	mm	Id.	Modification	Date	Name

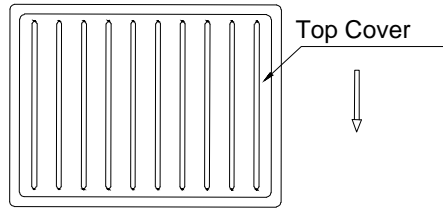


Description: USB 2.0	
A TYPE/MALE/SMT	
ASSMANN WSW-No. A-USB A-LP-SMT-C-xx	
Drawing-No. ASS 1452A CO	rev07
Customer-No.	SHEET 1 / 2

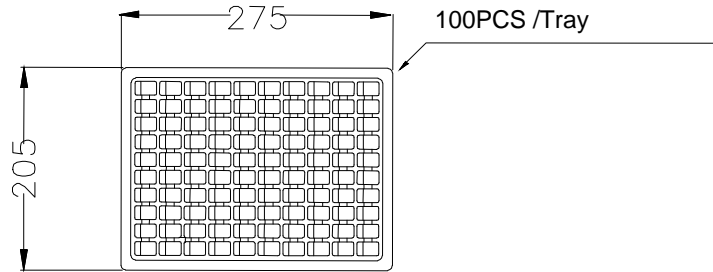
USB 2.0 COMPLIANT



5:1



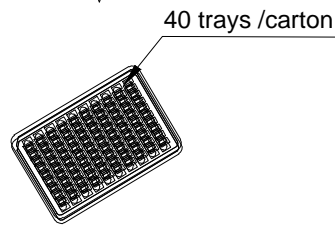
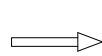
Top Cover



100PCS /Tray

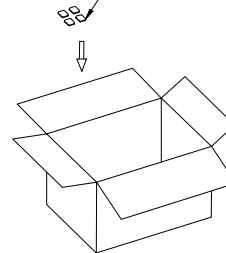
205

275

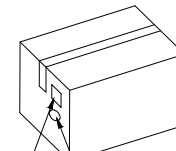


40 trays /carton

drying agent



Label



RoHS Label

NOTES:

Packing quantity :4KPCS / Carton .
Carton Size: 49*29*19cm

RoHS compliant

Unit: mm

Scale	Free	⑦	Update operating temperature	26.07.2021	Luca		Date	Name
TOLERANCE		⑥	Add new PN for black insulator	17.07.2020	Luca	Drawn	25.03.2006	Hellwig
.X	±0.30	⑤	Update to new spec and page 2	06.03.2018	Tom	Approved	26.07.2021	Luca
.XX	±0.20	④	Add USB 2.0 compliant	27.08.2013	Ray			
.XXX	±0.10	③	Correct the packing	22.03.2011	Rale			
DIM	TOL	②	Update	07.07.2009	Dean			
X.°	±5°	Id.	Modification	Date	Name			
Angle	TOL							
UNIT	mm							

Description: USB 2.0
A TYPE/MALE/SMT

ASSMANN WSW-No.
A-USB A-LP-SMT-C-xx

Drawing-No.
ASS 1452A CO rev07

Customer-No. SHEET 1 / 2