

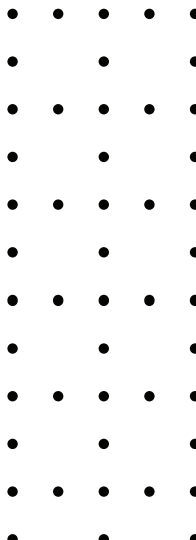


**BAYSHORE NETWORKS**  
INDUSTRIAL AND IT NETWORK SECURITY



**OTfuse™**  
INDUSTRIAL SECURITY APPLIANCE

**Datasheet**



OTfuse is an automatically configured industrial security appliance and intelligent Intrusion Prevention System (IPS) designed for easy deployment and use by automation engineers.

It is a physical device that sits in front of critical utility endpoints protecting PLCs, VFDs and other network connected devices. It learns and enforces normal operations for your plant environment and actively eliminates threats to OT assets in real-time. It protects the OT network from unauthorized config changes, device resets, device reads, logic updates, and message values. It is your last line of defense for protecting plant assets from unauthorized or unintended (mis)use.

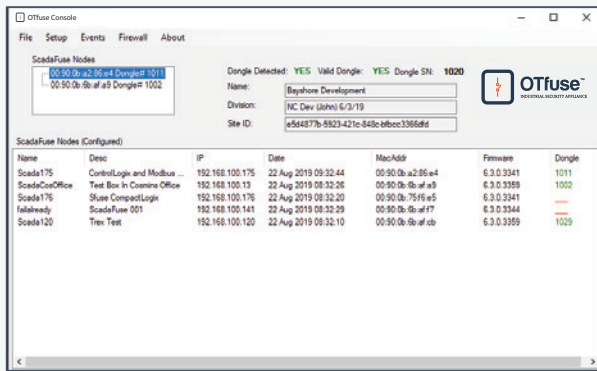
- *Automatically configured industrial security appliance and intelligent intrusion prevention system*
- *Actively eliminates threats to OT assets in real-time*
- *Protect from unauthorized config changes, device resets, device reads, logic updates, message values*
- *Learns and enforces normal operations for your plant environment*
- *Customized policies to ensure integrity of access and content of your unique environment*
- *A physical device that sits in front of critical utility endpoints protecting PLCs, VFDs and other network connected devices*
- *Designed for easy deployment and use by automation engineers*
- *Your last line of defense for protecting plant assets from unauthorized or unintended (mis)use*

Reject unauthorized...	Protect PLCs and SCADA/DCS devices from...	Modbus	Ethernet/IP	Siemens S7	SLMP	FINS	DNP3	Bacnet
Config Changes	Attempted config changes from unknown sources	✓	✓	✓	✓	✓	✓	✓
Device Resets	Attempted writes/resets from unknown sources	✓	✓	✓	✓	✓	✓	✓
Device Reads	Attempted interrogations from unknown sources	✓	✓	✓	✓	✓	✓	✓
Logic Updates	Programming changes overall or by schedule		✓	✓	✓	✓	✓	✓
Message Values	Unknown parameter values within known and approved value ranges	✓	✓	✓	✓	✓	✓	✓

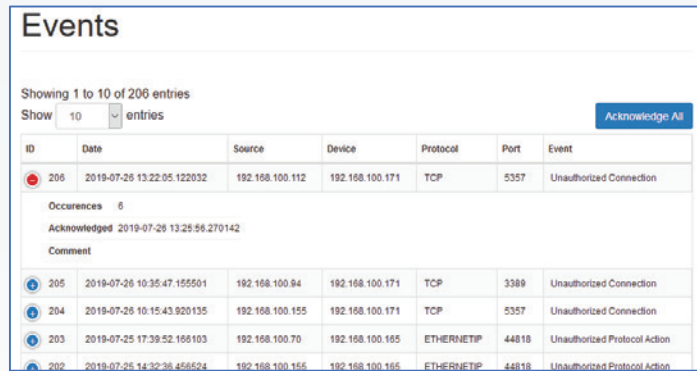
Feature	OTfuse™	Tofino/Checkpoint/Radiflow	IT Firewalls
<b>NATIVE OT PROTOCOL SUPPORT</b>	✓	✓	ⓘ
<b>DEEP PACKET INSPECTION</b>	✓	✓	ⓘ
<b>NETWORK BYPASS FOR MAX RELIABILITY</b>	✓	✗	✗
<b>DIN RAIL INDUSTRIAL HARDWARE</b>	✓	ⓘ	ⓘ
<b>LAYER 2 TRANSPARENT BRIDGE</b>	✓	✗	✗
<b>HARDWARE USB KEY SECURITY</b>	✓	✗	✗

ⓘ Feature may be partially implemented, or only on certain models

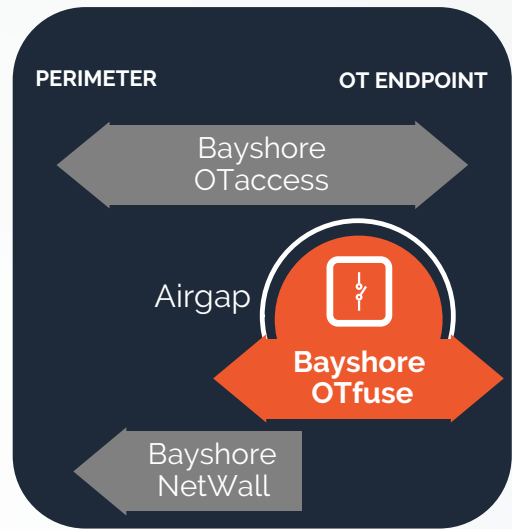
## OTfuse Windows Management Console



## OTfuse Protection Events



Specs	OTfuse
Hardware Manufacturer	Lanner
CPU	ATOM (E3845)
RAM	8Gb
Storage	128Gb
USB Interfaces	2 (1x2.0; 1x3.0)
Power Inputs	2 voltage inputs (redundant power)
Input Power Range	12 - 36Vdc power input
Serial (Console)	Yes (1)
Ethernet Ports	2/4 Gigabit
Bypass Pair (Qty)	Yes (1)
Operating Temp Range	Standard: -40°C ... +75°C
Digital Input	No
Dimension Drawings	146H/127D/78W (mm)
Hardware Key Authentication	USB by Keyloc, used for setup/admin/config
Weight	1 kg
Standard Certificates and Declarations	CE/FCC Class A/RoHS
Vibration 60068-2-6, test Fc	Yes
EMC Interference Certification	EN55032:2015+AC:2016 Class A; EN55024:2010



**BAYSHORE  
NETWORKS**