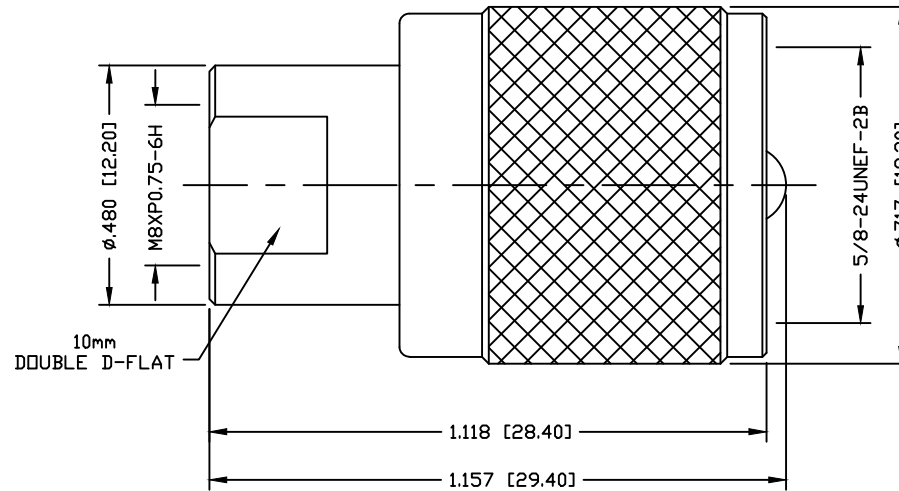


PART NO.

RFE-6112

REV	DESCRIPTION	DWN	DATE	APPROVED
-	ENGINEERING RELEASE	CZS	01/15/20	JDMc



SPECIFICATIONS:

IMPEDANCE: NON-CONTANT
 FREQUENCY RANGE: 0-300 MHz
 WORKING VOLTAGE: 335 Vrms
 INSULATION RESISTANCE: 5k M ohms min.
 TEMPERATURE RANGE: -65°C TO +165°C

#	DESCRIPTION	QTY	MATERIAL	FINISH
4	SHELL	1	BRASS	NICKEL
3	PIN	1	BRASS	GOLD
2	INSULATOR	1	PTFE	---
1	BODY	1	BRASS	NICKEL

CUSTOMER
OUTLINE DRAWINGALL DIMENSIONS
ARE REFERENCE ONLYUNLESS OTHERWISE SPECIFIED:
DIMENSIONS ARE IN INCHES
AND [MILLIMETERS]

DRAWN	C. ZUNIGA	01/15/20
CHECKED		
ORJ DRAWN	C. ZUNIGA	01/15/20

RoHS
COMPLIANT

PROPRIETARY AND CONFIDENTIAL
 THIS DRAWING CONTAINS
 INFORMATION PROPRIETARY TO
 RF INDUSTRIES, ANY
 UNAUTHORIZED USE OF THIS
 DRAWING IS EXPRESSLY
 PROHIBITED WITHOUT WRITTEN
 PERMISSION FROM RF
 INDUSTRIES. ANY VIOLATION IS
 PUNISHABLE UNDER U.S.
 COPYRIGHT LAWS.

RFconnectors
 DIVISION OF RF INDUSTRIES, LTD.

7610 MIRAMAR RD.
 SAN DIEGO, CA 92126
 (858) 549-6340
 (858) 549-6345 FAX

FME PLUG TO
UHF PLUG ADAPTER

SIZE	CABLE GROUP	DWG NO.	REVISION
A	N/A	RFE-6112	---
SCALE:	NTS	ENGINEERING ID:	1560
			SHEET 1 OF 1