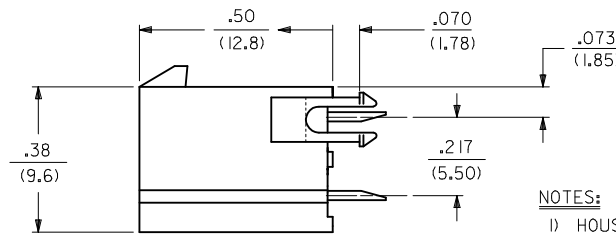
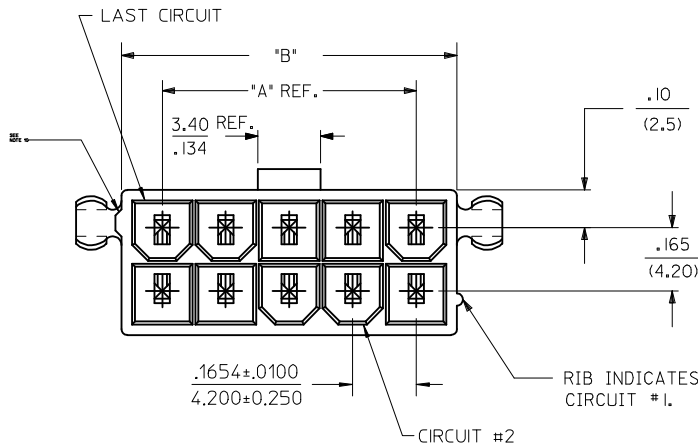
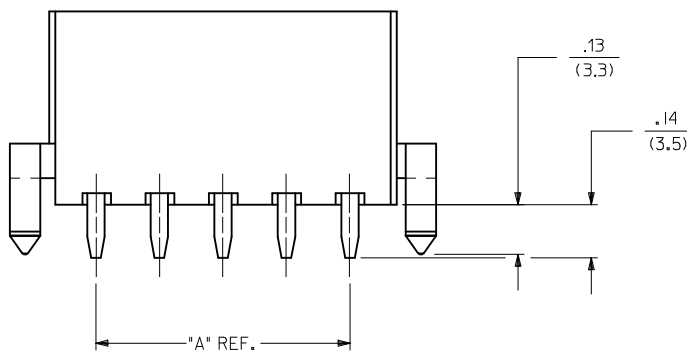


CIRCUIT SIZE	DIM. "A"	DIM. "B"	DIM. "C"
2	—	.21 (5.4)	.370 (9.40)
4	.17 (4.2)	.38 (9.6)	.535 (13.60)
6	.33 (8.4)	.54 (13.8)	.701 (17.80)
8	.50 (12.6)	.71 (18.0)	.866 (22.00)
10	.66 (16.8)	.87 (22.2)	1.031 (26.20)
12	.83 (21.0)	1.04 (26.4)	1.197 (30.40)
14	.99 (25.2)	1.20 (30.6)	1.362 (34.60)
16	1.16 (29.4)	1.37 (34.8)	1.528 (38.80)
18	1.32 (33.6)	1.54 (39.0)	1.693 (43.00)
20	1.49 (37.8)	1.70 (43.2)	1.858 (47.20)
22	1.65 (42.0)	1.87 (47.4)	2.024 (51.40)
24	1.82 (46.2)	2.03 (51.6)	2.189 (55.60)



NOTES:

- HOUSING MATERIAL:  
V-2 = NYLON 6/6, UNFILLED U.L. 94V-2, COLOR: NATURAL.  
V-0 = NYLON 6/6, UNFILLED U.L. 94V-0, COLOR: NATURAL.  
GW V-0 = NYLON UL94V-0, COLOR: BLACK  
IEC 60335-1 4TH EDITION GLOW WIRE CAPABLE  
TERMINAL MATERIAL: COPPER ALLOY.
  - TERMINAL PLATING:  
TIN = .000100/(.00254) MIN. MATTE TIN OVER .000050/(.00127) MIN. NICKEL OVERALL  
GOLD = .000030/(.00080) MIN. SELECT GOLD, .000100/(.00254) MIN. MATTE TIN OVER .000050/(.00127) MIN. NICKEL OVERALL
  - PRODUCT SPECIFICATION: PS-45750-001
  - PACKAGING SPECIFICATION: PK-5566-001.
  - PART MATES WITH MINI-FIT JR. RECEPTACLE NO. 5557.
  - PART ARE NOT TO BE MATED OR UN-MATED WHILE CIRCUITS ARE LIVE.
  - PARTS TO HAVE "HCS+" MARKING
  - PART CONFORMS TO CLASS B OF COSMETIC SPECIFICATION PS-45499-002 WITH THE EXCEPTION OF DISCOLORATION, FLASH, AND SINK MEET CLASS "C" REQUIREMENTS.
  - PART IS NOT DESIGNED FOR CURRENT SHARING.
  - ANTI-SHINGLING RIB MAY OR MAY NOT APPEAR ON HOUSINGS.
- LOCATION OF .118/3.00 DIAMETER HOLES ON P.C. BOARD IS FOR OPTIONAL PEGS.



<b>ADD NOTE 11</b> IEC NO: UCP2014-4789 DRWN: DFOX 2014/06/02 CHKD: JBELL 2014/06/02 APPR: FSMITH 2014/06/23	QUALITY SYMBOLS	GENERAL TOLERANCES (UNLESS SPECIFIED)	DIMENSION STYLE	SCALE	DESIGN UNITS	THIRD ANGLE PROJECTION
	▽=0	mm INCH	IN/MM	4:1	METRIC	
	▽=0	4 PLACES ± --- ± ---	DRAWN BY DATE	TITLE	<b>VERTICAL HEADER ASSEMBLY DUAL ROW MINI-FIT PLUS HCS SERIES</b> <b>molex</b>	
	▽=0	3 PLACES ± --- ± .010	CHECKED BY DATE			
▽=0	2 PLACES ± 0.25 ± .020	APPROVED BY DATE				
	1 PLACE ± 0.50 ± ---					
	0 PLACE ± --- ± ---					
		ANGULAR ±1/2°	MATERIAL NO.		DOCUMENT NO.	SHEET NO.
		DRAFT WHERE APPLICABLE MUST REMAIN WITHIN DIMENSIONS	SEE TABLE		SD-46015-001	1 OF 2
			SIZE C	THIS DRAWING CONTAINS INFORMATION THAT IS PROPRIETARY TO MOLEX INCORPORATED AND SHOULD NOT BE USED WITHOUT WRITTEN PERMISSION		

13		12		11		10		9		8		7		6		5		4		3		2		1													
ITEM NO.	CKT SIZE	HOUSING MATERIAL	PEGS	PLATING														ITEM NO.	CKT SIZE	HOUSING MATERIAL	PEGS	PLATING															
46015-0202	2	V-0	NO	TIN	I	I	I	I	I	I	I	I	I	I	I	I	I	46015-1402	14	V-0	NO	TIN	I	I	I												
46015-0203			YES															46015-1403			YES																
46015-0206			NO															46015-1406			NO																
46015-0207		YES	46015-1407															YES																			
46015-0211		GW V-0	YES															46015-1409		YES																	
46015-0209			V-0															YES		GOLD																	
46015-0210	GW V-0		YES																																		
46015-0212	4	V-0	NO	H														H	H		H	H				H	H	H	H	H	H	H	H	46015-1602	16	V-0	NO
46015-0402			YES																	46015-1603														YES			
46015-0403			NO																	46015-1606														NO			
46015-0406		V-2	NO																	46015-1607														YES			
46015-0407			YES																	46015-1609														YES			
46015-0411			GW V-0		YES	46015-1612	NO																														
46015-0409	6	V-0	YES		G	G	G	G	G	G	G	G	G	G	G	G	G			46015-1802			18	V-0	NO									TIN			
46015-0412			V-0																	YES					46015-1803										YES		
46015-0602			NO																	46015-1806					NO												
46015-0603		YES	46015-1807																	YES																	
46015-0606		V-2	NO																	46015-1809				YES													
46015-0607			YES																	46015-1812				NO													
46015-0611	GW V-0		YES	46015-2002														V-0																			
46015-0609	8	V-0	YES	F														F	F	F	F	F	F	F	F	F	F	F	F	46015-2003	20	V-2	NO	TIN			
46015-0610			GW V-0																											YES			46015-2006		NO		
46015-0612			V-0																											NO			46015-2007		YES		
46015-0802		10	V-0																											NO		46015-2009	YES				
46015-0803																														YES		46015-2012	NO				
46015-0806					NO	46015-2202	V-0																														
46015-0807	YES		46015-2203		YES																																
46015-0811	GW V-0		YES		46015-2206	NO																															
46015-0809			V-0		YES	46015-2207	YES																														
46015-0810		GW V-0	YES		46015-2209	YES																															
46015-0812	12	V-0	NO		46015-2212	NO																															
46015-1002			NO		46015-2402	V-0																															
46015-1003			YES	46015-2403	YES																																
46015-1006		V-2	NO	46015-2406	NO																																
46015-1007			YES	46015-2407	YES																																
46015-1011			GW V-0	YES	46015-2409	YES																															
46015-1009	12	V-0	YES	46015-2412	NO																																
46015-1010			GW V-0	YES																																	
46015-1012			V-0	NO																																	
46015-1202		12	V-0	NO																																	
46015-1203				YES																																	
46015-1206				NO																																	
46015-1207	V-2		YES																																		
46015-1211			GW V-0	YES																																	
46015-1209			V-0	YES																																	
46015-1210	12	GW V-0	YES																																		
46015-1212			V-0	NO																																	

<b>SEE SHEET 1</b> EC NO: UCP2014-4789 DRWN: DFOX 2014/06/02 CHKD: JBELL 2014/06/02 APPR: FSMITH 2014/06/23	QUALITY SYMBOLS 	GENERAL TOLERANCES (UNLESS SPECIFIED)		DIMENSION STYLE IN/MM		SCALE 1:1	DESIGN UNITS METRIC	THIRD ANGLE PROJECTION			
		4 PLACES ± --- ± ---	3 PLACES ± --- ± .010	2 PLACES ± 0.25 ± .020	1 PLACE ± 0.50 ± ---	0 PLACE ± --- ± ---	DRAWN BY TGREGORI	DATE 2006/04/27	TITLE <b>VERTICAL HEADER ASSEMBLY          DUAL ROW          MINI-FIT PLUS HCS SERIES</b>		
		ANGULAR ±1/2°					CHECKED BY JCOMERC I	DATE			
		DRAFT WHERE APPLICABLE MUST REMAIN WITHIN DIMENSIONS					APPROVED BY FSMITH	DATE 2010/04/09	MATERIAL NO. <b>SEE CHART</b>		
						DOCUMENT NO. SD-46015-001		SHEET NO. 2 OF 2			