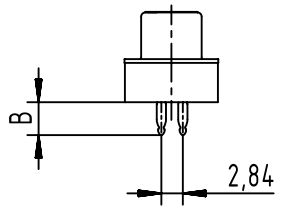
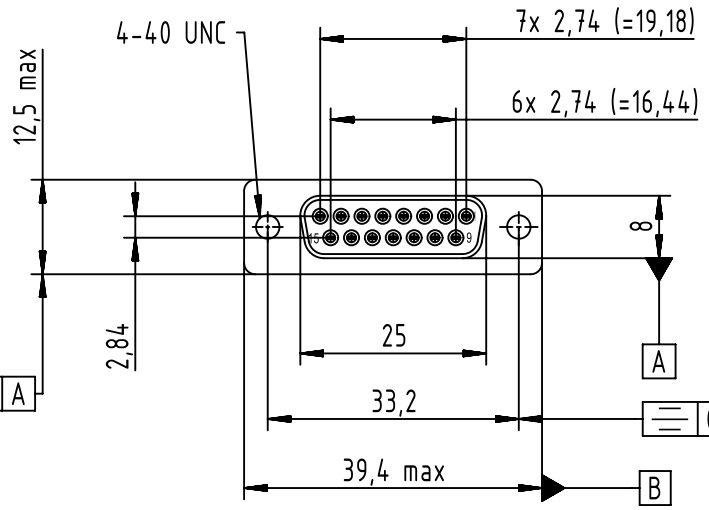
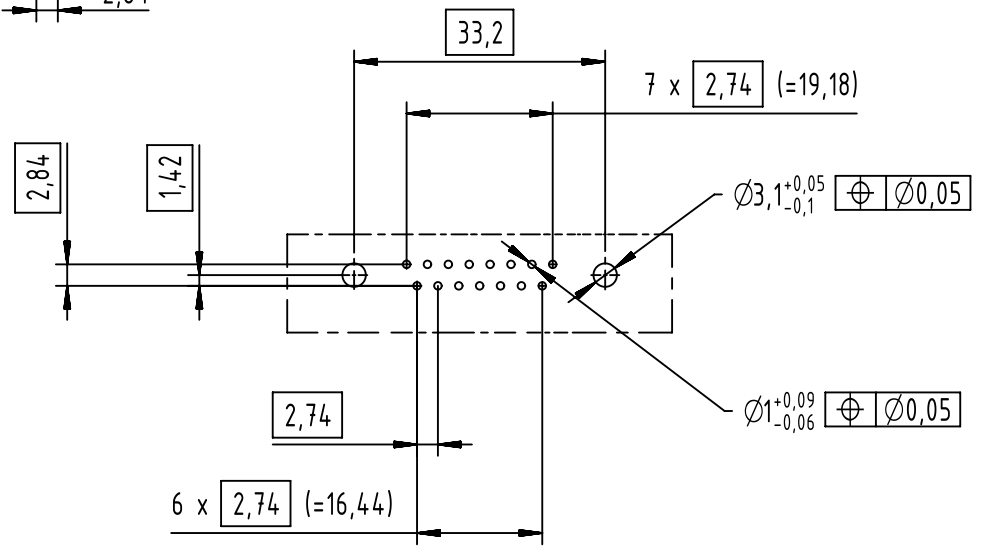


Mark for A=5,7 mm version



PC-Board layout
view component side
thickness up to 3,2 mm



0,25 A

A

0,25 B

B

| | | | | | | |
|--------------------------|--|---|-------------------------|---------------------------|-----------------------------|--|
| | All Dimensions in mm Original Size DIN A4 | | Scale 1:1 | Free size tol. | | Ref. |
| | All rights reserved | | Created by LAVERGNEC | Inspected by BAGDIKIAN | Standardisation HOFFMANN | Sub. |
| Department EC PD - FR | | Date 2014-04-02 | | State Final Release | | |
| HARTING Electronics GmbH | | Title D-Sub 15-pole straight female press-in | | | | Doc-Key / ECM-Nr. 100571938/UGD/001/A 500000072779 |
| D-32339 Espelkamp | | Type TB | | Number 0966254X512 | | Rev. A Page 1/1 |

| | | | | |
|---|-------------|-------------------|-----------|-----------|
| D | 09662547512 | 3 | 6 | 4,20 |
| | 09662546512 | 2 | 6 | 4,20 |
| | 09662545512 | S4 PdNi | 6 | 4,20 |
| | Part number | Performance level | A +/- 0,2 | B +/- 0,2 |