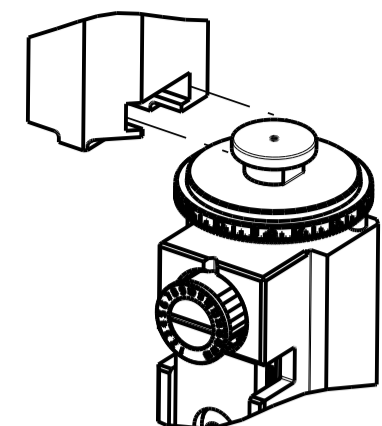


PART NUMBER	REVISION	DESCRIPTION	FEED TYPE
2151245-2	C	FINE CRIMP HEIGHT ADJUST	PNEUMATIC
7-2151245-2	C	PNEUMATIC AND CRIMP TOOLING KIT	PNEUMATIC
7-2151245-7	A	CRIMP TOOLING KIT	-

ATLANTIC VERSION TERMINATOR INTERFACE ADAPTER



APPLICATOR DATA		
CRIMP	SIZE	TYPE
WIRE	2.79 mm [.110]	F
INSUL	3.94 mm [.155]	F

APPLICATOR INSTRUCTIONS 408-35042

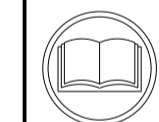
TERMINAL DATA: TE TERMINAL TE CRIMP SPECIFICATION

TERMINAL NAME: STANDARD TIMER CONTACT	
WIRE STRIP LENGTH 4.20-4.80 mm [.165-.189 IN]	INSULATION DIAMETER RANGE Ø2.40-3.70 mm [.094-.146 IN]
TERMINAL APPLICATION SPECIFICATION (A)1114-18079	(B)1114-18080

TERMINALS APPLIED

TE TERMINAL	TE TERMINAL	TE TERMINAL	TE TERMINAL
(A) 925595-1	(A) 925595-7	(B) 926006-1	(B) 964202-1
(A) 925595-2	(B) 925612-1	(B) 926006-2	(B) 964202-2
(A) 925595-3	(B) 925612-2	(B) 926006-3	(B) 964202-3
(A) 925595-4	(B) 925612-3	(B) 926973-1	(B) 964202-4
(A) 925595-5	(A) 925621-1	(B) 928805-3	
(A) 925595-6	(A) 925621-2	(B) 928805-5	

WIRE SIZE	CRIMP HEIGHT mm [INCH]	CRIMP HEIGHT REFERENCE SETTING
2.50mm2	1.70 +/- 0.05 [.067 +/- .002]	5.4
2.00mm2	1.58 +/- 0.05 [.062 +/- .002]	6.9
1.75mm2	1.52 +/- 0.05 [.060 +/- .002]	7.2
1.50mm2	1.45 +/- 0.05 [.057 +/- .002]	8.2
1.25mm2	1.39 +/- 0.05 [.055 +/- .002]	8.7
1.00mm2	1.32 +/- 0.05 [.052 +/- .002]	9.4



- 1. RECOMMENDED SPARE PARTS
- 2. REFER TO SUPPLIED INSTRUCTION SHEET FOR CLEANING, LUBRICATION AND STORAGE OF APPLICATOR.
- 3. APPLY PART NUMBER 2-23419-6 LOCTITE TO THREADS OF ITEM 242.
- 4. CRIMP HEIGHT REFERENCE SETTING WAS THE SETTING USED WHEN THE APPLICATOR WAS QUALIFIED AT THE FACTORY. ADJUSTMENT MAY BE NECESSARY WHEN RUNNING APPLICATOR IN THE FIELD.
- 5. WIRE SIZES 1.25mm2 AND 1.00mm2 NOT COMPATIBLE WITH TERMINAL P/N 964202.
- 6. TERMINAL FEED NOT COMPATIBLE WITH MECHANICAL FEED.
- 7. UNLESS SPECIFIED OTHERWISE TORQUE VALUES SHALL BE USED PER DOCUMENT, 101-35000.

*WARNING

ON INSTALLATION, SET WIRE DISC TO CRIMP HEIGHT REFERENCE SETTING FOR LARGEST WIRE SIZE. CRIMP HEIGHT REFERENCE SETTINGS GREATER THAN THE VALUE SHOWN MAY CAUSE DAMAGE TO THE CRIMP TOOLING, REFER TO THE INSTRUCTION SHEET FOR PROPER SETUP AND ADJUSTMENTS.

LOC	DIST	REV	DATE	BY	APPV
A	66	A	03JAN2014	BH	GB
		A1	20OCT2015	YY	GB
		B	23MAY2018	VLA	JDG
		C	25MAY2021	FJ	TE

QTY	UNIT	ITEM NO	DESCRIPTION	ITEM NO
-	1	1	2119641-1 FEED CAM, AIR FEED	248
-	1	1	2119082-9 CAM, SNAIL, INSULATION ADJUSTMENT	244
-	1	1	2079764-1 WASHER, WAVE SPRING, CREST-TO-CREST	243
-	1	1	2119083-1 RETAINER, INSULATION DIAL	242
-	1	1	7-18023-7 SCR, SKT HD CAP M3 X 4.0	241
-	1	1	2844940-1 AIR FEED MODULE	238
-	REF	REF	994970-2 COUNTER, MAGNETIC	164
-	1	1	1-18028-2 WASHER, FLAT, REG M4	119
-	1	1	2844908-1 SCREW, LOCKING	99
-	1	1	2844907-1 POST, LOCKING	98
-	1	1	455888-4 SPACER, CRIMPER	82
-	1	1	5-547505-2 SPRING, COMPRESSION	77
-	1	1	854769-4 HOLDER, INS	74
-	1	1	1803607-3 DOCUMENTATION PACKAGE	71
-	1	1	2119740-1 TAG, IDENTIFICATION	67
-	2	2	2168078-1 SCREW, DRIVE, RH, RoHS, 2 x .188	66
-	1	1	2168083-2 SCR, SKT HD CAP, RoHS, M4 X 8.0	60
-	1	1	5-18022-5 SCR, HEX HD CAP, M4 X 6.0	59
-	1	1	21028-2 PIN, SLOTTED SPRING .062 X .250	58
-	1	1	1338685-1 PAWL, FEED	56
-	4	4	2168083-3 SCR, SKT HD CAP, RoHS, M4 X 12.0	54
-	2	2	1-2168083-0 SCR, SKT HD CAP, RoHS, M4 X 10	53
-	1	1	5018030-1 NUT, HEX, REG, RoHS, M3	52
-	1	1	811242-5 BUMPER, HOLD DOWN	51
-	1	1	690753-2 SPACER, TONKER	50
-	1	1	18023-9 SCR, SKT HD CAP M4 X 6.0	49
-	1	1	1803583-9 APPLICATOR BASIC ASSEMBLY, SF	46
-	1	1	1803515-1 RAM ASSEMBLY, SF ATLANTIC	44
-	1	1	1803602-1 SCR, BHSC, RoHS (M8 X 25)	41
-	1	1	1752356-3 SUPPORT, TERMINAL	34
-	2	2	2079383-5 SCR, BHSC, RoHS (M4 X 20)	33
-	2	2	2-2844962-6 SPACER, CYLINDRICAL, STRIP GUIDE	30
-	1	1	2844992-1 ASSEMBLY, STRIP GUIDE	29
-	1	1	455888-3 SPACER, CRIMPER	28
-	1	1	1320928-2 STRIP GUIDE	24
-	1	1	2168083-2 SCR, SKT HD CAP, RoHS, M4 X 8.0	21
-	1	1	1-18028-2 WASHER, FLAT, REG M4	20
-	1	1	2119533-1 STRIPPER, SIDE FEED	19
-	1	1	2119806-1 INSERT, SHEAR	13
-	1	1	3-22280-3 SPRING, COMPRESSION	12
-	1	1	1-356885-4 STOP, SHEAR	11
-	1	1	2119805-1 SHEAR HOLDER, FRONT	10
-	1	1	1803095-6 FLOATING SHEAR, FRONT	9
1	2	1	1333207-8 ANVIL, COMBINATION .110	8
-	-	-	-	7
-	-	-	-	6
-	1	1	1-2119780-1 DEPRESSOR, SHEAR	5
-	1	1	1-238011-7 BLOCK, CRIMPER SPACER	4
1	2	1	2-2119582-6 CRIMPER, INSULATION F PREMIUM	3
-	1	1	455888-4 SPACER, CRIMPER	2
1	2	1	456408-2 CRIMPER, WIRE PREMIUM	1

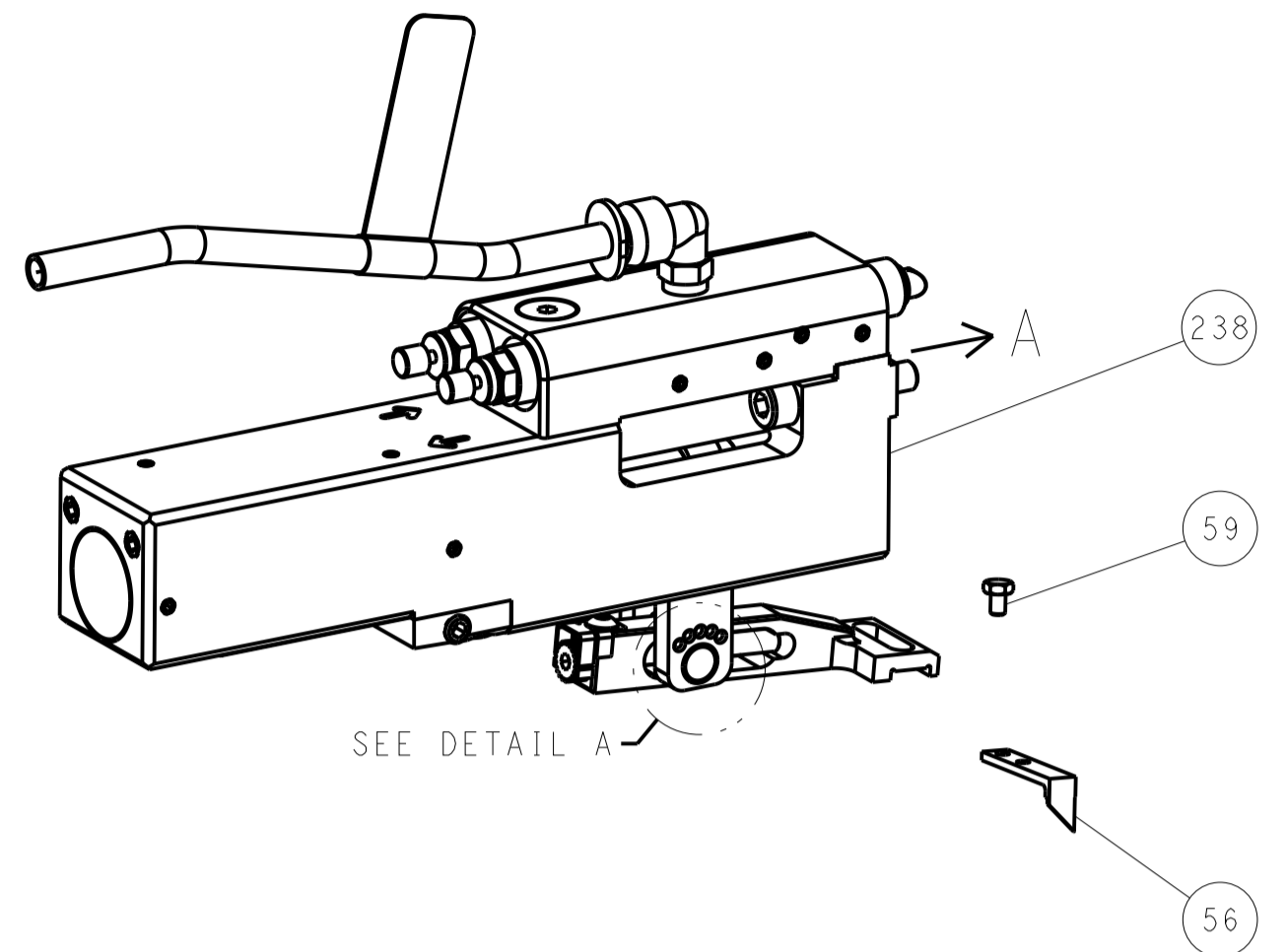
ATLANTIC VERSION
Shown on sheets 1 of 4 & 2 of 4
(Pacific version shown on sheets 3 of 4 & 4 of 4)

DIMENSIONS: mm		TOLERANCES UNLESS OTHERWISE SPECIFIED:		DWG: L. ZHANG OSSEP2012		CHK: L. ZHANG OSSEP2012		APVD: S. XI OSSEP2012		NAME: Ocean Side Feed Applicator	
0 PLC	±	1 PLC	±	2 PLC	±	3 PLC	±	4 PLC	±	ANGLES	±
MATERIAL:		FINISH:		WEIGHT:		SCALE: 1:2		SHEET 1 OF 4		REV C	

LOC	DIST	REV	DATE	BY	APPV
A	66				

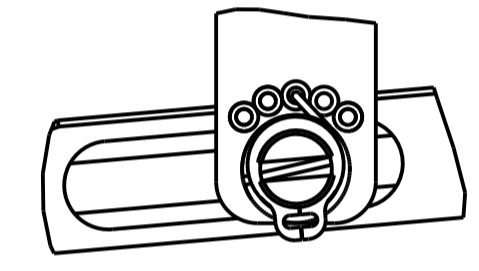
FEED TYPE

PNEUMATIC

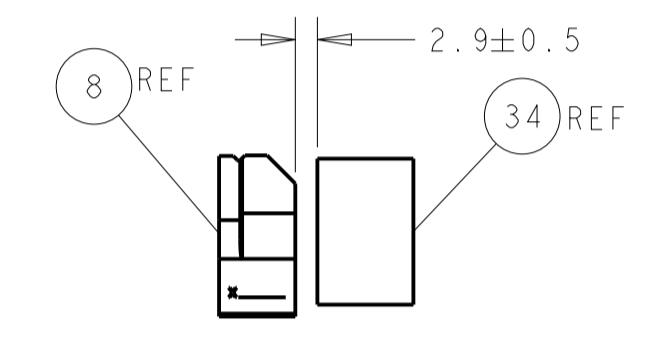
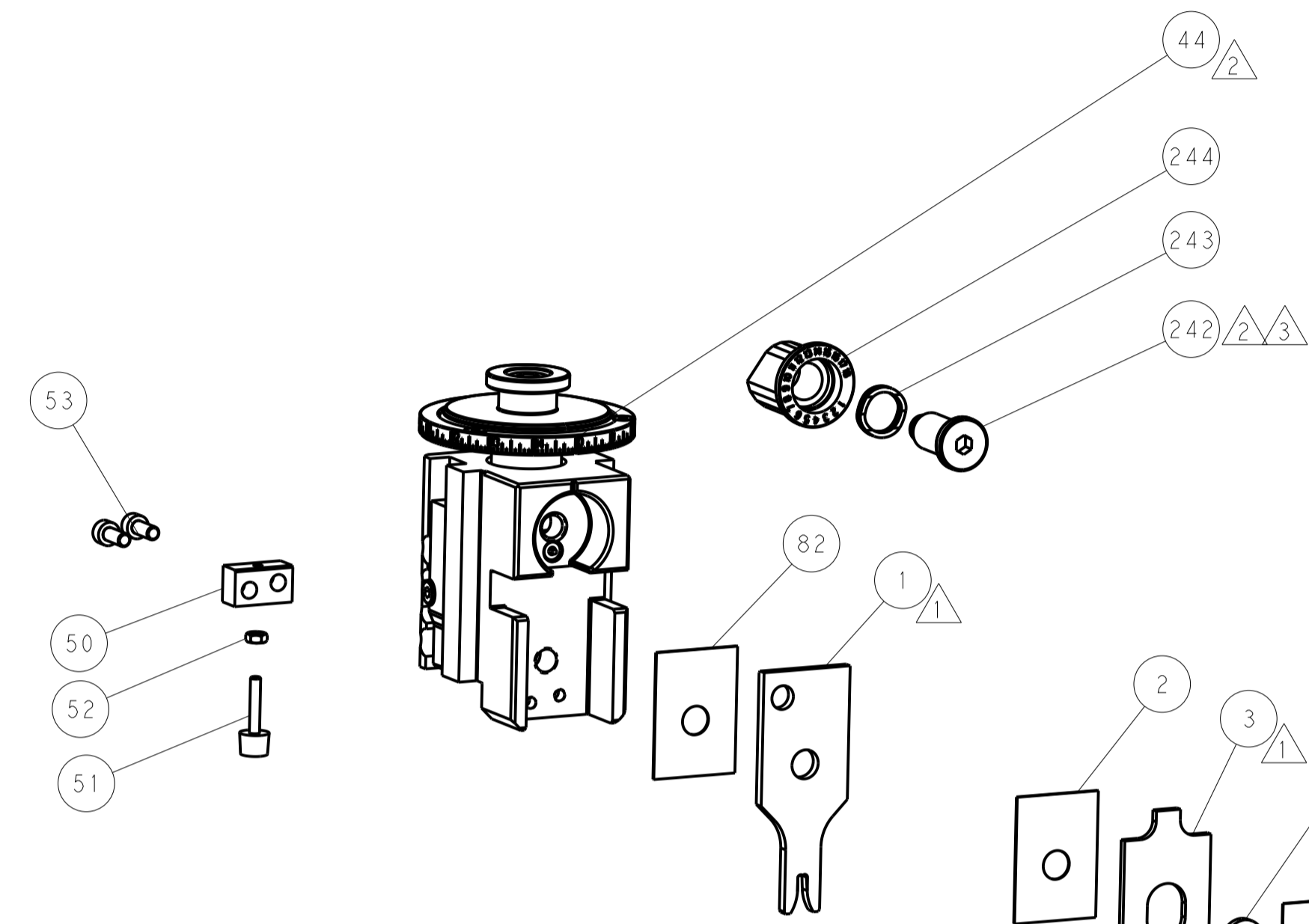


SEE DETAIL A

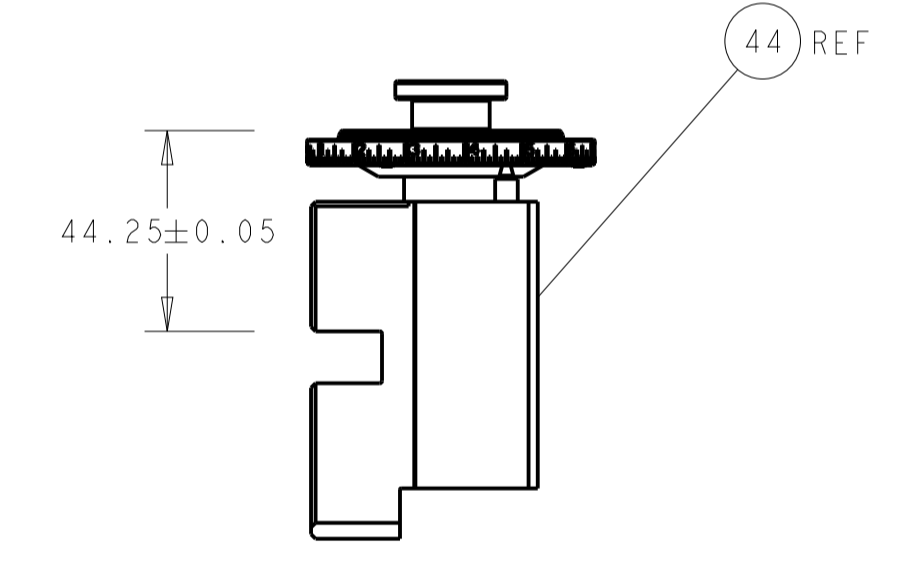
FEED SPRING SETTING POSITION (SHOWN FROM REAR SIDE)



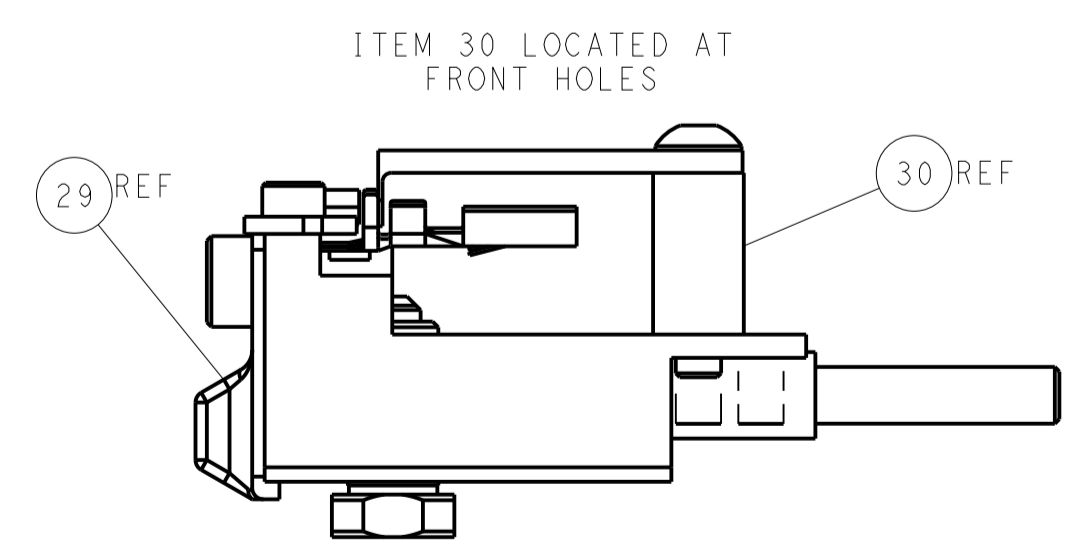
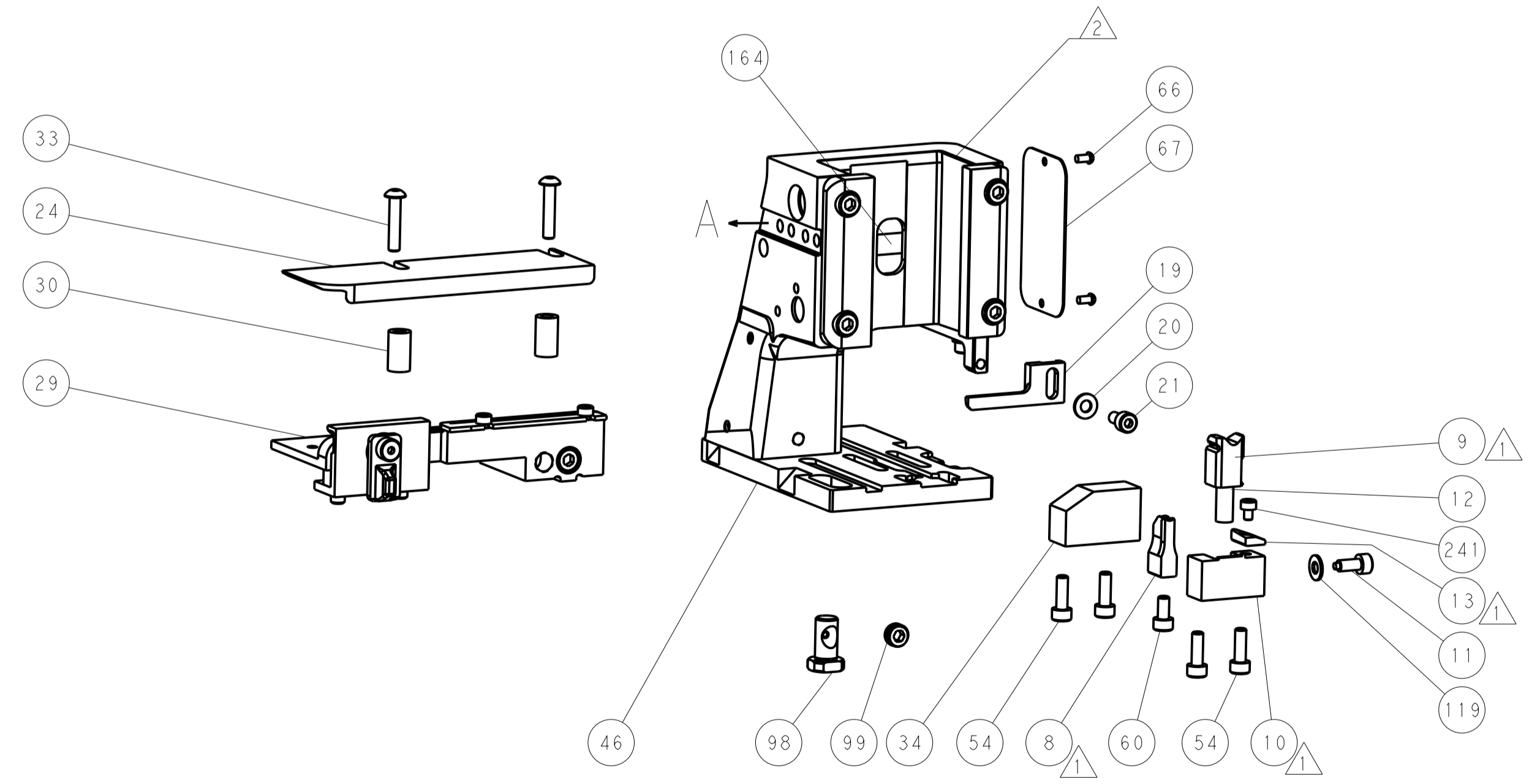
DETAIL A



TERMINAL SUPPORT LOCATION

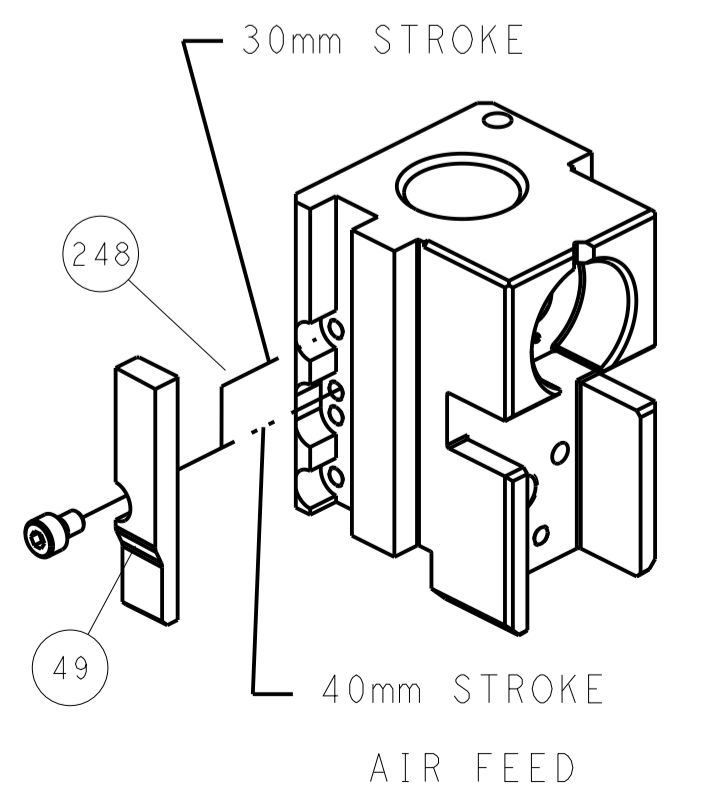


RAM SET-UP



FEED TRACK POSITION
GUIDE BY INSULATION BARREL

CAM POSITION

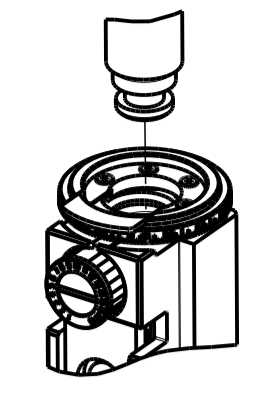


ATLANTIC VERSION
 Shown on sheets 1 of 4 & 2 of 4
 (Pacific version shown on sheets 3 of 4 & 4 of 4)

DIMENSIONS:		TOLERANCES UNLESS OTHERWISE SPECIFIED:		DWN L. ZHANG 05SEP2012		TE Connectivity	
mm	0 PLC ±	1 PLC ±	2 PLC ±	3 PLC ±	4 PLC ±	Harrisburg, PA 17105-3608	
	ANGLES ±			CHK L. ZHANG 05SEP2012		NAME Ocean Side Feed	
MATERIAL		FINISH		APVD S. XI 05SEP2012		PRODUCT SPEC	
				NAME		APPLICATION SPEC	
				SIZE CAGE CODE DRAWING NO		RESTRICTED TO	
				WEIGHT		A1 00779 ©=2151245	
				CUSTOMER DRAWING		SCALE 1:2 SHEET 2 OF 4 REV C	

PART NUMBER	REVISION	DESCRIPTION	FEED TYPE
2-2151245-2	C	FINE CRIMP HEIGHT ADJUST	PNEUMATIC
7-2151245-7	A	CRIMP TOOLING KIT	-

PACIFIC VERSION TERMINATOR
 INTERFACE ADAPTER



APPLICATOR DATA		
CRIMP	SIZE	TYPE
WIRE	2.79 mm [.110]	F
INSUL	3.94 mm [.155]	F

APPLICATOR INSTRUCTIONS
 408-35042

TERMINAL DATA: TE TERMINAL		TE CRIMP SPECIFICATION	
TERMINAL NAME: STANDARD TIMER CONTACT			
WIRE STRIP LENGTH		INSULATION DIAMETER RANGE	
4.20-4.80 mm [1.65-.189 IN]		∅2.40-3.70 mm [1.094-.146 IN]	
TERMINAL APPLICATION SPECIFICATION	(A)114-18079		
	(B)114-18080		

TERMINALS APPLIED			
TE TERMINAL	TE TERMINAL	TE TERMINAL	TE TERMINAL
(A) 925595-1	(A) 925595-7	(B) 926006-1	(B) 964202-1
(A) 925595-2	(B) 925612-1	(B) 926006-2	(B) 964202-2
(A) 925595-3	(B) 925612-2	(B) 926006-3	(B) 964202-3
(A) 925595-4	(B) 925612-3	(B) 926973-1	(B) 964202-4
(A) 925595-5	(A) 925621-1	(B) 928805-3	
(A) 925595-6	(A) 925621-2	(B) 928805-5	

WIRE SIZE	CRIMP HEIGHT mm [INCH]	CRIMP HEIGHT REFERENCE SETTING
2.50mm2	1.70 +/- 0.05 [1.067 +/- .002]	5.4
2.00mm2	1.58 +/- 0.05 [1.062 +/- .002]	6.9
1.75mm2	1.52 +/- 0.05 [1.060 +/- .002]	7.2
1.50mm2	1.45 +/- 0.05 [1.057 +/- .002]	8.2
1.25mm2	1.39 +/- 0.05 [1.055 +/- .002]	8.7
1.00mm2	1.32 +/- 0.05 [1.052 +/- .002]	9.4

- RECOMMENDED SPARE PARTS
- REFER TO SUPPLIED INSTRUCTION SHEET FOR CLEANING, LUBRICATION AND STORAGE OF APPLICATOR.
- APPLY PART NUMBER 2-23419-6 LOCTITE TO THREADS OF ITEM 242.
- CRIMP HEIGHT REFERENCE SETTING WAS THE SETTING USED WHEN THE APPLICATOR WAS QUALIFIED AT THE FACTORY. ADJUSTMENT MAY BE NECESSARY WHEN RUNNING APPLICATOR IN THE FIELD.
- WIRE SIZES 1.25mm2 AND 1.00mm2 NOT COMPATIBLE WITH TERMINAL P/N 964202.
- TERMINAL FEED NOT COMPATIBLE WITH MECHANICAL FEED.
- UNLESS SPECIFIED OTHERWISE TORQUE VALUES SHALL BE USED PER DOCUMENT, 101-35000.

***WARNING**
 ON INSTALLATION, SET WIRE DISC TO CRIMP HEIGHT REFERENCE SETTING FOR LARGEST WIRE SIZE. CRIMP HEIGHT REFERENCE SETTINGS GREATER THAN THE VALUE SHOWN MAY CAUSE DAMAGE TO THE CRIMP TOOLING, REFER TO THE INSTRUCTION SHEET FOR PROPER SETUP AND ADJUSTMENTS.

LOC	DIST	REV	DATE	BY	APPV
A	66				

REV	DATE	DESCRIPTION	DATE	BY	APPV
-	1	2119082-9			244
-	1	2079764-1			243
3	-	2119083-1			242
-	1	7-18023-7			241
-	1	2844940-1			238
-	REF	994970-2			164
-	1	2119641-2			151
-	1	2168083-8			144
-	4	2168083-9			143
-	1	1-1803583-0			141
-	1	1803516-1			140
-	1	1-18028-2			119
-	1	2844908-1			99
-	1	2844907-1			98
-	1	455888-4			82
-	1	5-547505-2			77
-	1	854769-4			74
-	1	1803607-3			71
-	1	2119740-1			67
-	2	2168078-1			66
-	1	5-18022-5			59
-	1	21028-2			58
-	1	1338685-1			56
-	2	1-2168083-0			53
-	1	5018030-1			52
-	1	811242-5			51
-	1	690753-2			50
-	1	18023-9			49
-	1	1803602-1			41
-	1	1752356-3			34
-	2	2079383-5			33
-	2	2-2844962-6			30
-	1	2844992-1			29
-	1	455888-3			28
-	1	1320928-2			24
-	1	2168083-2			21
-	1	1-18028-2			20
-	1	2119533-1			19
1	-	2119806-1			13
-	1	3-22280-3			12
-	1	1-356885-4			11
-	1	2119805-1			10
-	1	1803095-6			9
1	1	1333207-8			8
-	-	-			7
-	-	-			6
-	1	1-2119780-1			5
-	1	1-238011-7			4
1	1	2-2119582-6			3
-	1	455888-4			2
1	1	456408-2			1

PACIFIC VERSION
 Shown on sheets 3 of 4 & 4 of 4
 (Atlantic version shown on sheets 1 of 4 & 2 of 4)

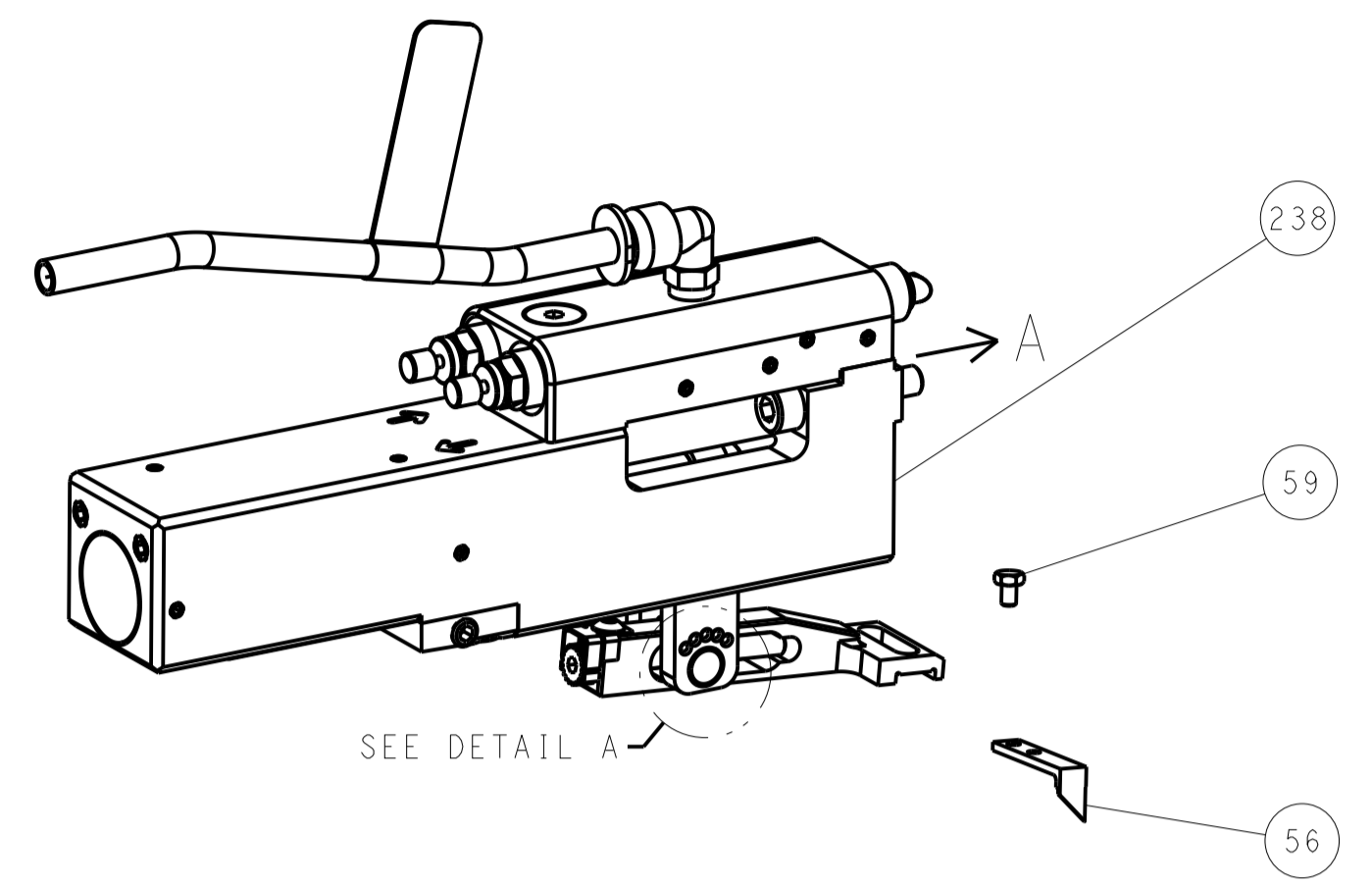
DIMENSIONS:		TOLERANCES UNLESS OTHERWISE SPECIFIED:		DWG: L. ZHANG 05SEP2012	
mm	0 PLC ±	1 PLC ±	2 PLC ±	3 PLC ±	4 PLC ±
ANGLES	FINISH	WT	SCALE	CAGE CODE DRAWING NO	
				A1 00779 C=2151245	
CUSTOMER DRAWING				SCALE 1:2 SHEET 3 OF 4 REV C	

STE TE Connectivity
 Harrisburg, PA 17105-3608
 Ocean Side Feed
 Applicator

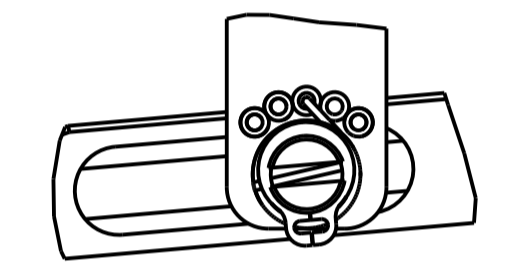
REVISONS		DATE	DWN	APVD
LOC	DIST			
A	66			
P	LTM	DESCRIPTION		
-	-	SEE SHEET 1	-	-

FEED TYPE

PNEUMATIC

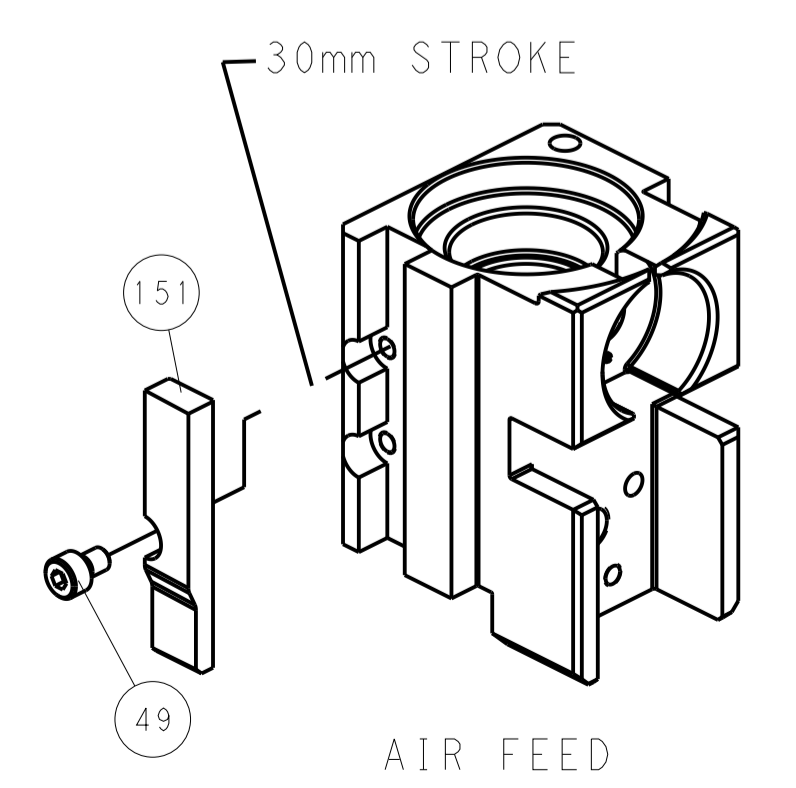


FEED SPRING SETTING POSITION (SHOWN FROM REAR SIDE)

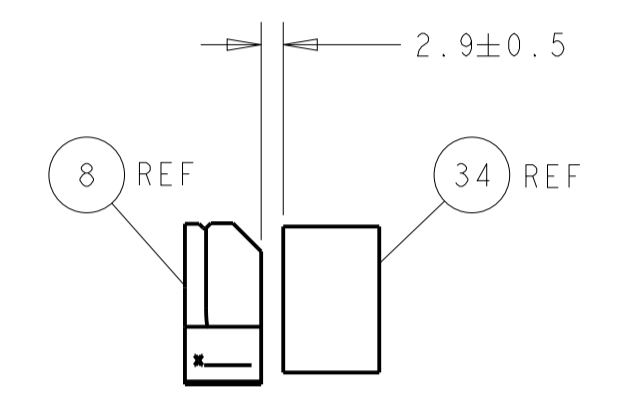
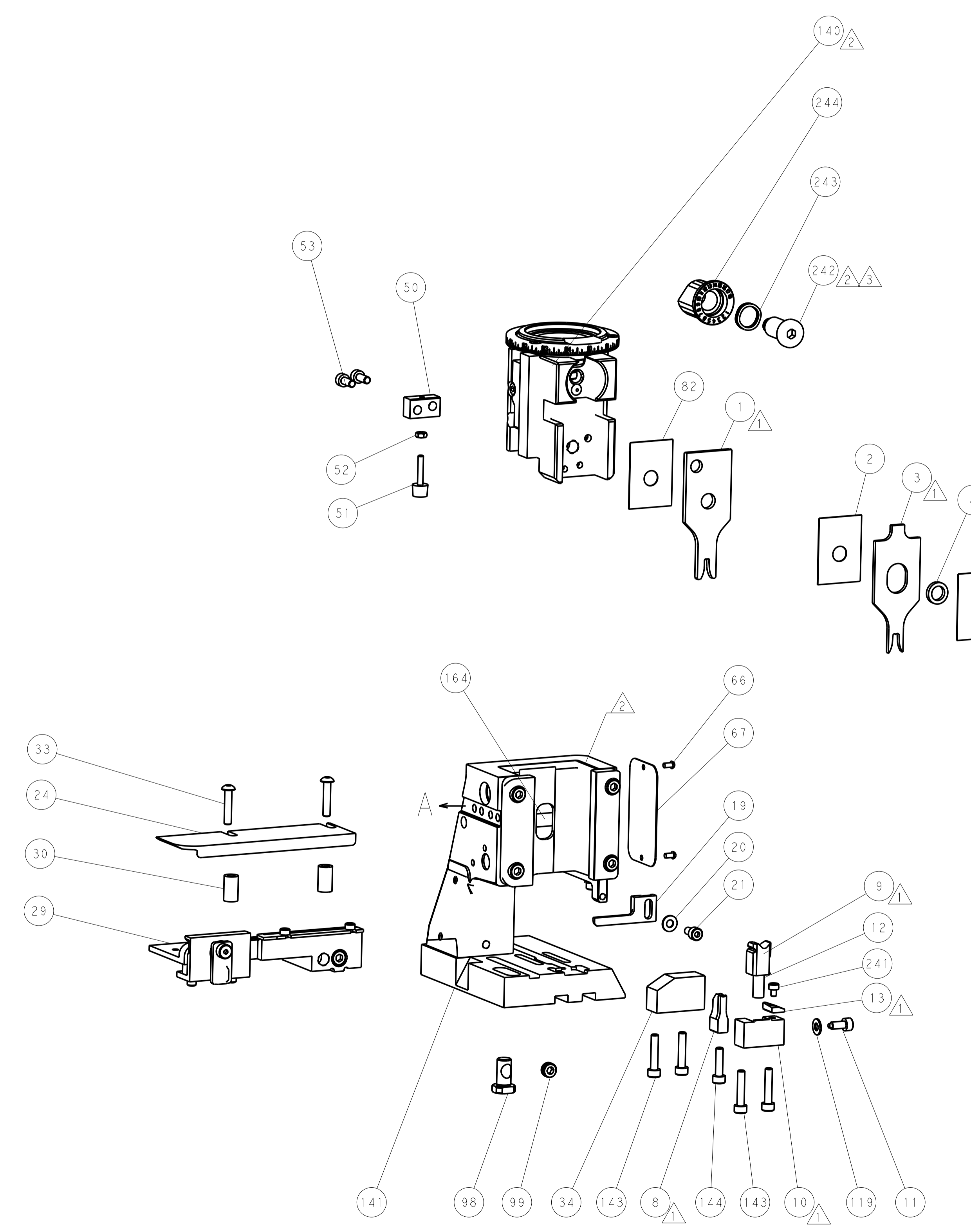


DETAIL A

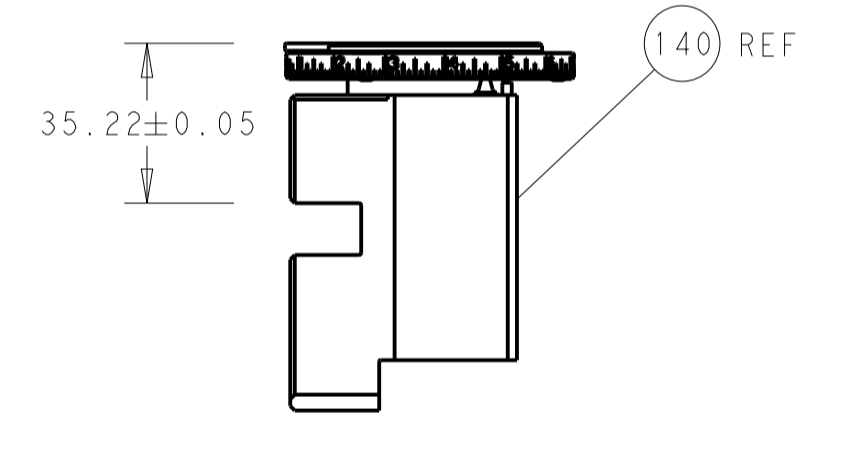
CAM POSITION



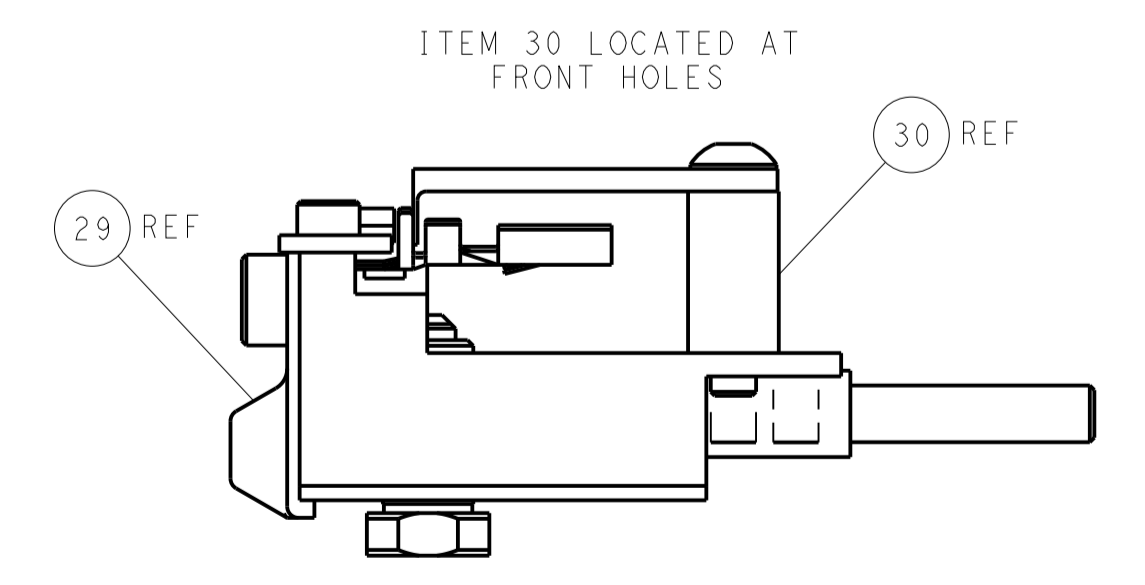
AIR FEED



TERMINAL SUPPORT LOCATION



RAM SET-UP



FEED TRACK POSITION
GUIDE BY INSULATION BARREL

PACIFIC VERSION
 Shown on sheets 3 of 4 & 4 of 4
 (Atlantic version shown on sheets 1 of 4 & 2 of 4)

DIMENSIONS: mm 		TOLERANCES UNLESS OTHERWISE SPECIFIED: 0 PLC ± 1 PLC ± 2 PLC ± 3 PLC ± 4 PLC ± ANGLES ±		DWN L. ZHANG 05SEP2012 CHK L. ZHANG 05SEP2012 APVD S. XI 05SEP2012 PRODUCT SPEC APPLICATION SPEC WEIGHT CUSTOMER DRAWING		NAME Ocean Side Feed Applicator SIZE CAGE CODE DRAWING NO. A1 00779 C=2151245 SCALE 1:2 SHEET 4 OF 4 REV C		TE Connectivity Harrisburg, PA 17105-3608	
-----------------------	--	---	--	--	--	--	--	--	--