

4

3

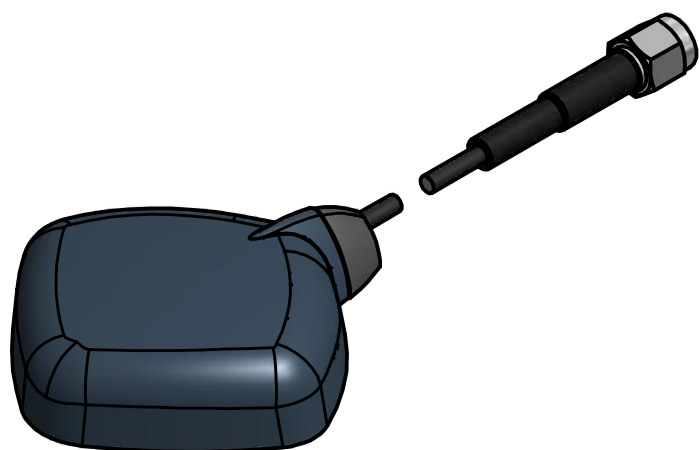
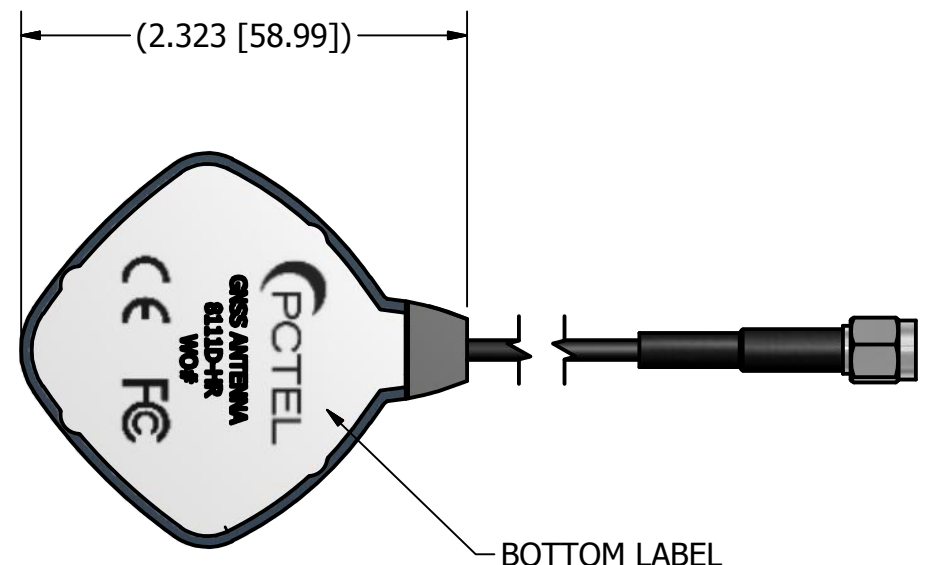
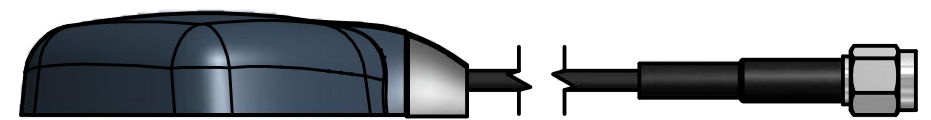
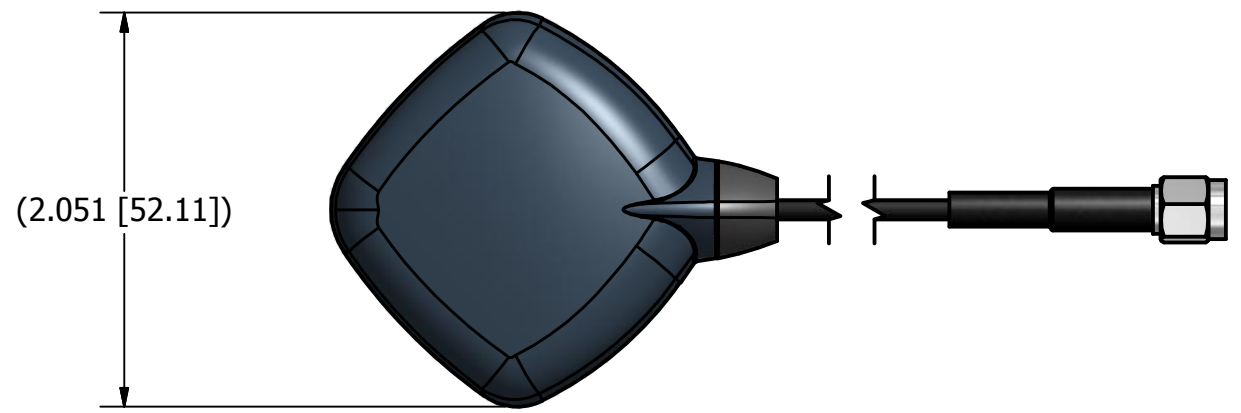
2

1

NOTES: UNLESS OTHERWISE SPECIFIED

- 1. THE GNSS MAGNETIC MOUNT ANTENNA INCLUDES AN ACTIVE GPS/GLONASS ANTENNA WITH AN OPTION FOR MAGNETIC OR SCREW MOUNT INSTALLATION. THE OPTIMUM LOCATION FOR MOUNTING THE GNSS PLUS IS A FLAT LEVEL SURFACE, FREE OF OBSTRUCTION, OFFERING A CLEAR VIEW OF THE HORIZON AND ABOVE IN ALL DIRECTIONS.
- 2. DIMENSIONS IN PARENTHESIS ARE FOR REFERENCE ONLY AND NO TOLERANCE IS IMPLIED.

REVISION HISTORY			
REV	DESCRIPTION	DATE	APPROVED
1	INITIAL DRAWING RELEASE	11/10/14	ZV



UNLESS OTHERWISE SPECIFIED DUAL DIMENSIONING XX.Xin [XX.Xmm]	DRAWN	DATE
	IP	7/10/2014
FOR TOLERANCES NOT SPECIFIED USE: X.X in ± .1 in, X.XX in ± .01 in, X.XXX in ± .005 in [X mm ± 3 mm], [X.X mm ± .3 mm], [X.XX mm ± .13 mm] ANGULAR ± 1°, FRACTIONAL ± 1/64	CHECKED	DATE
THIRD ANGLE PROJECTION	MATERIAL:	SEE COMPONENT PRINTS
	FINISH:	SEE COMPONENT PRINTS
<b>PCTEL PROPRIETARY DATA</b>		
THE INFORMATION AND/OR DRAWINGS CONTAINED IN THIS DOCUMENT IS CONFIDENTIAL AND PROPRIETARY TO PCTEL, INC. AND MAY NOT BE USED, REPRODUCED, IN WHOLE OR IN PART, OR MODIFIED IN ANY WAY WITHOUT THE EXPRESS WRITTEN PERMISSION OF AN AUTHORIZED REPRESENTATIVE OF PCTEL, INC.		

	PCTEL, INC. 471 BRIGHTON DRIVE BLOOMINGDALE, IL 60108 PH. 630-372-6800 FAX. 630-372-8077	
	DESCRIPTION GPS/GLONASS/QZSS/GALILEO HIGH REJECTION ANTENNA, 26 DB, 5M, SMA CONNECTOR	
DRAWING NO. ODD_8111D-HR		
SIZE	SCALE	SHEET
B	1:1	1 OF 1