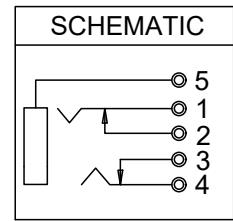
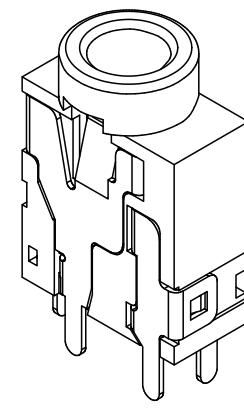
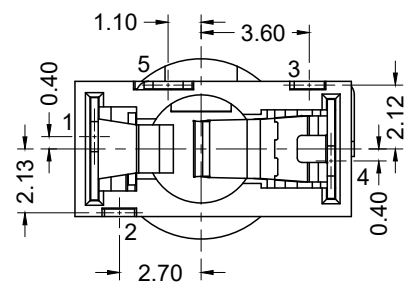


RECOMMENDED PCB LAYOUT (BOTTOM VIEW)



Material and Finish

Housing Material-
Thermoplastic
UL 94V-0 Rated

Contact Material-
Copper Alloy
Tin Plating

Electrical Characteristics

Contact Resistance:
Before Test: 50 milliohms max.
After Durability Test:
100 milliohms max.

Rated Voltage: 16V DC
Rated Current: 0.3A

Insulation Resistance:
100 Megohms min.
at 500V DC

Dielectric Strength:
500V AC RMS for 1 minute

Operating Temp:
-25°C to +85°C

PART NO:	COLOR	
STX-3790-5N	BLACK	
STX-3790-5N-577C	PANTONE 577C (GREEN)	
STX-3790-5N-284C	PANTONE 284C (BLUE)	
STX-3790-5N-157C	PANTONE 157C (ORANGE)	Discontinued
STX-3790-5N-701C	PANTONE 701C (PINK)	Discontinued

Tolerances

X.X ± 0.25
X.XX ± 0.15
Unless Stated
Otherwise



REV.	DATE	DESCRIPTION	REV. BY	CHK. BY	DRAWN BY	DATE
A2	1/23/08	Add Spec info.	WILL H.	H. MA	WILL H.	10/31/07
A3	11/18/08	Correct Part Number	S. Vien	H. MA		
A4	09/14/09	ECO #09-070	S. Vien	H. MA	UNITS	mm
A5	10/28/13	ECO #13-085	D. Gih	H. MA		
A6	08/14/18	Update Address	D. Shehan	N/A		
A7	10/12/22	Add Clearance Hole	C. Kelleher	Carl Furumasu		

STX-3790-5N

3.5mm Vertical Mount, 5 pin

RoHS Compliant

