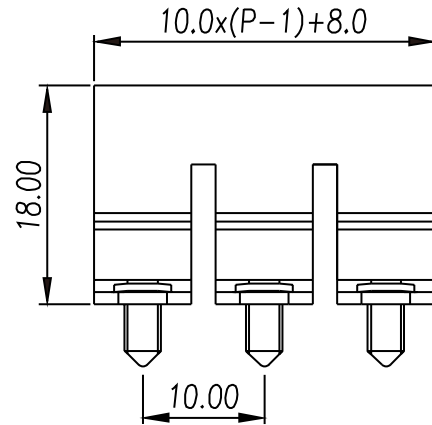
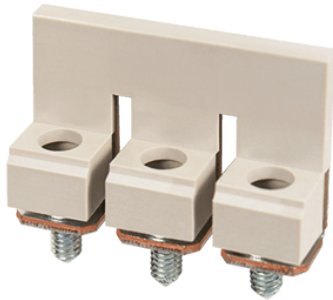


DS10-XXP



DIN Rail Terminal Blocks > Accessories > Screw-on bridge



Specification

Product description	Screw-on bridge
Color	Grey
Housing material	PA
Inflammability class	UL94-V0
Terminal material	Copper Alloy
Surface Plating	Tin plated
Position	02~10P
Compatible products	DK10 / DK10-TF / DK10-TFA
Package	50 pcs / box