

April 16, 2020

## Engineering Change Notification

This notice is to inform you of a change to the following products:

**NHD-7.0-800480EF-ASXN#**  
**NHD-7.0-800480EF-ASXN#-CTP**  
**NHD-7.0-800480EF-ASXN#-T**  
**NHD-7.0-800480EF-ASXV#**  
**NHD-7.0-800480EF-ASXV#-CTP**  
**NHD-7.0-800480EF-ASXV#-T**

**NHD-7.0-800480EF-ATXL#**  
**NHD-7.0-800480EF-ATXL#-CTP**  
**NHD-7.0-800480EF-ATXL#-T**  
**NHD-7.0-800480EF-ATXV#-B**  
**NHD-7.0-800480EF-CTXL#**

The TFT Panel and Driver IC used in the manufacturing of these products have changed for improvements in performance.

The old panel had a contrast ratio of 400:1. The new panel has a contrast ratio of **500:1**.

The Driver IC has changed from HX8264 to **EK9716**.

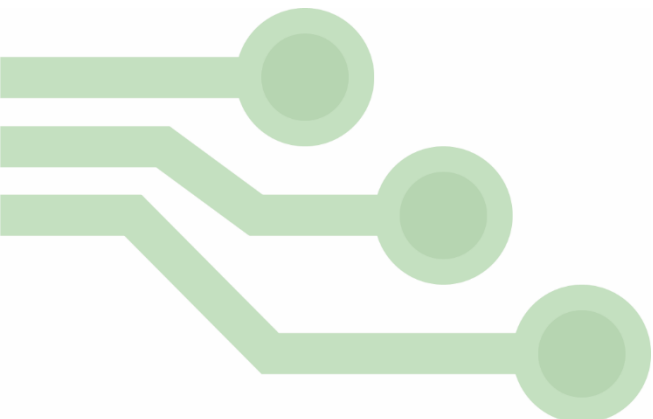
All our testing has found the new display to be backwards compatible with existing systems without the need for any hardware or software modifications.

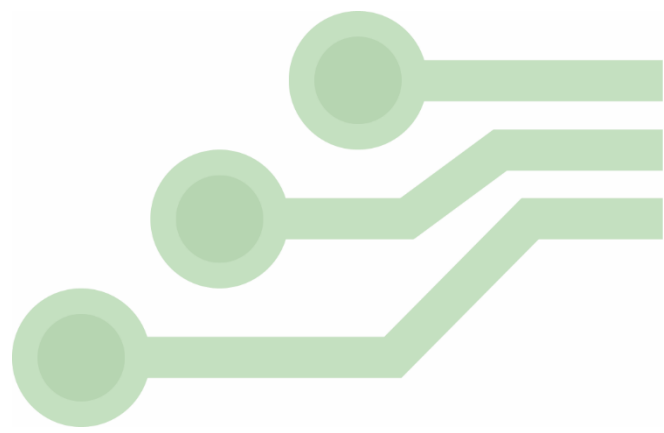
As with any compatible ICs made by different manufacturers, slight variations in timings and tolerances are present between the old and new driver ICs.

Please use the links below for a detailed comparison.

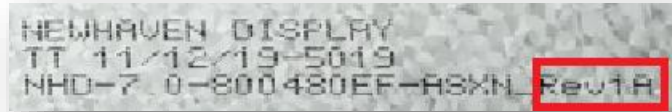
Old Driver IC Datasheet: [HX8264](#)

New Driver IC Datasheet: [EK9716](#)





The new displays will be labeled with a **Rev1A** identifier after the part number.



We understand that every customer's application is unique, and therefore we recommend our customers request new samples to test.

Please visit [www.newhavendisplay.com](http://www.newhavendisplay.com) or email [nhtech@newhavendisplay.com](mailto:nhtech@newhavendisplay.com) for further information or assistance with this change.

