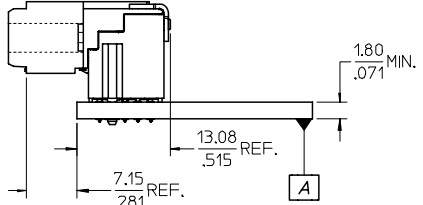
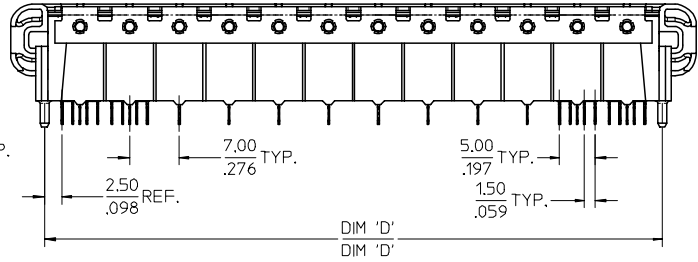
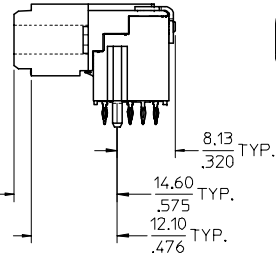
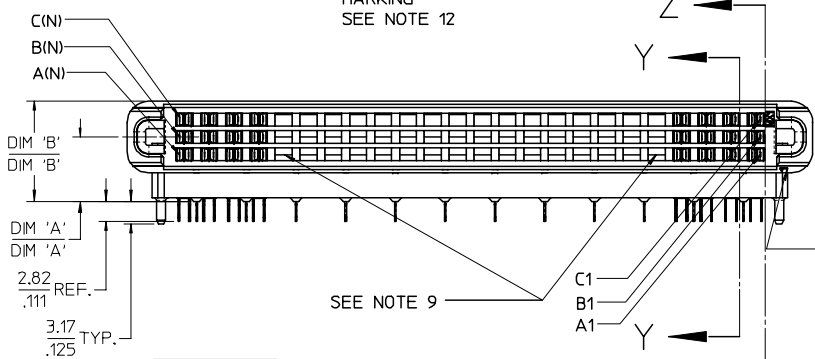
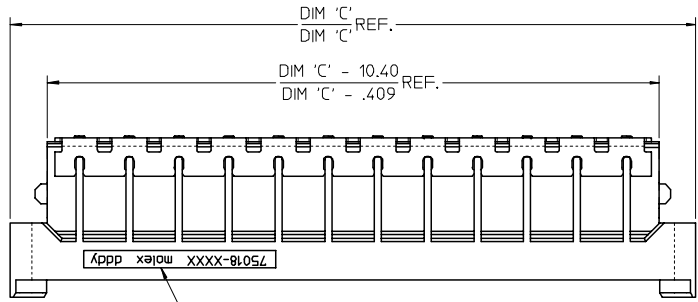
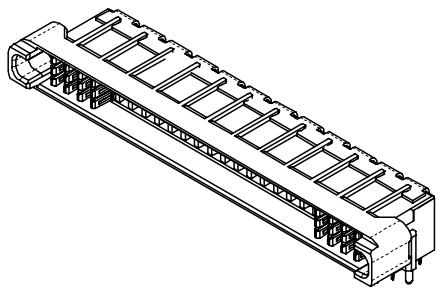


NOTES:

- 1) MATERIALS:
 HOUSING - LIQUID CRYSTAL POLYMER, UL94 V-0
 WAFER DIELECTRIC - LIQUID CRYSTAL POLYMER, UL94 V-0
 CONTACT - COPPER ALLOY
- 2) FINISHES:
 CONTACT INTERFACE
 0.76 MICRON MIN. SELECT GOLD
 1.27 MICRON MIN. NICKEL OVERALL
 COMPLIANT INTERFACE
 0.76 MICRON MIN. SELECT TIN OVER
 1.27 MICRON MIN. NICKEL OVERALL
 HOUSING
 0.10 MICRON MAX. IMMERSION GOLD OVER
 3.81 MICRON MIN. NICKEL OVER
 3.81 MICRON MIN. COPPER OVERALL
- 3) PRODUCT SPECIFICATION
 THIS PART CONFORMS TO MOLEX SPECIFICATION PS-75018-001.
- 4) PACKAGING SPECIFICATION
 THIS PART TO BE PACKAGED PER SPECIFICATION PK-75020-010.
- 5) APPLICATION SPECIFICATION
 THIS PART TO BE APPLIED PER SPECIFICATION PS-75018-001.
 APPLICATION TOOL AND INSTRUCTIONS PER AS-75018-001.
- 6) MATING INFORMATION
 THIS PART MATES WITH 75019-XXXX.
 WILL MATE WITH MAXIMUM 1.27mm MIS-ALIGNMENT.
 WILL MATE WITH MAXIMUM 0.5° MIS-ALIGNMENT.
- 7) FOR CIRCUIT DESIGNATION SEE SHEET 3
- 8) FOR PCB INFORMATION SEE SHEET 3
- 9) CIRCUITS IN THIS ZONE HAVE BEEN OMITTED TO SIMPLIFY THE MODEL. ACTUAL PRODUCT IS FULLY LOADED WITH TERMINALS.
- 10) APPLICATION TOOLING KEEP OUT AREA.
 NO COMPONENTS ALLOWED IN THIS AREA.
- 11) CONFORMS TO MOLEX COSMETIC SPECIFICATION PS-75005-002.
- 12) MARKING: PART NUMBER, MOLEX LOGO, DATE CODE
- 13) RECOMMENDED DRILL SIZE 0.66±0.03 TO YIELD FINISHED PLATED THROUGH HOLE OF 0.55±0.05



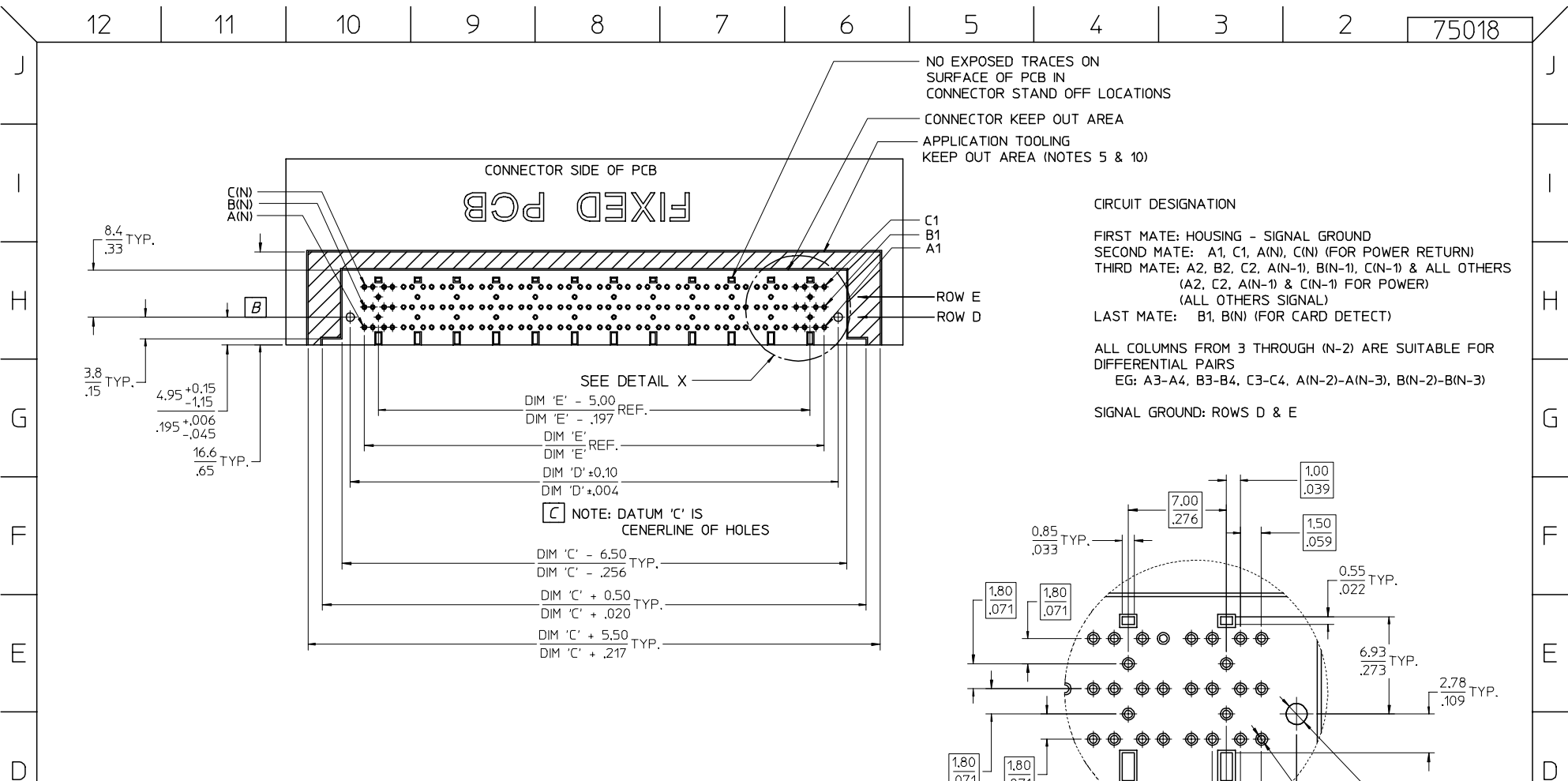
EC NO: UCP2004-1631 DRWN: KLANG 2004/04/27 CHKD: 2004/04/28 APPR: MBANAKIS2004/04/29	QUALITY SYMBOLS	GENERAL TOLERANCES (UNLESS SPECIFIED)		SCALE 2:1	DESIGN UNITS METRIC	THIRD ANGLE PROJECTION	REVISE ON CAD ONLY	
	DESCRIPTION A2		mm	INCH	DIMENSION STYLE MM/IN		TITLE	
		4 PLACES ± --- ± --- 3 PLACES ± --- ± .005 2 PLACES ± 0.13 ± .01 1 PLACE ± 0.25 ± ---			DRAWN BY LANG	DATE 03-OCT-29	HIGH SPEED DOCKING FIXED CONNECTOR NO GROUND FINGER MOLEX INCORPORATED	
		ANGULAR ±1/2°			CHECKED BY LANG	DATE 03-OCT-29		MATERIAL NO. SEE SHEET 2
DRAFT WHERE APPLICABLE MUST REMAIN WITHIN DIMENSIONS				APPROVED BY BANAKIS	DATE 03-OCT-29	SHEET NO. 1 OF 3		

J
I
H
G
F
E
D
C
B
A

J
I
H
G
F
E
D
C
B
A

ITEM NUMBER	CIRCUIT SIZE	NO. OF COLUMNS 'N'	CENTERLINE DIMENSION 'A' mm(in)	O/A HEIGHT DIMENSION 'B' mm(in)	O/A LENGTH DIMENSION 'C' mm(in)	PEG TO PEG DIMENSION 'D' mm(in)	FIRST-LAST DIMENSION 'E' mm(in)
75018-0021	144	48	4.74 (.187)	9.78 (.385)	96.50 (3.799)	87.00 (3.425)	82.00 (3.228)
75018-0022	144	48	5.74 (.226)	10.78 (.424)	96.50 (3.799)	87.00 (3.425)	82.00 (3.228)
75018-0023	144	48	8.74 (.344)	13.78 (.543)	96.50 (3.799)	87.00 (3.425)	82.00 (3.228)
75018-0026	120	40	4.74 (.187)	9.78 (.385)	82.50 (3.248)	73.00 (2.874)	68.00 (2.677)
75018-0024	108	36	4.74 (.187)	9.78 (.385)	75.50 (2.972)	66.00 (2.598)	61.00 (2.402)
75018-0025	108	36	8.74 (.344)	13.78 (.543)	75.50 (2.972)	66.00 (2.598)	61.00 (2.402)
75018-0027	108	36	5.74 (.226)	10.78 (.424)	75.50 (2.972)	66.00 (2.598)	61.00 (2.402)

EC NO: UCP2004-1631 DRWN: KLANG 2004/04/27 CHKD: 2004/04/28 APPR: MBANAKIS2004/04/29	DESCRIPTION REV	QUALITY SYMBOLS	GENERAL TOLERANCES (UNLESS SPECIFIED)	SCALE 1:1	DESIGN UNITS METRIC	THIRD ANGLE PROJECTION	REVISE ON CAD ONLY	
		▼ -0 ◻ -0	mm INCH 4 PLACES ± --- ± --- 3 PLACES ± --- ± .005 2 PLACES ± 0.13 ± .01 1 PLACE ± 0.25 ± --- ANGULAR ±1/2°	DIMENSION STYLE MM/IN		TITLE		
		DRAFT WHERE APPLICABLE MUST REMAIN WITHIN DIMENSIONS	DRAWN BY DATE LANG 03-OCT-29 CHECKED BY DATE LANG 03-OCT-29 APPROVED BY DATE BANAKIS 03-OCT-29	HIGH SPEED DOCKING FIXED CONNECTOR NO GROUND FINGER MOLEX INCORPORATED		MATERIAL NO. SEE CHART	DOCUMENT NO. SD-75018-011	SHEET NO. 2 OF 3
		THIS DRAWING CONTAINS INFORMATION THAT IS PROPRIETARY TO MOLEX INCORPORATED AND SHOULD NOT BE USED WITHOUT WRITTEN PERMISSION						

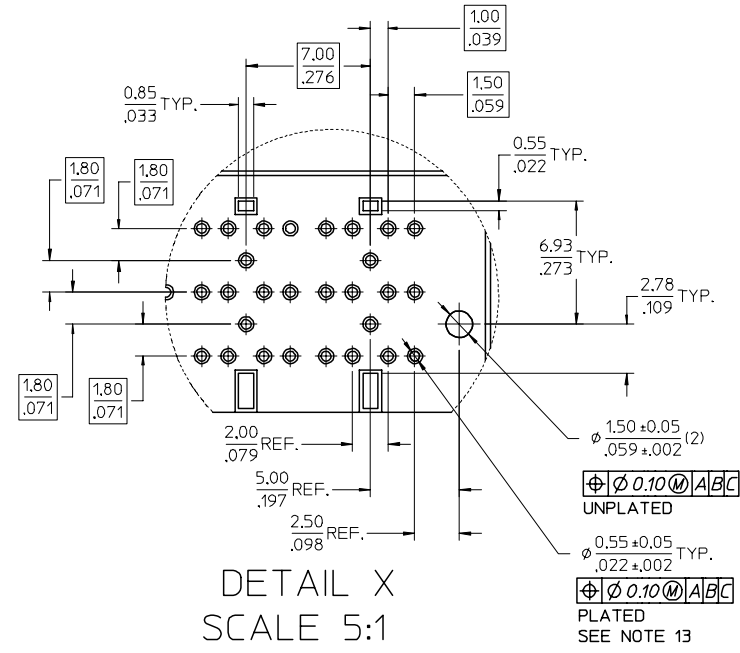


CIRCUIT DESIGNATION

FIRST MATE: HOUSING - SIGNAL GROUND
SECOND MATE: A1, C1, A(N), C(N) (FOR POWER RETURN)
THIRD MATE: A2, B2, C2, A(N-1), B(N-1), C(N-1) & ALL OTHERS (A2, C2, A(N-1) & C(N-1) FOR POWER) (ALL OTHERS SIGNAL)
LAST MATE: B1, B(N) (FOR CARD DETECT)

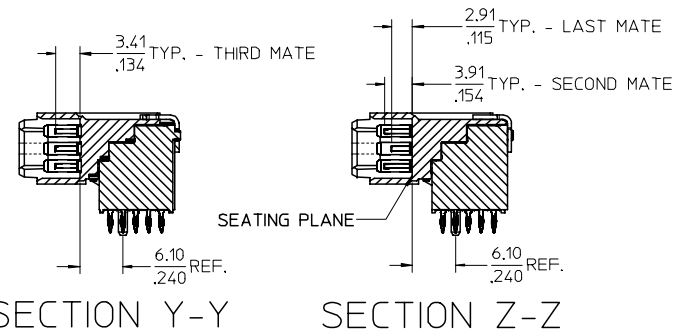
ALL COLUMNS FROM 3 THROUGH (N-2) ARE SUITABLE FOR DIFFERENTIAL PAIRS
EG: A3-A4, B3-B4, C3-C4, A(N-2)-A(N-3), B(N-2)-B(N-3)

SIGNAL GROUND: ROWS D & E



NOMINAL WIPE - FULL SEATED

FIRST MATE: 5.2mm
SECOND MATE: 2.7mm
THIRD MATE: 2.2mm
LAST MATE: 1.7mm



ELC NO: UCP2004-1631 DRWN: KLANG 2004/04/27 CHKD: 2004/04/28 APPR: MBANAKIS2004/04/29	QUALITY SYMBOLS	GENERAL TOLERANCES (UNLESS SPECIFIED)	SCALE 2:1	DESIGN UNITS METRIC	THIRD ANGLE PROJECTION	REVISE ON CAD ONLY
	▽ - 0 ◻ - 0	4 PLACES ± --- ± --- 3 PLACES ± --- ± .005 2 PLACES ± 0.13 ± .01 1 PLACE ± 0.25 ± --- ANGULAR ±1/2°	DIMENSION STYLE MM/IN	TITLE	HIGH SPEED DOCKING FIXED CONNECTOR NO GROUND FINGER	
A2	DRAFT WHERE APPLICABLE MUST REMAIN WITHIN DIMENSIONS	DRAWN BY DATE LANG 03-OCT-29 CHECKED BY DATE LANG 03-OCT-29 APPROVED BY DATE BANAKIS 03-OCT-29	MATERIAL NO. SEE SHEET 2	DOCUMENT NO. SD-75018-011	SHEET NO. 3 OF 3	MOLEX INCORPORATED
	THIS DRAWING CONTAINS INFORMATION THAT IS PROPRIETARY TO MOLEX INCORPORATED AND SHOULD NOT BE USED WITHOUT WRITTEN PERMISSION					