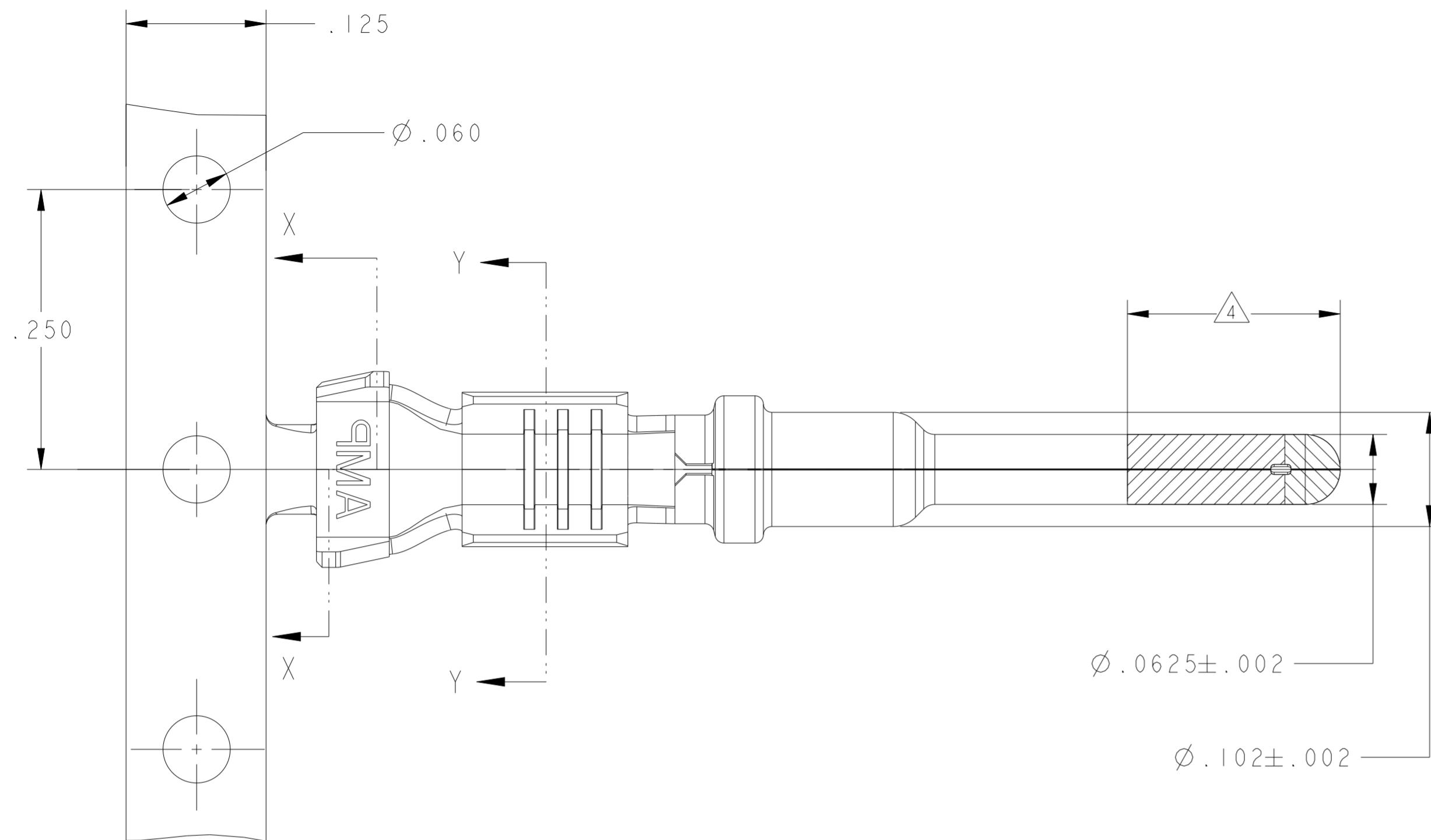
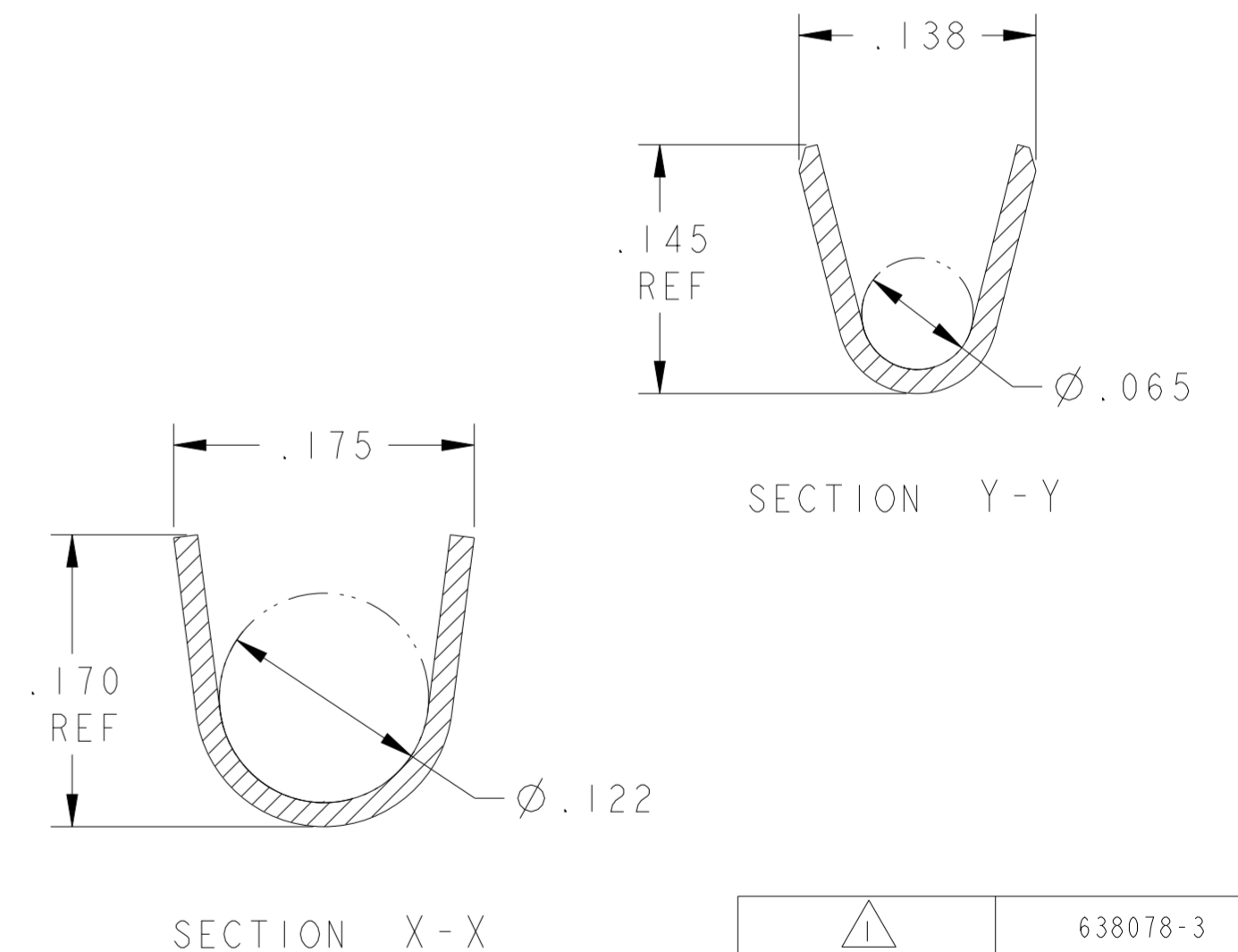
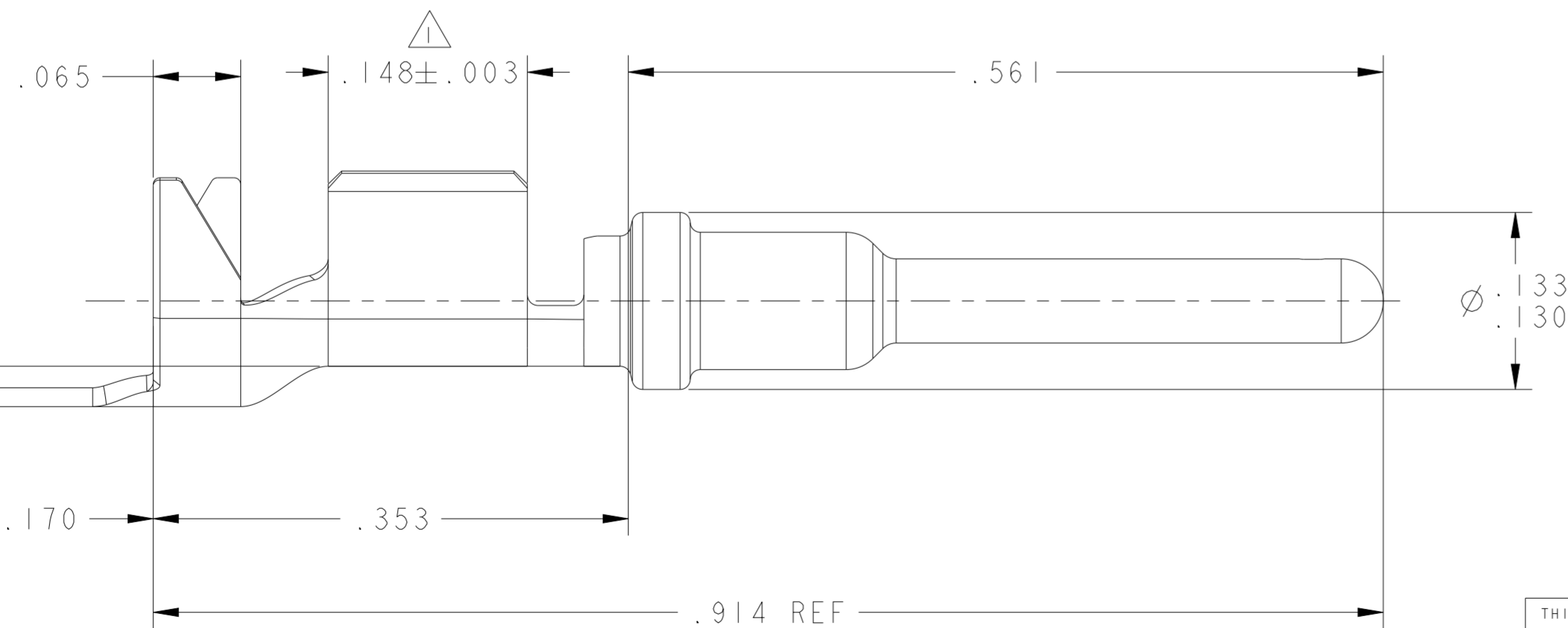


REVISIONS					
P	LTR	DESCRIPTION	DATE	DWN	APVD
E2		REVISED PER ECO-11-005030	11MAR2011	RK	HMR
E3		REVISED PER PCN-22-148530	27JUL2022	SN	FC



- $\triangle 1$ FINISH : PLATE 0.000100-0.000200 THK TIN IN LOCALIZED TIN PLATE AREA ALL OVER
0.000040-0.000080 THK NICKEL.
- 2. CONTACT WILL BE LUBED WITH LUBRICANT PER P/N 22014-4.
- 3. WIRE RANGE: 18-14 AWG GLX AND 18-16 AWG SXL WIRE WITH INSL DIAMETERS OF 0.089-0.131 INCHES.
- $\triangle 4$ PLATE 0.000030 MIN THK SELECT GOLD IN LOCALIZED PLATE AREA.



$\triangle 1$	638078-3
$\triangle 1$ $\triangle 4$	638078-1
FINISH	PART NUMBER

THIS DRAWING IS A CONTROLLED DOCUMENT.		DWN P. YEAGER 13JUN1997	STE TE Connectivity		
DIMENSIONS: INCHES		CHK W. LONG 13JUN1997			
TOLERANCES UNLESS OTHERWISE SPECIFIED:		APVD W. LONG 13JUN1997	NAME PIN CONTACT		
0 PLC \pm	1 PLC \pm	PRODUCT SPEC	-		
2 PLC $\pm .02$	3 PLC $\pm .005$	APPLICATION SPEC	-		
4 PLC \pm	ANGLES \pm	WEIGHT	-		
MATERIAL 0.014 TK CU ALLOY	FINISH -	CUSTOMER DRAWING	SIZE A2	CAGE CODE 00779	DRAWING NO C-638078
			SCALE 10:1	SHEET 1	REV E3