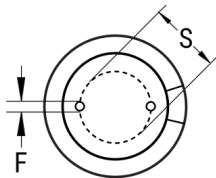


SIDE VIEW



TERMINAL END VIEW



Click [here](#) for the 3D model.

Dimensions	
D	5mm +/-0.5mm
L	7mm +1.5mm
S	2mm +/-0.5mm
LL Negative	15mm MIN
LL Positive	20mm MIN
F	0.45mm NOM

Packaging Specifications	
Packaging	Bulk, Bag
Packaging Quantity	10000

General Information

Series	ESY
Dielectric	Aluminum Electrolytic
Description	LowZ Single Ended Aluminum Electrolytic
Features	Low Profile(7mm)
RoHS	Yes
Lead	Wire Leads
AEC-Q200	No

Specifications

Capacitance	6.8 uF
Capacitance Tolerance	20%
Voltage DC	50 VDC, 63 VDC (Surge)
Temperature Range	-40/+105°C
Rated Temperature	105°C
Life	1000 Hrs
Dissipation Factor	10%
Resistance	0.74 Ohms (100kHz)
Ripple Current	170 mAmps (100kHz 105C)
Leakage Current	3.4 uA (2min 20°C)
Impedance Ratio at -25C	2
Impedance Ratio at -40C	3