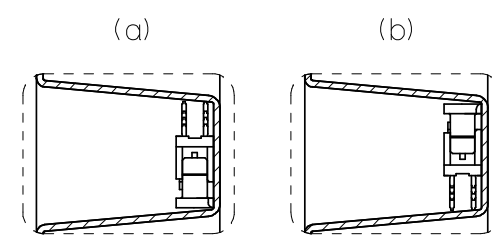


△ 4 DETAIL A  
(SCALE 2:1)



△ 4 DETAIL B  
(SCALE 2:1)

注記

1. 一般公差: ±0.5  
GENERAL TOLERANCES: ±0.5
2. 各部の反りは2.0MAX.  
WARP 2.0MAX.
3. 梱包数: 梱包仕様書「SPK-52030-001」参照  
PACKAGING QUANTITY: PACKAGING SPEC. 「SPK-52030-001」  
△ 4 トレイの中の製品の向きは(a)又は(b)とし、かつ同一トレイ中の製品の向きはどちらか一方で統一  
PRODUCT DIRECTION SHOULD BE (a) OR (b).  
ALL PRODUCTS MUST FACED THE SAME DIRECTION IN THE TRAY.

52030-\*\*29  
適用製品番号  
APPLICABLE PART No.

RELEASED EC NO: J2008-4/59 DRWN: YOKUZONO 2008/06/17 CHKD: HARUYAMA 2008/06/17 APPR: NUKITA 2008/06/17	GENERAL TOLERANCES (UNLESS SPECIFIED)		DIMENSION STYLE MM ONLY	SCALE 1:2	DESIGN UNITS METRIC	THIRD ANGLE PROJECTION
	10 UNDER	±---	DRAWN BY Y. TOKUZONO	DATE 2008/6/5	TRAY FOR 52030 (1.0 FPC CONN. ZIF. ST.)	
10 OVER 30 UNDER	±---	CHECKED BY T. HARUYAMA	DATE 2008/6/5			
30 OVER	±---	APPROVED BY N. UKITA	DATE 2008/6/5	MOLEX INCORPORATED		
ANGULAR	±---°	MATERIAL NO. 098910031	DOCUMENT NO. SD-52030-020	SHEET NO. 1 OF 1		
DRAFT WHERE APPLICABLE MUST REMAIN WITHIN DIMENSIONS		SIZE A3	THIS DRAWING CONTAINS INFORMATION THAT IS PROPRIETARY TO MOLEX INCORPORATED AND SHOULD NOT BE USED WITHOUT WRITTEN PERMISSION			