


APPLICABLE STANDARD					
RATING	OPERATING TEMPERATURE RANGE	-30°C TO +85°C	STORAGE TEMPERATURE RANGE	-30°C TO +85°C NO CONDENSATION	
	POWER	2 W ※2	CHARACTERISTIC IMPEDANCE	50 Ω	
	FREQUENCY RANGE	DC TO 2500 MHz	OPERATING HUMIDITY RANGE	% TO 90%	
SPECIFICATIONS					
ITEM	TEST METHOD		REQUIREMENTS	QT	AT
CONSTRUCTION					
GENERAL EXAMINATION	VISUALLY AND BY MEASURING INSTRUMENT.		ACCORDING TO DRAWING.	×	×
MARKING	CONFIRMED VISUALLY.				
ELECTRIC CHARACTERISTICS					
CONTACT RESISTANCE	100mA DC MAX.		CENTER 75 mΩ MAX. OUTER 50 mΩ MAX.	×	×
INSULATION RESISTANCE	100V DC.		1000 MΩ MIN.	×	-
VOLTAGE PROOF	100V AC FOR 1 min.		NO INSULATION DETRUCTION	×	×
V.S.W.R. ※1	FREQUENCY DC TO 2000 MHz	1.3 MAX		×	-
	FREQUENCY 2000 TO 2500 MHz	1.5 MAX			
INSERTION LOSS ※1	FREQUENCY DC TO 1000 MHz	0.3 dB MAX.		×	-
	FREQUENCY 1000 TO 2000 MHz	0.4 dB MAX.			
	FREQUENCY 2000 TO 2500 MHz	0.6 dB MAX.			
ISOLATION ※1	FREQUENCY DC TO 1000 MHz	20 dB MIN.		×	-
	FREQUENCY 1000 TO 2000 MHz	14 dB MIN.			
	FREQUENCY 2000 TO 2500 MHz	12 dB MIN.			
MECHANICAL CHARACTERISTICS					
DURABILITY ※1	10000 TIMES INSERTIONS AND EXTRACTIONS. AT THE CONDITION A: DC ~ 2000MHz B: 2000MHz ~ 2500MHz		1) CONTACT RESISTANCE : CENTER :100 mΩMAX. OUTER : 75 mΩMAX. 2) V.S.W.R. A : 1.5 MAX B : 1.7 MAX 3)INSERTION LOSS A : 0.5 dB MAX B : 0.7dB MAX 4)MUST NOT HAVE HEAVY CORROSION.	×	-
VIBRATION	FREQUENCY : 10 TO 55 Hz SINGLE AMPLITUDE : 0.75mm 1 CYCLE : 5 min , 10 CYCLES FOR EACH 3 DIRECTIONS.		1) NO ELECTRICAL DISCONTINUITY OF 10μs. 2) CONTACT RESISTANCE : CENTER :100mΩMAX. OUTER : 75 mΩMAX. 3) NO DAMAGE, CRACK AND LOOSENESS OF PARTS.	×	-
SHOCK	ACCELERETION : 490 m/s ² DURATION : 11ms , HALH SINE WAVE 3 TIMES FOR EACH 3 DIRECTIONS.		1) NO ELECTRICAL DISCONTINUITY OF 10μs. 2) CONTACT RESISTANCE : CENTER :100mΩMAX. OUTER : 75 mΩMAX. 3) NO DAMAGE, CRACK AND LOOSENESS OF PARTS.	×	-
	COUNT	DESCRIPTION OF REVISIONS	DESIGNED	CHECKED	DATE
△					
REMARK			APPROVED	KJ. KAWAMURA	06.05.17
※1 STD VALUE NOMAL CLOSED : RECEPTACLE NOMAL OPEN : RECEPTACLE + PLUG			CHECKED	RZ. KANO	06.05.17
※2 TO BE SATISFIED SPECIFICATION WITH INPUT POWER FOR 4W FOR 1/8 DUTY.			DESIGNED	YH. MATSUO	06.05.16
Unless otherwise specified, refer to JIS C 5402.			DRAWN	YH. MATSUO	06.05.16
Note QT:Qualification Test AT:Assurance Test ×:Applicable Test			DRAWING NO.	ELC4-180563-00	
HRS	SPECIFICATION SHEET		PART NO.	MS-145NB	
	HIROSE ELECTRIC CO., LTD.		CODE NO.	CL358-0223-7-00	△ 1/2

SPECIFICATIONS					
ITEM	TEST METHOD	REQUIREMENTS	QT	AT	
ENVIRONMENTAL CHARACTERISTICS					
RAPID CHANGE OF TEMPERATURE	TEMPERATURE -55 → 15~35 → 85 → 15~35 °C TIME 30 → 2~3 → 30 → 2~3 min TEST UNDER 5 CYCLES AND LEAVE IT FOR ONE HOUR OR TWO.	1)CONTACT RESISTANCE: CENTER : 100 mΩ MAX OUTER : 75 mΩ MAX. 2)INSULATION RESISTANCE. 10 M Ω MIN 3)NO DAMAGE, CRACK AND LOOSENESS OF PARTS.	x		—
DAMP HEAT (STEADY STATE)	EXPOSED AT 40 °C, 90 ~95 %, 96h. THEN LEAVE IT FOR ONE HOUR OR TWO IN THE AMBIENT TEMPERARURE AND HUMIDITY.	1)CONTACT RESISTANCE: CENTER : 100 mΩ MAX. OUTER : 75 mΩ MAX. 2)INSULATION RESISTANCE. 10 M Ω MIN 3)NO DAMAGE, CRACK AND LOOSENESS OF PARTS.	x		—
SALT SPRAY (CORROSION)	AFTER 5±1% SALT WATER SPRAY FOR 48 HOURS. TEMPERATURE 35 ± 2 °C	1)CONTACT RESISTANCE: CENTER : 100 mΩ MAX. OUTER : 75 mΩ MAX 2)MUST NOT HAVE HEAVY CORROSION	x		—
RESISTANCE TO SOLDER HEAT	SOLDER TEMPERATURE 260°C FOR IMMERSION DURATION 10 sec.	NO DAMAGE, CRACK AND LOOSENESS OF PARTS.	x		—
Note QT:Qualification Test AT:Assurance Test ×:Applicable Test		DRAWING NO.	ELC4-180563-00		
HRS	SPECIFICATION SHEET	PART NO.	MS-145NB		
	HIROSE ELECTRIC CO., LTD.	CODE NO	CL358-0223-7-00		2/2

DRAWING FOR REFERENCE: This is subject to change without notice

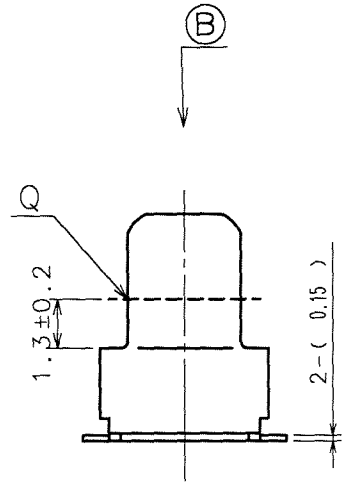
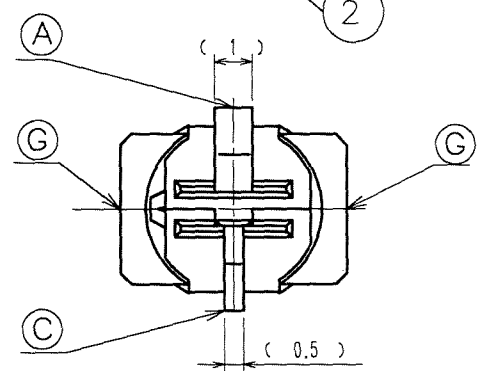
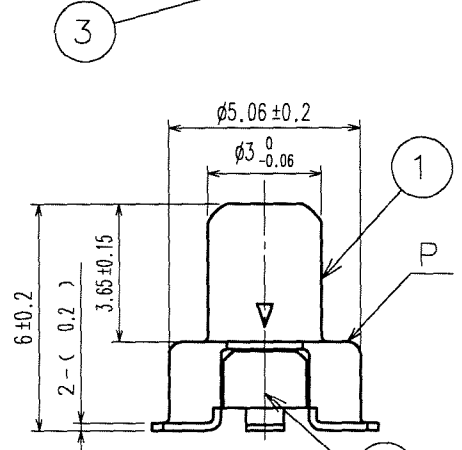
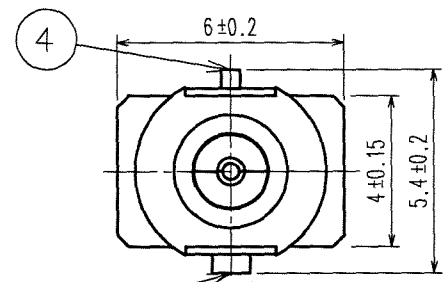
2007/03/03 01:39:00 ctribble

FORM HD0011-2-2

2007/03/03 01:39:00 ctribble

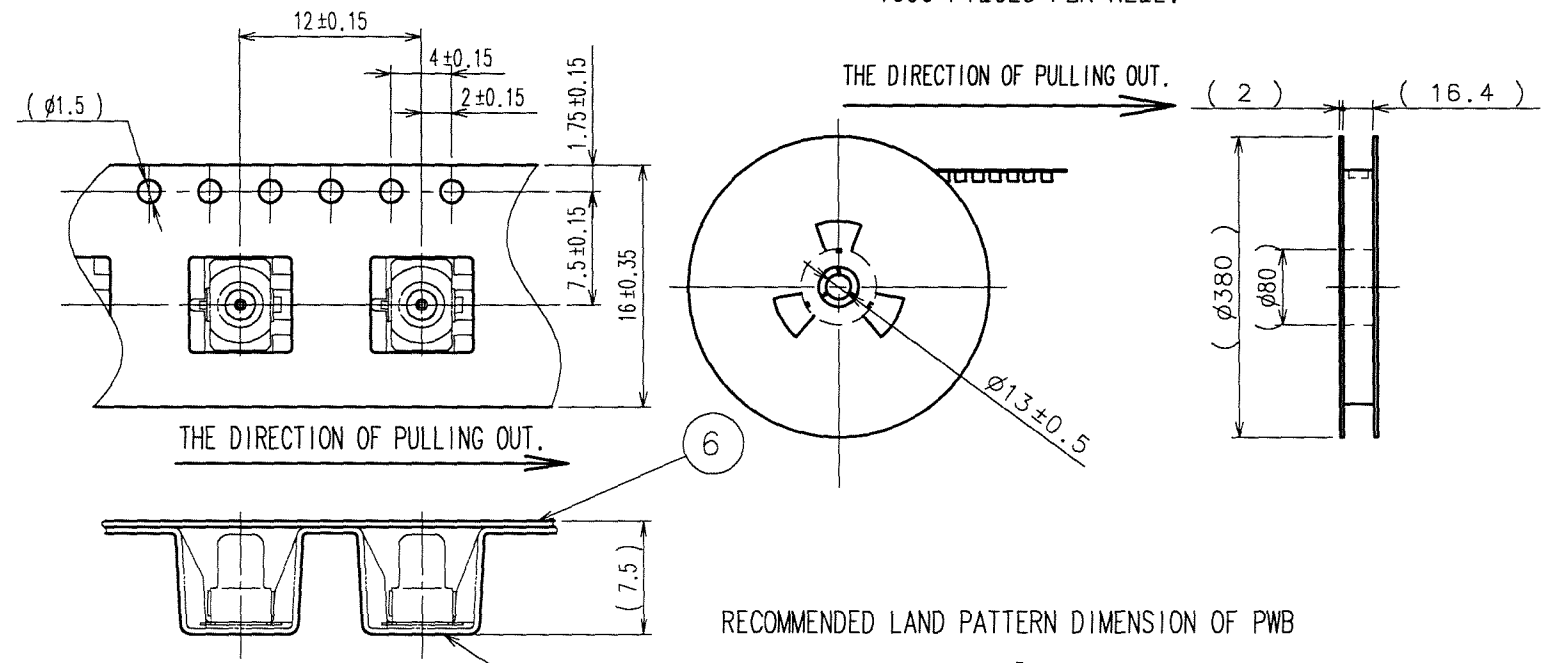
DRAWING FOR REFERENCE: This is subject to change without notice

COUNT	DESCRIPTION OF REVISIONS	BY	CHKD	DATE	COUNT	DESCRIPTION OF REVISIONS	BY	CHKD	DATE

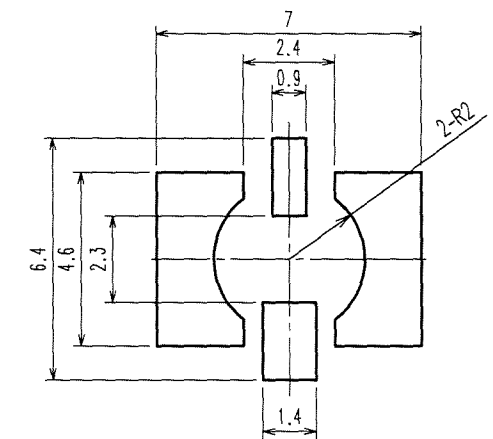


TAPE AND REEL PACKING (FREE)

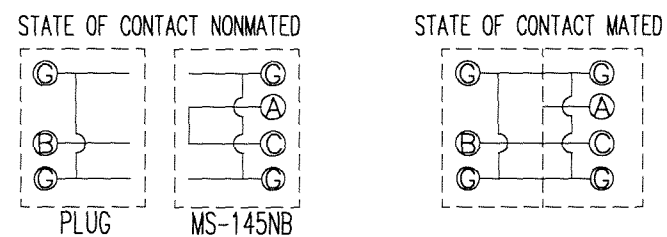
1000 PIECES PER REEL.



RECOMMENDED LAND PATTERN DIMENSION OF PWB



NOTE 1. USE THIS PRODUCT WITH MS-145-HRMJ/MS-145-HRMP-A/MS-145-C(LP)-A/MS-145-C(LP)-1 AND EQUIVALENT CONTACT MATED.
 FOR THE USE OF MS-145-HRMJ, MS-145-C(LP)-A AND EQUIVALENT, PUSH THEM ON THE POSITION P.
 FOR THE USE OF MS-145-C(LP)-1, PUSH THIS ON THE POSITION Q.
 POSITION Q MUST BE NOMINAL STOP POSITION AS YOUR SET DESIGN.
 USE WITH THE STRUCTURE WHICH ALWAYS KEEP IN TOUCH TO THE POSITION P OR Q, OR WITH LOCK STRUCTURE.
 2. COAXIAL SWITCH CIRCUIT SHALL BE AS FOLLOWS:



- 3. LEAD CO-PLANARITY TO BE 0.15 MAX.
- 4. THIS PRODUCT IS IMPOSSIBLE TO WASH.
- 5. AVOID SHOCKING TO THIS PRODUCT DIRECTLY.

3	BERYLLIUM COPPER	OTHERS: NICKEL PLATING	6	PS-E	TOP COVER TAPE
		SMT AREA: GOLD PLATING	5	PS-E	EMBOSSSED CARRIER TAPE
		CONTACT AREA: GOLD PLATING			
2	POLYAMIDE	BLACK UL94HB	4	BERYLLIUM COPPER	OTHERS: NICKEL PLATING
1	PHOSPHOR BRONZE	GOLD PLATING			SMT AREA: GOLD PLATING
					CONTACT AREA: GOLD PLATING
NO.	MATERIAL	FINISH, REMARKS	NO.	MATERIAL	FINISH, REMARKS

CODE NO. (OLD)	DRAWN	DESIGNED	CHECKED	APPROVED	RELEASED
	<i>Y. Matsumoto</i>	<i>Y. Matsumoto</i>	<i>R. Kanno</i>	<i>H. Kawamura</i>	
	'06.5.16	'06.5.16	'06.5.17	'06.5.17	

SCALE	DRAWING NO.	PART NO.
5 : 1	EDC3-180563	MS-145NB
UNITS	CODE NO.	
mm	CL358-0223-7	

HRS HIROSE ELECTRIC CO., LTD.