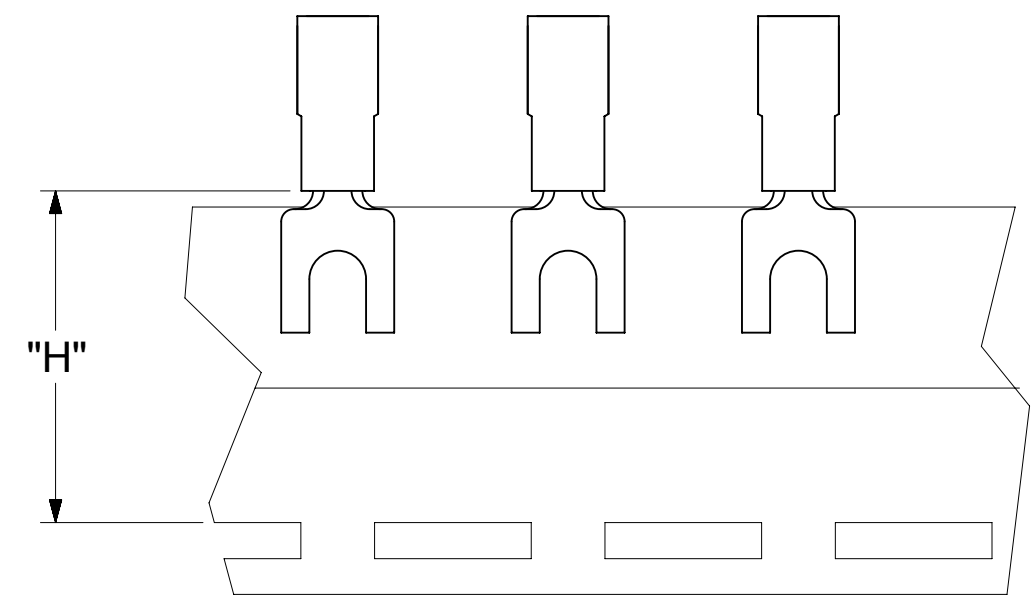
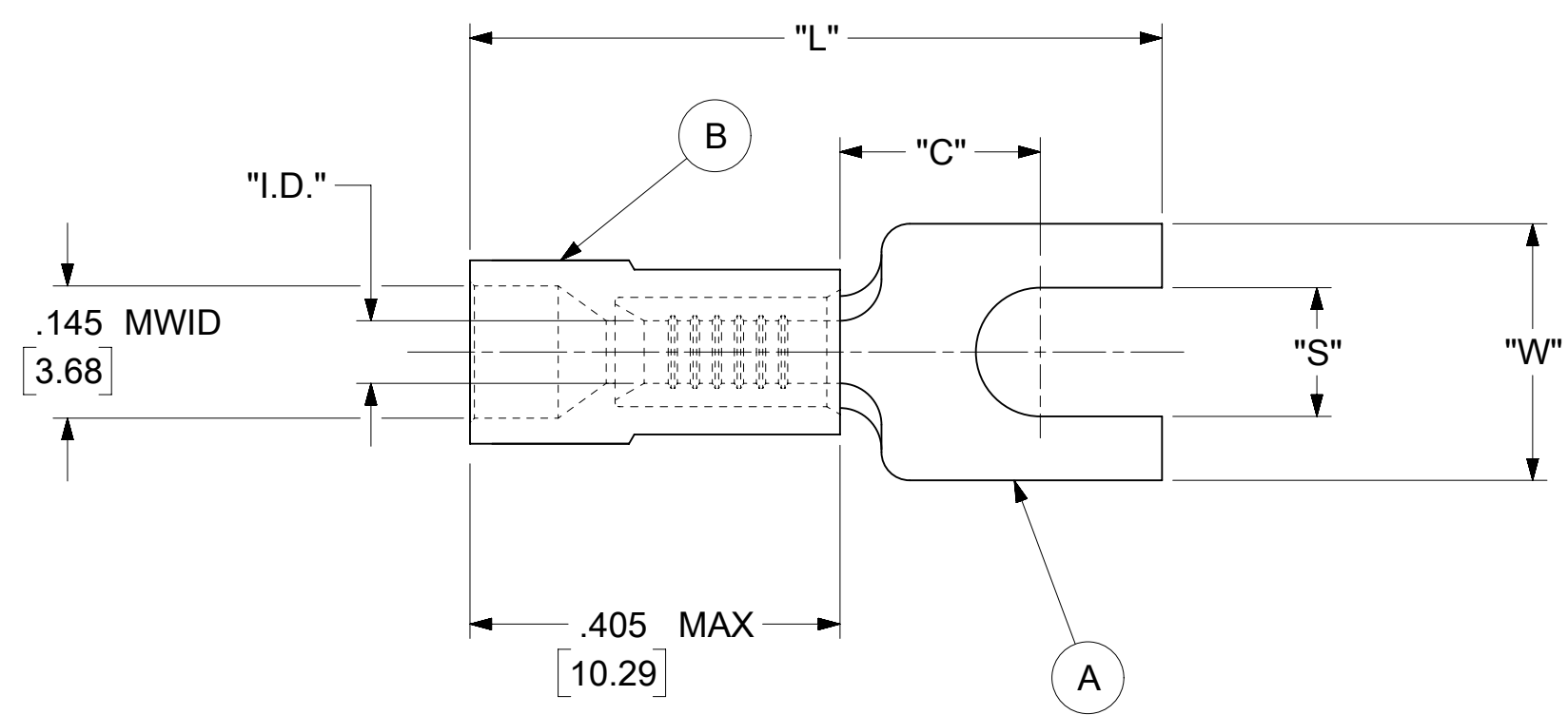


LOOSE PIECE		TAPE MOUNTED		SPECIFICATIONS							
MATERIAL NUMBER	ENGINEERING NUMBER	MATERIAL NUMBER	ENGINEERING NUMBER	STUD SIZE	"S" ±.005 [0.13]	"W" ±.010 [0.25]	"C" MIN.	"L" MAX.	"I.D." MIN.	"H"	STOCK THICKNESS
191310047	AA-2109-02X	191310046	AA-2109-02XT	2	.094 [2.39]	.187 [4.75]	.183 [4.65]	.727 [18.47]	.054 [1.37]	.980 [24.89]	.031±.001 [0.79]
191310045	AA-2109-04X	191310044	AA-2109-04XT	4	.119 [3.02]						
191310042	AA-2118-06X	191310041	AA-2118-06XT	6	.146 [3.71]	.250 [6.35]	.320 [8.13]	.895 [22.73]	.062 [1.57]	.980 [24.89]	.028 $\frac{+.000}{-.002}$ [0.71]



PARTS ON TAPE

NOTES:

- MATERIAL:
  - (A). TERMINAL: COPPER  
PLATING: ELECTRO-TIN (.0003 MIN.)
  - (B). INSULATION: MOLDED PVC (RED)
- MWID: MAXIMUM WIRE INSULATION DIAMETER
- WIRE SIZE: 22 -18 AWG  
0.25 -1.5 MM<sup>2</sup>
- "UL" LISTING #E32244  
"CSA" LISTING #18689
- ALL DIMENSIONS IN INCHES/[MM].
- PARTS ARE ROHS COMPLIANT.
- DIMS. SHOWN ARE FOR REFERENCE ONLY.

<b>SYMBOLS</b> THIS DRAWING CONTAINS INFORMATION THAT IS PROPRIETARY TO MOLEX ELECTRONIC TECHNOLOGIES, LLC AND SHOULD NOT BE USED WITHOUT WRITTEN PERMISSION DIMENSION UNITS: INCH/MM SCALE: NTS GENERAL TOLERANCES (UNLESS SPECIFIED): 4 PLACES ± --- ± --- 3 PLACES ± --- ± .005 2 PLACES ± 0.13 ± .01 1 PLACE ± 0.25 ± --- 0 PLACES ± --- ± --- ANGULAR TOL ± 0.5° DRAFT WHERE APPLICABLE MUST REMAIN WITHIN DIMENSIONS THIRD ANGLE PROJECTION DRAWING: C-SIZE SERIES: 19131	CURRENT REV DESC:			
	EC NO: 625846			SPADE TONGUE TERMINAL INSULKRIMP 200-SERIES PRODUCT CUSTOMER DRAWING
	DRWN: ABENJAMINLW 2019/09/04			
	CHK'D: GROJAS01 2019/10/17			
APPR: JMACNEIL 2019/10/18		INITIAL REVISION:	DOCUMENT NUMBER: AACD20302	
APPR: JJ 1984/11/02		DRWN: JJ 1984/11/02	DOC TYPE: PSD	
MATERIAL NUMBER: SEE TABLE		CUSTOMER: GENERAL MARKET	DOC PART: 001	
SHEET NUMBER: 1 OF 1		REVISION: A		