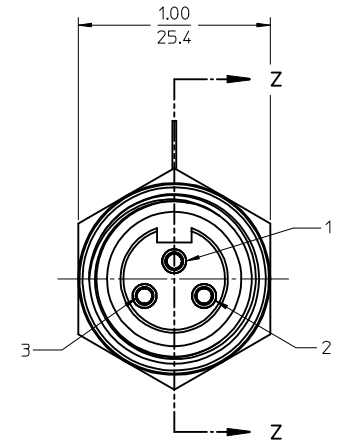
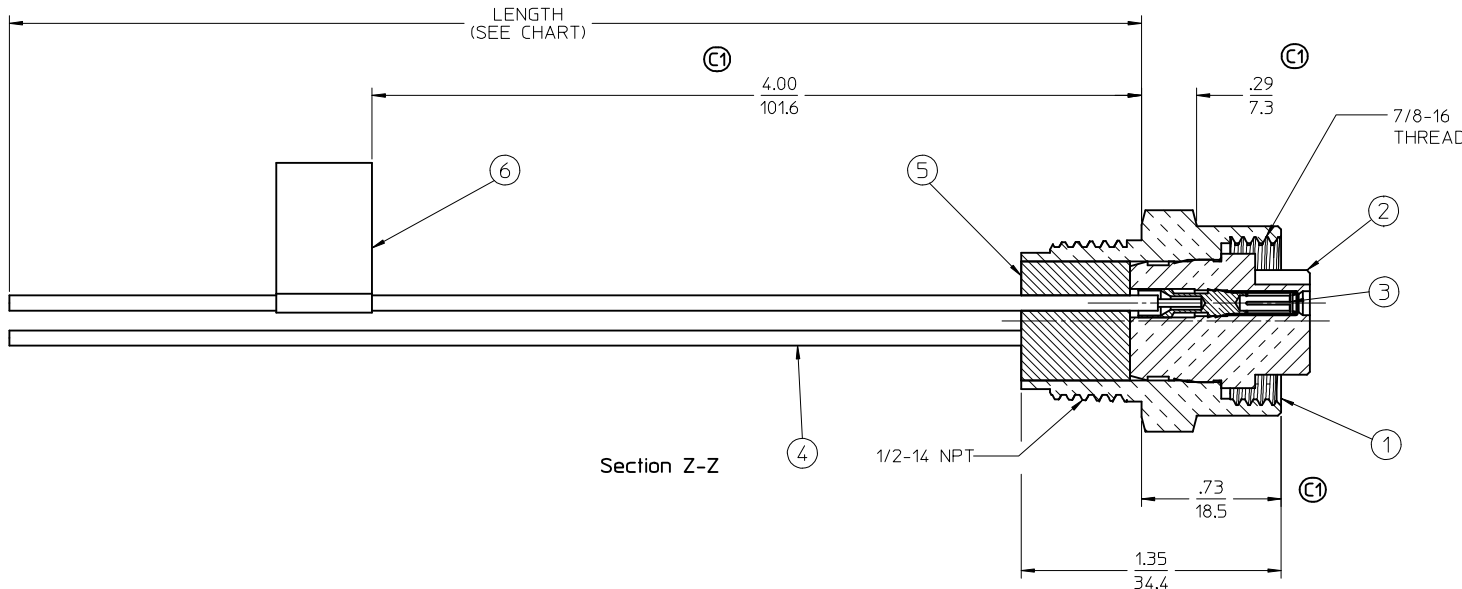
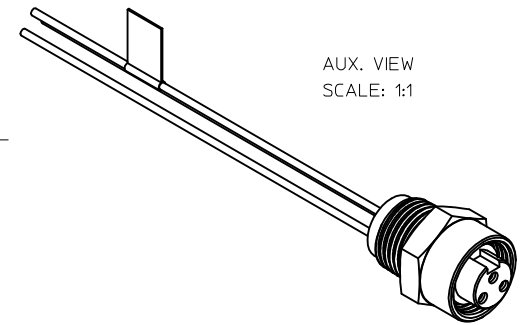
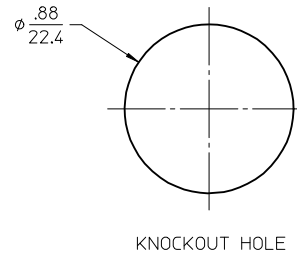


MATERIAL NO.	ENGINEERING NO.	LENGTH
1300130110	1R3000A20M005	0.5M
1300130111	1R3000A20M010	1.0M
1300130112	1R3000A20M020	2.0M

Ⓢ PART NO. LEGEND
1R3000A20M005

WIRE TYPE: 16 AWG PVC
FINISHED LENGTH
M005= 0.5 METER
M010= 1 METER
M100= 10 METERS



- NOTES:
- MATERIAL: AS NOTED
 - FINISHES: AS NOTED
 - ELECTRICAL SPECIFICATIONS
VOLTAGE RATING: 500V PER IEC60664 Ⓢ
600V PER UL2237
CURRENT RATING: 13 AMPS
 - PROTECTION: IP67 (WHEN MATED)
 - TEMP RANGE: -20°C TO +105°C
 - AGENCY LISTING: UL LISTED, FILE NO: E258922
 - DIMS SHOWN ARE FOR REFERENCE UNLESS NOTED OTHERWISE

COLOR	NUMBER
GREEN/YELLOW	1
BLACK	2
WHITE	3

WIRE DIAGRAM

Ⓢ

CABLE LENGTH TOLERANCES
>.3M [1FT]: +19mm-0 [+75in-0]
.3 - .9M [1 - 3FT]: +44.5mm-0 [+1.75in-0]
.9 - 1.8M [3 - 6FT]: +55.6mm-0 [+2.19in-0]
1.8 - 3.7M [6 - 12FT]: +88.9mm-0 [+3.50in-0]
3.7 - 7.3M [12 - 24FT]: +165.1mm-0 [+6.50in-0]
7.3-14.6M [24 - 48FT]: +317.5mm-0 [+12.50in-0]
14.6 - 30.5M [48-100FT]: +622.3mm-0 [+24.50in-0]
OVER 30M [100FT] +2% OF FINISHED LENGTH

ITEM	DESCRIPTION	MATERIAL	FINISH
6	LABEL	VINYL	BLACK/YELLOW
5	POTTING MATERIAL	EPOXY	
4	WIRE, 16 AWG	PVC INSULATION	SEE WIRE DIAGRAM
3	CONTACT SOCKET & SLEEVE ASSY.	Cu ALLOY/ST.STEEL	GOLD PLATED
2	INSERT	PVC	YELLOW
1	RECEPTACLE SHELL	ZINC DIECAST	NICKEL PLATED

IEC VOLTS WAS 400, WAS 6.0 ADD TEMP RANGE: UL FILE EC NO: IFC2017-0940 DRWRN:STONE 2017/04/04 CHKD: APPR:BMWOODMAN 2017/06/06	QUALITY SYMBOLS
	▼=0 ▽=0

GENERAL TOLERANCES (UNLESS SPECIFIED)	
mm	INCH
4 PLACES ± .---	± .---
3 PLACES ± .---	± .005
2 PLACES ± 0.13	± .01
1 PLACE ± 0.3	± .020
ANGULAR ±1/2°	

DRAFT WHERE APPLICABLE MUST REMAIN WITHIN DIMENSIONS

DIMENSION STYLE	
IN/MM	
DRAWN BY	DATE
R.STONE	2009/08/25
CHECKED BY	DATE
B.WOODMAN	2009/08/27
APPROVED BY	DATE
JFMURPHY	2009/08/26
MATERIAL NO.	
-	

SCALE	DESIGN UNITS	THIRD ANGLE PROJECTION
2:1	INCH	Ⓢ
TITLE		
MINI-CHANGE, RECEPTACLE 3P, FEMALE, 16 AWG		
MOLEX INCORPORATED		SHEET NO.
DOCUMENT NO. SD-130013-085		1 OF 1
THIS DRAWING CONTAINS INFORMATION THAT IS PROPRIETARY TO MOLEX INCORPORATED AND SHOULD NOT BE USED WITHOUT WRITTEN PERMISSION		