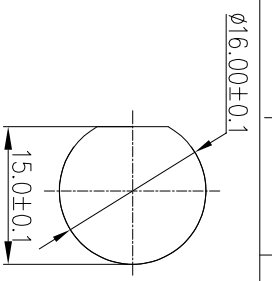
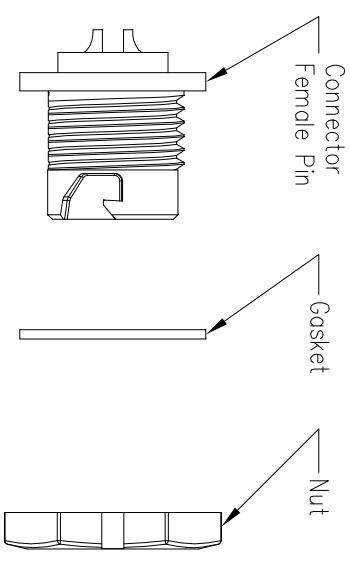
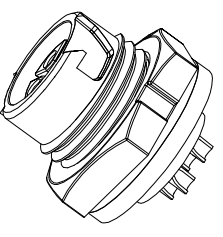
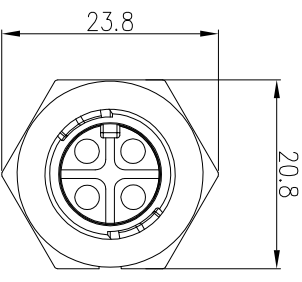
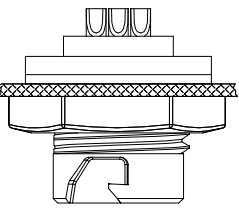
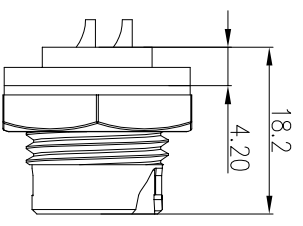


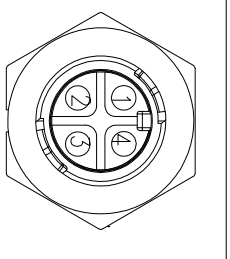
| REV. | EN. NO. | DESCRIPTION | SIGN | DATE |
|------|---------|-----------------|------|------------|
| C1 | N/A | INITIAL DRAWING | Liu | 2019/08/13 |



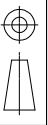
Recommended Panel Cut-Out



22XXXX635-01
Pin Number



4 Pin
P/N: 22004635-01
Pin Assignments
Front View



UNIT: mm

| TOLERANCE | ±0.25 |
|-----------|-------|
| .X | ±0.15 |
| .XX | ±0.05 |
| .XXX | ±1' |
| ANGLES | |

DESCRIPTION

Standard Series Push Lock
Front Mount With Female Pin

| SCALE | 1:1 | SHEET | 1 | OF | 1 |
|-------|-----|-------|----|---------------------|---|
| REV | C1 | SIZE | A4 | * : Inspection Item | |

CHOGORI

- Specification:
1. Operation Temperature: -45°C~105°C.
 2. Insulation Resistance: 100MΩ at DC500V.
 3. Contact Resistance: $\leq 10m\Omega$
 4. Withstand Voltage: 1500V AC
 5. Operating Current: 10A
 6. Operating Voltage: AC 125V
 7. Waterproof Rate: IP67 (Mated)
 8. Housing: Nylon, Black
 9. Female Pin: Copper Alloy, Gold Plated
 10. Gasket: Silicon Gray
 11. Panel Nut: Nylon, Blue
 12. Torque Rate: 0.8~1.0N • m
 13. RoHS Compliant.
 14. UL Compliant.
 15. Mating Cap P/N: 806-00053-01

| PART NO | 22XXXX635-01 | DRAWN BY | Liu | DATE | 2019/08/13 |
|----------|--------------|-------------|--------|------|------------|
| DWG NO | | CHECKED BY | Mo | DATE | 2019/08/13 |
| CUSTOMER | | APPROVED BY | Ponson | DATE | 2019/08/13 |