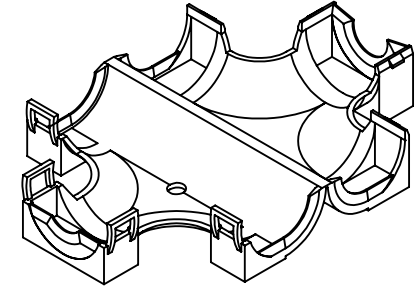
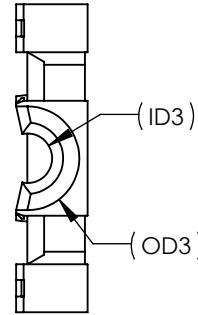
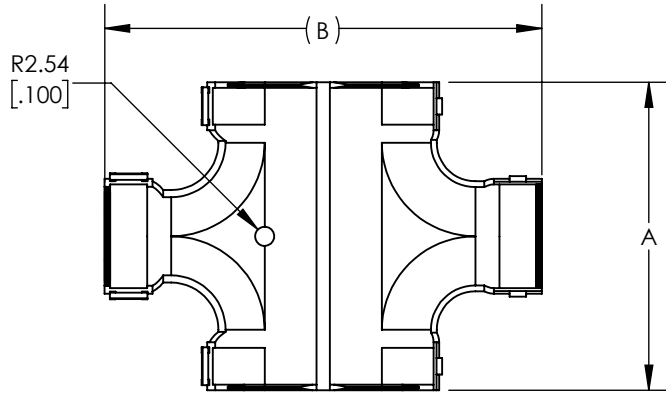
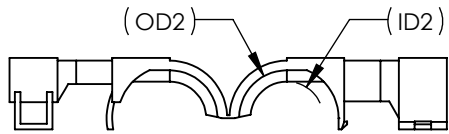
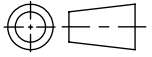
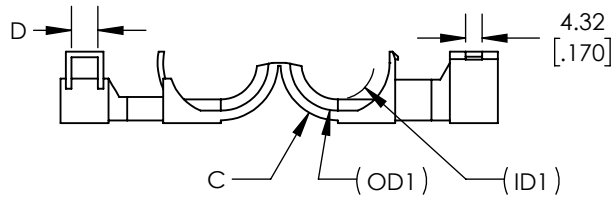


SW



ISOMETRIC VIEW



Revision level			Revision Record	Changed	Date	Approved	Date
Drawing	State	Part					
01.1	Design Release	-	SEE ECN# 014605	CTF	08/23/2018	KAC	08/23/2018

GLOBAL PART DESCRIPTION	GLOBAL PROJECT NUMBER	TYPE	SUPERCEDES DCS PART NUMBER	FOR CONDUIT ID	CONDUIT DIAMETER						DIM "A"	(DIM "B")	DIM "C"	DIM "D"
					(OD1)	(ID1)	(OD2)	(ID2)	(OD3)	(ID3)				
CTHC-T737-PP-BK	18-2007	CTHC-T737	08917321	8.89 & 19.05 [.350 & .750]	25.1 [0.99]	19.3 [0.76]	25.1 [0.99]	19.3 [0.76]	13.4 [0.57]	9.7 [0.38]	80.72 - 82.25 [3.178 - 3.238]	115.67 [4.554]	R 15.2 [0.60]	7.1 [.28]
CTHC-T555-PP-BK	18-2008	CTHC-T555	08917624	12.52 [.493]	17.8 [0.70]	13.1 [0.52]	17.8 [0.70]	13.1 [0.52]	17.8 [0.70]	13.1 [0.52]	63.20 - 65.23 [2.488 - 2.568]	89.256 [3.514]	R 10.92 [0.430]	7.1 [.28]
CTHC-T757-PP-BK	18-2009	CTHC-T757	08911868	12.52 & 19.05 [.493 & .750]	25.1 [0.99]	19.3 [0.76]	25.1 [0.99]	19.3 [0.76]	17.8 [0.70]	13.1 [0.52]	80.72 - 82.25 [3.178 - 3.238]	115.67 [4.554]	R 15.2 [0.60]	7.1 [.28]
CTHC-T767-PP-BK	18-2010	CTHC-T767	12004449	15.88 & 19.05 [.625 & .750]	25.1 [0.99]	19.3 [0.76]	25.1 [0.99]	19.3 [0.76]	21.3 [0.84]	16.2 [0.64]	80.72 - 82.25 [3.178 - 3.238]	115.67 [4.554]	R 15.2 [0.60]	7.40 [.291]

Material
PP IM BLK PER DCS
M2097001

Units: millimeters

Dimension without tolerances details to:
 .xxx = ±.013
 .xx = ±.13
 .x = ±.3
 None = ±.8
 < = ±0.5°
 Dimension Formatted mm/[in]

The copyright of this drawing is reserved by HellermannTyton. It is issued on condition that it is not reproduced, copied, or disclosed to a third party, either wholly or in part, without the consent of HellermannTyton.

Drawn CTF 08/23/2018
 Approved KAC 08/23/2018

HellermannTyton
 North America
 Email: corp@htamericas.com
 Web: www.hellermann.tyton.com

Article/Type-No SEE CHART

Title **LOOM TUBING T FITTING**

Drawing-No PRODUCTION : Phase

18-2007-001-CSU

Scale 1:2

Project Number

PRP 18-2007

Format AH

Sheet 1/1